

DESIGN CONSULTANTS

GENERAL CONTRACTOR

ARCHITECT

TIMOTHY P. GIBBONS, AIA
ESI DESIGN SERVICES, INC.
950 WALNUT RIDGE DRIVE
HARTLAND, WI 53029
(262) 369-3535
(262) 369-3592 (FAX)
EMAIL : tgibbons@esigroupusa.com

STRUCTURAL ENGINEER

JOSEPH E. MOHA, PE
4th DIMENSION DESIGN, INC.
817 VENTURE CT.
WAUKESHA, WI 53189
(262) 896-6500
(262) 896-6505 (FAX)
EMAIL: joe.moha@4dd.com

PLUMBING ENGINEER

JONATHAN R. OLSON, P.E.
ESI DESIGN SERVICES, INC.
950 WALNUT RIDGE DRIVE
HARTLAND, WI 53029
(262) 369-3535
(262) 369-3592 (FAX)
EMAIL: jolson@esigroupusa.com

HVAC ENGINEER

JONATHAN R. OLSON, P.E.
ESI DESIGN SERVICES, INC.
950 WALNUT RIDGE DRIVE
HARTLAND, WI 53029
(262) 369-3535
(262) 369-3592 (FAX)
EMAIL: jolson@esigroupusa.com

ELECTRICAL ENGINEER

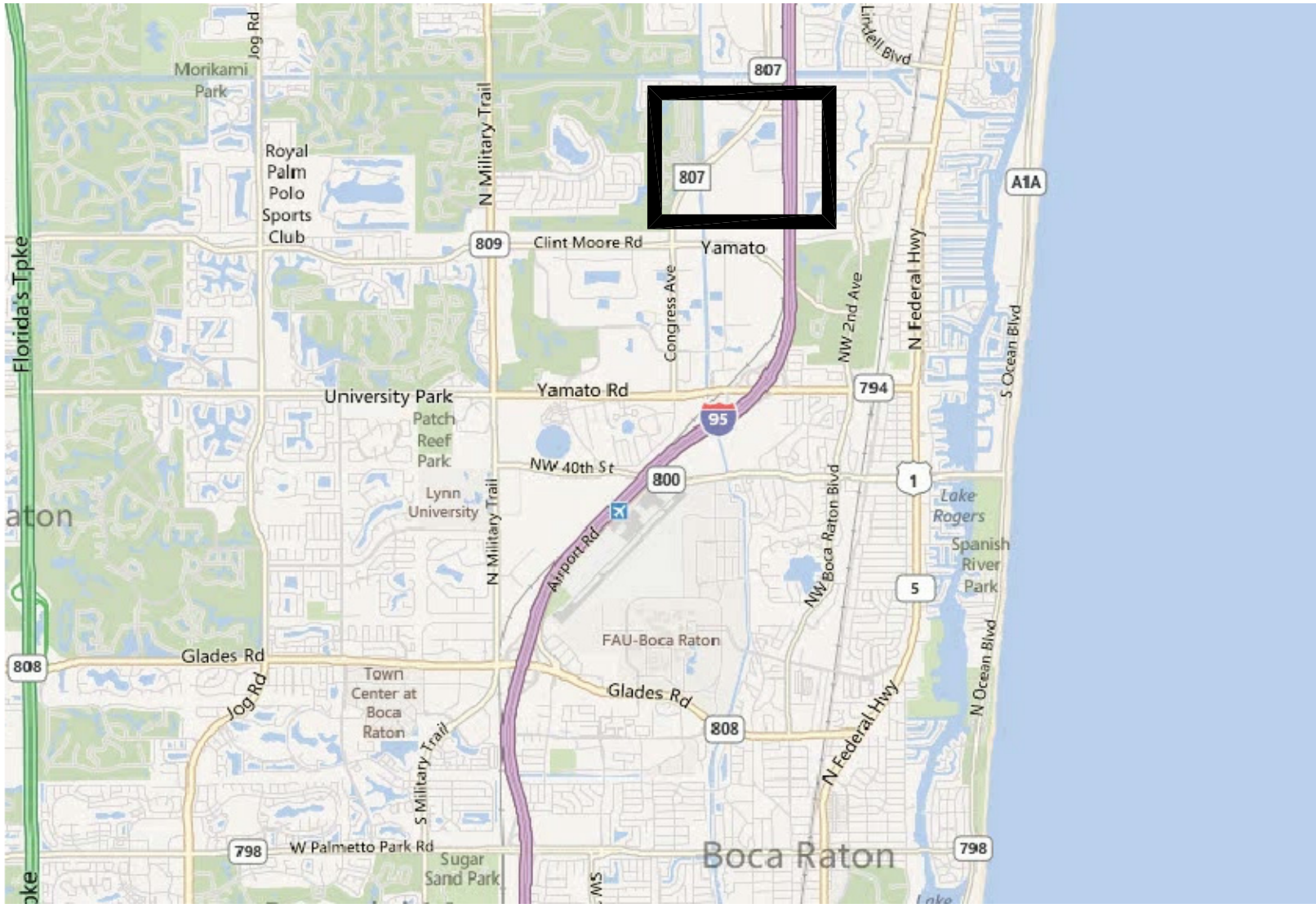
TIMOTHY J. MILLER, P.E.
ESI DESIGN SERVICES, INC.
950 WALNUT RIDGE DRIVE
HARTLAND, WI 53029
(262) 369-3535
(262) 369-3592 (FAX)
EMAIL: tmiller@esigroupusa.com



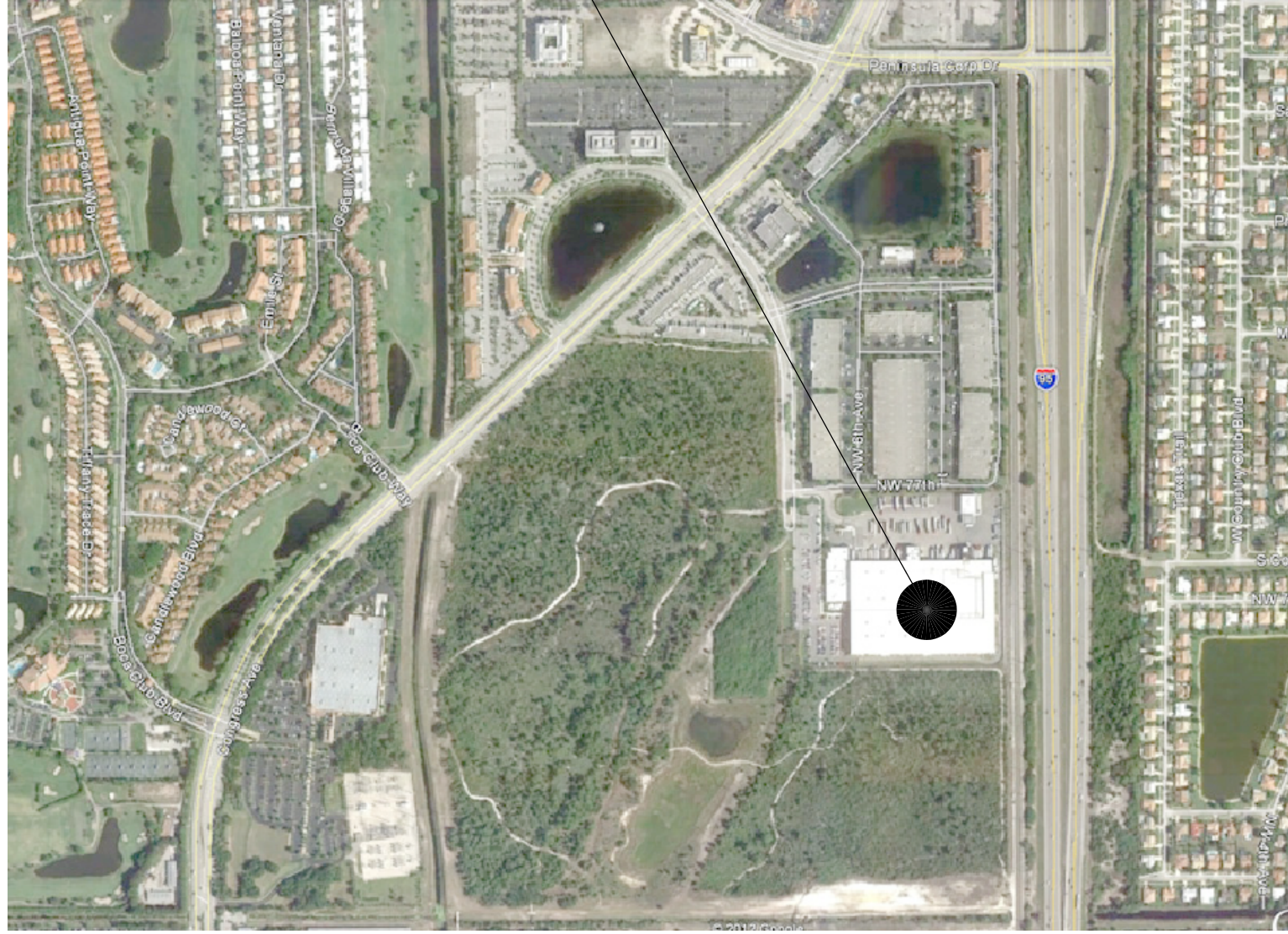
Kitchens

KITCHEN RENOVATION FOR
US FOODS, INC.
SOUTH FLORIDA DIVISION

LOCATION:



US FOODS



7598 NW 6TH AVENUE
BOCA RATON, FL 33487

PROJECT INFORMATION

PROJECT DESCRIPTION

The project consists of remodel of the existing product demonstration kitchen and training rooms, as well as remodel of a portion of the existing office to be converted into more training rooms, a kitchen prep area, pantry, and storage.

CONSTRUCTION TO BE IN ACCORDANCE
WITH THE FOLLOWING CODES:

BUILDING: 2017 FLORIDA BUILDING CODE
PLUMBING: 2017 FLORIDA PLUMBING CODE
MECHANICAL: 2017 FLORIDA MECHANICAL CODE
ELECTRICAL: 2014 NATIONAL ELECTRICAL CODE (NFPA 70)

OCCUPANCY CLASSIFICATION

Main Occupancy (Section 302.1): Low-Hazard Storage Group S-2 (Section 311.3)
Accessory Occupancies (Section 508.2): Business Group B (section 304.1)
Assembly Group A-3 (section 303.1)

TYPE OF CONSTRUCTION

TYPE 2B, NON-COMBUSTIBLE (Section 602.2)

FIRE PROTECTION

The entire facility has an existing fully automatic sprinkler system. (Chapter 9)

FACILITY DATA:

NUMBER OF STORIES

One Story with Mezzanines (Section 505)

BUILDING AREA

Existing Building : 337,405 S.F.

Renovation Area : 5,940 S.F.

Locker Room Renovation -Alternate #1: 656 S.F.

Allowable Area : Unlimited (Sec. 507)

BUILDING HEIGHT

Existing Building Height : 40'-0"

Allowable Building Height : 75' (Sec. 504.2 and Table 503)
(MUNICIPALITY HEIGHT RESTRICTION IS 40'-0")

CIVIL

ARCHITECTURAL

STRUCTURAL

PLUMBING

MECHANICAL

FIRE PROTECTION

ELECTRICAL

A001 ABBREVIATIONS AND SYMBOLS
A002 PARTIAL FLOOR PLAN - LIFE SAFETY
A010 ARCHITECTURAL SITE PLAN
A100 OVERALL FLOOR PLAN
A101 EXISTING/DEMO PLANS
A201 ENLARGE FLOOR PLAN
A221 REFLECTED CEILING/FLOOR FINISH PLAN
A222 ENLARGED PLANS FOR PROD. EVAL. & DETL.
A231 PARTIAL ROOF PLAN
A501 ARCHITECTURAL DETAILS
A502 ARCHITECTURAL DETAILS
A503 ARCHITECTURAL DETAILS
A701 INTERIOR ELEVATIONS
A702 INTERIOR ELEVATIONS
A703 INTERIOR ELEVATIONS
A801 ROOM FINISHES AND DOOR SCHEDULES
A901 EQUIPMENT PLAN

S101 FRAMING PLAN AND DETAILS
S102 JOIST REINFORCEMENT

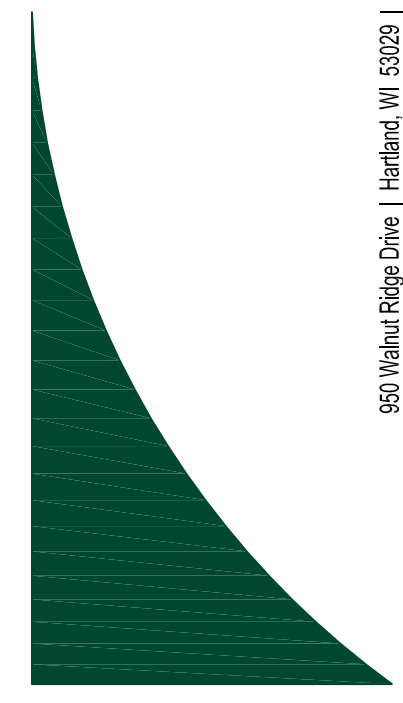
P001 ABBREVIATIONS, SYMBOLS, AND NOTES
P101 PLUMBING DEMOLITION FLOOR PLANS
P201 ENLARGED DRAIN, WASTE, & VENT PLAN
P202 ENLARGED DOMESTIC WATER PLAN
P301 DWV AND DOMESTIC WATER ISOMETRICS
P501 DETAILS
P801 SCHEDULES

H001 ABBREVIATIONS, SYMBOLS, AND NOTES
H101 HVAC DEMOLITION FLOOR PLAN
H201 ENLARGED HVAC FLOOR PLAN
H202 HVAC PIPING PLANS
H501 DETAILS
H801 SCHEDULES

SEE SPECIFICATIONS FOR REQUIREMENTS
PER SHEET A201

E001 ELECTRICAL SYMBOLS & NOTES
E101 DEMOLITION PLAN
E102 DEMOLITION PLAN
E201 LIGHTING FLOOR PLAN
E211 POWER & SYSTEMS FLOOR PLAN
E301 PANEL SCHEDULES
E801 ELECTRICAL SCHEDULES
E802 ELECTRICAL SCHEDULES

ESI
ARCHITECTURAL &
ENGINEERING
SERVICES INC.



KITCHEN RENOVATION FOR
US FOODS - SOUTH FLORIDA
7598 NW 6TH AVENUE
BOCA RATON, FL 33487

REVISIONS	
Δ	2/17/20 - ADDENDUM #1
Δ	-
Δ	-
Δ	-
Δ	-
Δ	-
Δ	-
Δ	-
Δ	-

DATE	JOB NO.
1-6-20	50-1414-19
DWG. BY	CHKD. BY
MAS	TPC

SHEET TITLE
TITLE SHEET

PRELIMINARY DWGS. |
FINAL CONST. DWGS. |

SHEET NUMBER

T001

TITLE