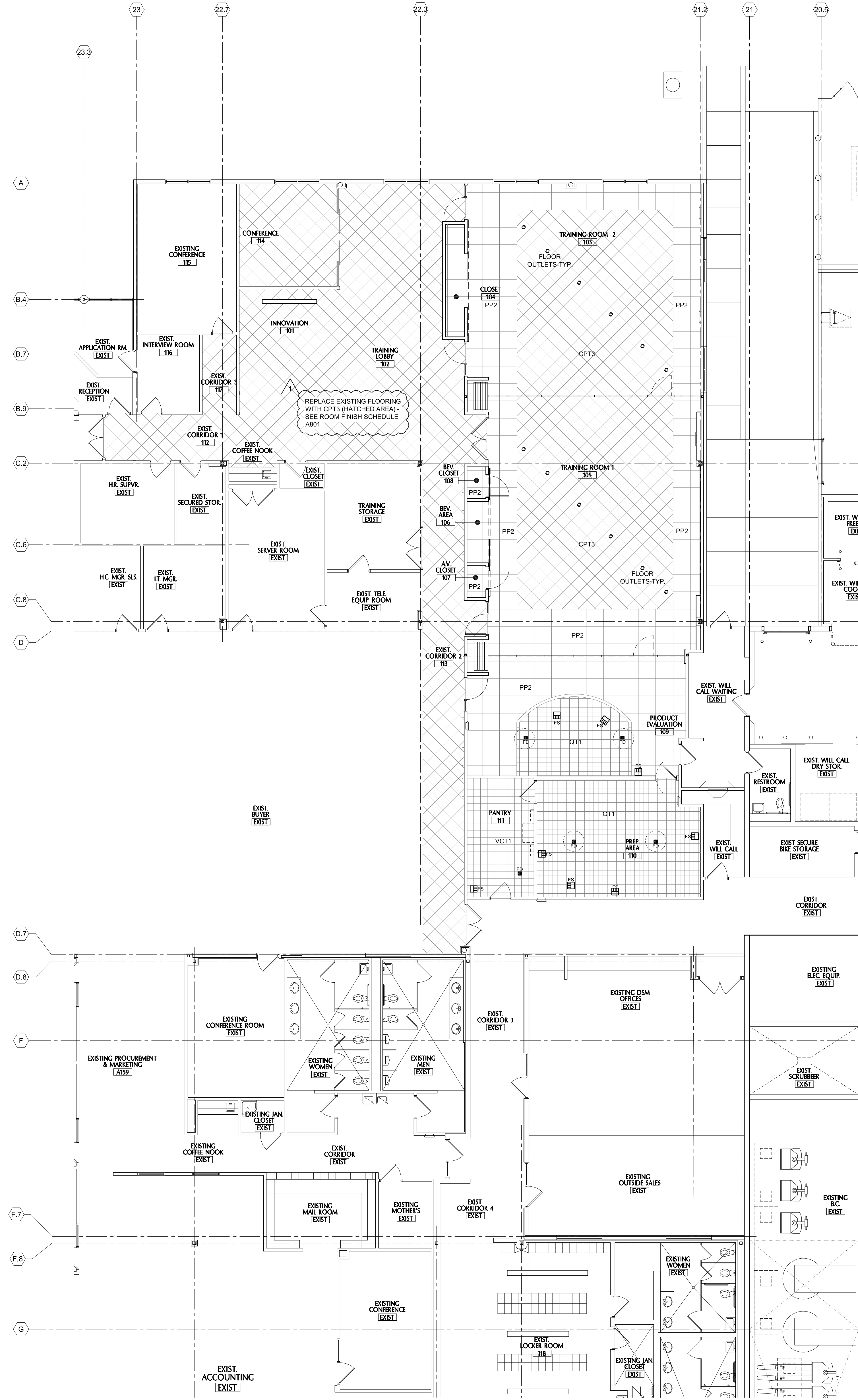


REFLECTED CEILING PLAN

1/8" = 1'-0"

NOTE: CONTRACTOR TO FIELD VERIFY THAT THE EXISTING CEILING CAN BE RAISED FROM 9'-0" TO 10'-0" IN THE FOLLOWING ROOMS: 101, 102, 103, 104 AND 114.



FLOOR FINISH PLAN

1/8" = 1'-0"

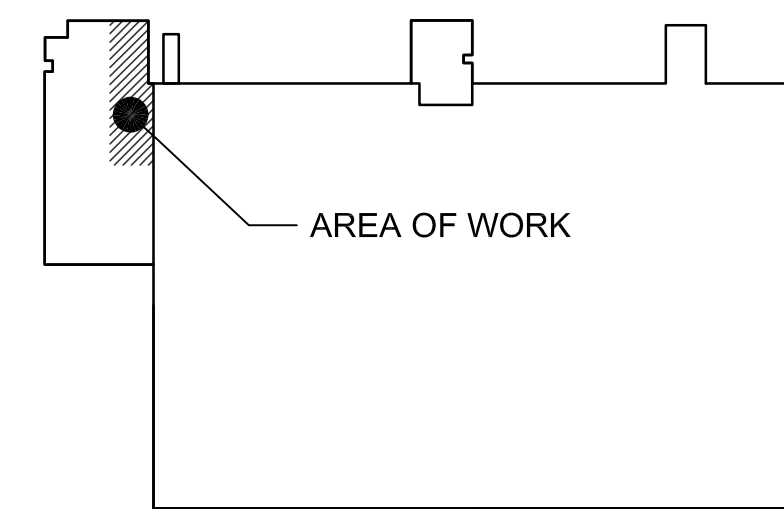
CEILING LEGEND

- 2' X 2' FLUORESCENT LIGHT FIXTURE
- FLUORESCENT LIGHT FIXTURE
- RECESSED DOWNLIGHT FIXTURE
- EXISTING LIGHT FIXTURES
- EXISTING LIGHT FIXTURES
- EXISTING LIGHT FIXTURES
- SUPPLY AIR DIFFUSER
- SUPPLY AIR DIFFUSER
- RETURN AIR GRILLE
- EXHAUST GRILLE
- EXISTING MECHANICAL (SUPPLY/RETURN)
- EXIT LIGHT - CEILING MOUNTED
- OR
- CEILING GRID
- EXISTING CEILING GRID
- DRYWALL (EXIST. SHOWN AS BLANK)
- SPRINKLER HEAD

*SEE ROOM FINISH SCHEDULE A801 FOR LOCATION, AND TYPE OF CEILINGS. HEIGHT IS ON A801 UNLESS NOTED OTHERWISE ON PLANS

GENERAL NOTES

- 1.) LIGHTS, SUPPLY, EXHAUST AND ANY OTHER M.E.P. ITEMS ARE LAYED OUT FOR COORDINATION. SEE MECHANICAL, PLUMBING, ELECTRICAL, AND FIRE FOR FURTHER INFORMATION.
- 2.) REFER TO MECHANICAL, PLUMBING, ELECTRICAL, AND FIRE PROTECTION DRAWINGS FOR ADDITIONAL INFORMATION.



KEY PLAN

N.T.S.

REVISIONS	
2/7/20	ADDENDUM #1
1	
2	
3	
4	
5	
6	
7	
8	
9	
10	

DATE	JOB NO.
1-6-20	50-1414-19
DWG. BY	CHKD. BY
MAS	TPC

SHEET TITLE
REFLECTED
CEILING /
FLOOR FINISH
PLANS

PRELIMINARY DWGS.
FINAL CONST. DWGS.

SHEET NUMBER

A221

ARCHITECTURAL