

# ROOM FINISH SCHEDULE

| ROOMS    |                         | FINISHES   |           |      |         |       |       |       |          |              |                |            |         |              | REMARKS  |
|----------|-------------------------|------------|-----------|------|---------|-------|-------|-------|----------|--------------|----------------|------------|---------|--------------|--|
| ROOM NO. | ROOM NAME               | FLOOR      | BASE      |      | WALLS   |       |       |       | CEILING  |              | ARCH. WOODWORK |            |         | WINDOW BINDS |  |
|          |                         |            | MATERIALS | CURB | NORTH   | EAST  | SOUTH | WEST  | TYPE     | HEIGHT       | TRIM           | BASE/UPPR. | COUNTER |              |  |
| AREA 'A' |                         |            |           |      |         |       |       |       |          |              |                |            |         |              |  |
| 101      | INNOVATION              | CPT3       | RB1       | -    | PT1/PT5 | -     | -     | PT1   | ACT1/GWB | 10'-0"/8'-6" | -              | -          | -       | -            | REPLACE EXISTING CARPET WITH CPT3                                |
| 102      | TRAINING LOBBY          | CPT3       | RB1       | -    | PT6     | PT1   | -     | PT1   | ACT1     | 10'-0"       | -              | -          | -       | -            | REPLACE EXISTING CARPET WITH CPT3                                |
| 103      | TRAINING ROOM 2         | CPT3 / PP2 | PTB2      | -    | PT6     | PT1   | OPC2  | PT1   | ACT1/GWB | 10'-0"       | -              | -          | -       | SHD (4)      | -  |
| 104      | CLOSET                  | PP2        | PTB2      | -    | PT1     | PT1   | PT1   | PT1   | ACT1     | 10'-0"       | -              | -          | -       | -            | -  |
| 105      | TRAINING ROOM 1         | CPT3 / PP2 | PTB2      | -    | OPC2    | PT1   | OPC2  | PT1   | ACT1/GWB | 10'-0"       | -              | -          | -       | -            | -  |
| 106      | BEVERAGE AREA           | PP2        | PTB2      | -    | PT1     | -     | PT1   | VWC5  | GWB      | 9'-10"       | -              | WD-2       | SS-5    | -            | -  |
| 107      | AV CLOSET               | PP2        | PTB2      | -    | PT1     | PT1   | PT1   | PT1   | ACT1     | 9'-0"        | -              | -          | -       | -            | -  |
| 108      | BEVERAGE CLOSET         | PP2        | PTB2      | -    | PT1     | PT1   | PT1   | PT1   | ACT1     | 9'-0"        | -              | -          | -       | -            | -  |
| 109      | PRODUCT EVALUATION      | SEE A221   | -         | -    | OPC1    | PWT1  | PWT1  | PWT1  | ACT2/GWB | 9'-0"        | -              | WD-2       | SS-5    | -            | -  |
| 110      | PREP AREA               | QT1        | QTB1      | -    | PWT1    | PWT1  | PWT1  | PWT1  | ACT2     | 9'-0"        | -              | -          | -       | -            | -  |
| 111      | PANTRY                  | VCT1       | RB1       | -    | PT1     | PT1   | PT1   | PT1   | ACT2     | 9'-0"        | -              | -          | -       | -            | -  |
| 112      | EXISTING CORRIDOR 1     | CPT3       | RB1       | -    | PT1     | PT1   | PT1   | PT1   | EXIST    | 9'-0"        | -              | -          | -       | -            | REPLACE EXISTING TILE WITH CPT3                                  |
| 113      | EXISTING CORRIDOR 2     | CPT3       | RB1       | -    | PT1     | PT1   | PT1   | PT1   | EXIST    | 9'-0"        | -              | -          | -       | -            | REPLACE EXISTING TILE AND CARPET WITH CPT3                       |
| 114      | CONFERENCE              | CPT3       | RB1       | -    | PT6     | -     | PT1   | PT1   | ACT1     | 10'-0"       | -              | -          | -       | -            | REPLACE EXISTING CARPET WITH CPT3                                |
| 115      | EXISTING CONFERENCE     | EXIST      | EXIST     | -    | EXIST   | EXIST | EXIST | EXIST | ACT1     | 9'-0"        | -              | -          | -       | -            | REPLACE EXISTING CEILING TILE WITH ACT1                          |
| 116      | EXISTING INTERVIEW ROOM | EXIST      | EXIST     | -    | EXIST   | EXIST | EXIST | EXIST | ACT1     | 9'-0"        | -              | -          | -       | -            | REPLACE EXISTING CEILING TILE WITH ACT1                          |
| 117      | EXISTING CORRIDOR 3     | CPT3       | RB1       | -    | PT1     | PT1   | -     | PT1   | EXIST    | 9'-0"        | -              | -          | -       | -            | REPLACE EXISTING TILE WITH CPT3                                  |
| 118      | EXISTING LOCKER ROOM    | EXIST      | EXIST     | -    | EXIST   | EXIST | EXIST | EXIST | EXIST    | 9'-0"        | -              | -          | -       | -            | ALTERNATE BID: PAINT LOCKERS PT4 (GLOSS) AND BENCH PEDESTALS PT4 |
|          |                         |            |           |      |         |       |       |       |          |              |                |            |         |              |  |
|          |                         |            |           |      |         |       |       |       |          |              |                |            |         |              |  |
|          |                         |            |           |      |         |       |       |       |          |              |                |            |         |              |  |
|          |                         |            |           |      |         |       |       |       |          |              |                |            |         |              |  |
|          |                         |            |           |      |         |       |       |       |          |              |                |            |         |              |  |
|          |                         |            |           |      |         |       |       |       |          |              |                |            |         |              |  |
|          |                         |            |           |      |         |       |       |       |          |              |                |            |         |              |  |
|          |                         |            |           |      |         |       |       |       |          |              |                |            |         |              |  |
|          |                         |            |           |      |         |       |       |       |          |              |                |            |         |              |  |
|          |                         |            |           |      |         |       |       |       |          |              |                |            |         |              |  |
|          |                         |            |           |      |         |       |       |       |          |              |                |            |         |              |  |
|          |                         |            |           |      |         |       |       |       |          |              |                |            |         |              |  |
|          |                         |            |           |      |         |       |       |       |          |              |                |            |         |              |  |
|          |                         |            |           |      |         |       |       |       |          |              |                |            |         |              |  |
|          |                         |            |           |      |         |       |       |       |          |              |                |            |         |              |  |
|          |                         |            |           |      |         |       |       |       |          |              |                |            |         |              |  |
|          |                         |            |           |      |         |       |       |       |          |              |                |            |         |              |  |
|          |                         |            |           |      |         |       |       |       |          |              |                |            |         |              |  |
|          |                         |            |           |      |         |       |       |       |          |              |                |            |         |              |  |
|          |                         |            |           |      |         |       |       |       |          |              |                |            |         |              |  |
|          |                         |            |           |      |         |       |       |       |          |              |                |            |         |              |  |
|          |                         |            |           |      |         |       |       |       |          |              |                |            |         |              |  |
|          |                         |            |           |      |         |       |       |       |          |              |                |            |         |              |  |
|          |                         |            |           |      |         |       |       |       |          |              |                |            |         |              |  |
|          |                         |            |           |      |         |       |       |       |          |              |                |            |         |              |  |
|          |                         |            |           |      |         |       |       |       |          |              |                |            |         |              |  |
|          |                         |            |           |      |         |       |       |       |          |              |                |            |         |              |  |
|          |                         |            |           |      |         |       |       |       |          |              |                |            |         |              |  |
|          |                         |            |           |      |         |       |       |       |          |              |                |            |         |              |  |
|          |                         |            |           |      |         |       |       |       |          |              |                |            |         |              |  |
|          |                         |            |           |      |         |       |       |       |          |              |                |            |         |              |  |
|          |                         |            |           |      |         |       |       |       |          |              |                |            |         |              |  |
|          |                         |            |           |      |         |       |       |       |          |              |                |            |         |              |  |
|          |                         |            |           |      |         |       |       |       |          |              |                |            |         |              |  |
|          |                         |            |           |      |         |       |       |       |          |              |                |            |         |              |  |
|          |                         |            |           |      |         |       |       |       |          |              |                |            |         |              |  |
|          |                         |            |           |      |         |       |       |       |          |              |                |            |         |              |  |
|          |                         |            |           |      |         |       |       |       |          |              |                |            |         |              |  |
|          |                         |            |           |      |         |       |       |       |          |              |                |            |         |              |  |
|          |                         |            |           |      |         |       |       |       |          |              |                |            |         |              |  |
|          |                         |            |           |      |         |       |       |       |          |              |                |            |         |              |  |
|          |                         |            |           |      |         |       |       |       |          |              |                |            |         |              |  |
|          |                         |            |           |      |         |       |       |       |          |              |                |            |         |              |  |
|          |                         |            |           |      |         |       |       |       |          |              |                |            |         |              |  |
|          |                         |            |           |      |         |       |       |       |          |              |                |            |         |              |  |
|          |                         |            |           |      |         |       |       |       |          |              |                |            |         |              |  |
|          |                         |            |           |      |         |       |       |       |          |              |                |            |         |              |  |
|          |                         |            |           |      |         |       |       |       |          |              |                |            |         |              |  |
|          |                         |            |           |      |         |       |       |       |          |              |                |            |         |              |  |
|          |                         |            |           |      |         |       |       |       |          |              |                |            |         |              |  |
|          |                         |            |           |      |         |       |       |       |          |              |                |            |         |              |  |
|          |                         |            |           |      |         |       |       |       |          |              |                |            |         |              |  |
|          |                         |            |           |      |         |       |       |       |          |              |                |            |         |              |  |
|          |                         |            |           |      |         |       |       |       |          |              |                |            |         |              |  |
|          |                         |            |           |      |         |       |       |       |          |              |                |            |         |              |  |

## FLOOR

CPT1 9' X 36" CARPET TILE - COLOR 1: SHAW/STIPPLE SLATE 13585; ST116 9'X36"  
 CPT2 18" X 36" CARPET TILE - COLOR 2: SHAW/DRIFT RECHARGE 38530; ST142  
 CPT3 CARPET TILE - COLOR 3: FORBO; STYLE/ #: FLOTEX INTEGRITY; COLOR / #: GRANITE / 350012; INSTALL: 45°, QUARTER-TURN  
 QT1 8' X 8" QUARRY TILE - DALTILE; PATTERN: QUARRY TEXTURES; COLOR: 0703 ASHEN GRAY; GROUT: G2  
 PP2 PORCELAIN TILE DALTILE, PANORAMIC, CINDER RAIL, MATTE CM17, 31.5"X31.5"; GROUT: G7  
 VCT1 12" X 12" VINYL COMPOSITION TILE - ARMSTRONG; STYLE / #: STANDARD EXCELON; COLOR / #: EARTH GREEN / 51877

## BASE

RB1 RUBBER COVED BASE - 2 1/2" HIGH; JOHNSONITE; COLOR/ #: STEEL / 179  
 PTB1 PORCELAIN PAVER BASE - 3'X24" BATTISCOPA - VIRGINIA TILE; STYLE: MONOCIBEC-MODERN; COLOR: OLIVE MNCMODG 1224R  
 PTB2 12" X 24" PORCELAIN WALL TILE - DALTILE; STYLE / #: EVER; COLOR / #: EV05 EARTH; GROUT: G3; MORTAR: M1; GROUT RELEASE: GR1; SEALER: S1  
 QTB1 QUARRY TILE BASE - 6"X8" COVE BASE; DALTILE; STYLE: QUARRY TEXTURES / Q-3565; COLOR 0703 / ASHEN GRAY; GROUT: G2

## WALL

PT1 PAINT - ACRYLIC LATEX - BENJAMIN MOORE: WHITE DOVE OC-17; FINISH EGGSHELL  
 PT3 PAINT - DRY ERASE PAINT - IDEA PAINT PRO/WHITE  
 PT4 PAINT - ACRYLIC LATEX - SHERWIN WILLIAMS: GAUNLET GRAYEGGSHELL  
 PT5 PAINT - ACRYLIC LATEX - BENJAMIN MOORE: MATCH PANTONE 173C ORANGE  
 PT6 PAINT - ACRYLIC LATEX - BENJAMIN MOORE: MATCH PANTONE 576C GREEN  
 PT8 PAINT - ACRYLIC LATEX - SHERWIN WILLIAMS: SKYLINE STEEL SW 1015EGGSHELL  
 PT9 DRY ERASE PAINT - IDEA PAINT PRO/CLEAR  
 PT10 PAINT - ACRYLIC LATEX - SHERWIN WILLIAMS: COLOR: WHITE-SEMI GLOSS, PROVIDE BLOCK FILLER AT CMU WALLS-SEE SPECS  
 PT11 PAINT - ACRYLIC LATEX - BENJAMIN MOORE: ROCKPORT GRAY / HC-105; FINISH EGGSHELL  
 VWC1 TEXTILE WALLCOVERING: MAHARAM; TYPE & SIZE: POLYOLEFINNYLON 54" WIDE; STYLE / #: TEK-WALL INSET 099382; COLOR / #: TINSSEL / 001COLOR 1  
 VWC2 DRY ERASE WALLCOVERING: WALLTALKER; TYPE & SIZE: RY ERASE WLCV. 60" WIDE; STYLE / #: JUST-RIGHT; COLOR / #: JR60  
 VWC3 NOTE: INSTALL RUN TO CEILING WITH BOTTOM @ CHAIR RAIL  
 VWC4 VINYL WALLCOVERING: MAHARAM; TYPE & SIZE: VINYL 54" WIDE; STYLE / #: SLEEK / 3958040; COLOR / #: PHANTOM / 006  
 VWC5 VINYL WALLCOVERING: MAHARAM; TYPE & SIZE: POLYOLEFINNYLON 54" WIDE; STYLE / #: HONEYSUCKLE / 002  
 VWC6 CUSTOM VINYL WALLCOVERING - TAKEFORM; TYPE: AMP-US/TFIT-G4  
 PWT-1 PORCELAIN TILE: DALTILE, PANORAMIC, CINDER RAIL, MATTE CM17; 15 1/2" X 31" RUNNINGS BOND PATTERN  
 PWT-2 12" X 24" PORCELAIN WALL TILE - DALTILE; STYLE / #: EVER; COLOR / #: EV05 EARTH; GROUT: G3; MORTAR: M1; GROUT RELEASE: GR1; SEALER: S1  
 OPC1 OPERABLE PANEL COVERING (VINYL); HUFCOR (OR EQUAL); STYLE / #: CAIRN; COLOR / #: GRAY / 305; TRIM: GRAY  
 OPC2 OPERABLE PANEL COVERING (FABRIC); HUFCOR (OR EQUAL); STYLE / #: SILK ROAD; COLOR: STORM / 22-09; TRIM: GRAY  
 OPC3 OPERABLE PANEL COVERING (MARKER BOARD); HUFCOR (OR EQUAL); STYLE / #: K-PROSTEEL MARKERBOARD; COLOR / #: WHITE 938; TRIM: GRAY  
 CLF CHAIN LINK FENCE  
 GW1 GRAPHIC WALL - GRAPHIC OF01. WALL TO BE LEVEL 5 FINISH AND PRIMED. SEE FINISH PLAN FOR LOCATION.

## CEILING

ACT1 2X2 LAY-IN; ARMSTRONG; PATTERN: ULTIMA 1912 - 24" X 24" X 3/4"; BEVELED REGULAR 9/16" EDGE; COLOR: WHITE  
 ACT2 2X2 LAY-IN; USG; PATTERN: SHEETROCK VINYL COVERED GYPSUM - 24" X 24" X 1/2"; SO EDGE; COLOR: WHITE  
 GWB PAINTED GYPSUM WALLBOARD; COLOR: PAINT PT1 UN/O

## ARCH. WOODWORK

PL-1 PLASTIC LAMINATE: FORMICA, GRAPHITE, 837-58, MATTE  
 PL-2 PLASTIC LAMINATE: FORMICA, DOVER WHITE 7197-58, MATTE  
 PL-3 PLASTIC LAMINATE: FORMICA, FOLKSTONE 927-58, MATTE  
 PL-4 PLASTIC LAMINATE: FORMICA, CITADEL 1097-58, MATTE  
 PL-5 PLASTIC LAMINATE: APRA, SILKEN COFFEE 3309, GHILI FINISH  
 PL-6 PLASTIC LAMINATE: PIONITE, FINE OAK W0951, SUEDE  
 PL-8 PLASTIC LAMINATE: PIONITE, SLATE 52228, SUEDE  
 PL-9 PLASTIC LAMINATE: LAMINART, BRONZE 2402-T, TEXTURED FINISH  
 SS-1 SOLID SURFACE: DALTILE, QUARTZ, MORNING FROST N030, POLISHED  
 SS-2 SOLID SURFACE: CORIAN, QUARTZ, CASHMERE CARARRA  
 SS-3 SOLID SURFACE: SEEFFTE CORP. OKITE, WHITE AV00N4001  
 SS-4 SOLID SURFACE: CORIAN, GLACIER WHITE  
 SS-5 SOLID SURFACE: DIFINITI; TYPE: EVOKE PLUS (QUARTZ); COLOR / #: GRANITE  
 ST1 STONE, TERRAZZO & MARBLE SUPPLY COMPANIES; TYPE: GRANITE; COLOR: ABSOLUTE BLACK  
 WD WOOD - STAIN AND VARNISH COLOR: TBD  
 WD-01 WISCONSIN BENCH MANUFACTURING, HARD ROCK BUTCHER BLOCK, CLEAR POLY FINISH, 1 1/2" THICK  
 WD-02 QUARTER-SAWN WHITE OAK WOOD (VENGEER CLEAR)  
 WD-03 TERRAZZO, LOST COAST REDWOOD 7" PANELING, WEATHERED AND TINTED SPRING GREEN, 1/2" THICK X 7"  
 WD-04 WIDE X 2" - 5/8" RANDOM LENGTHS  
 TERRAZZO, DIRTY FACE 3" PANELING, SKIP PLANED WITH BLACK OIL, 1/2" THICK X 3" WIDE X 2" - 8" RANDOM LENGTHS

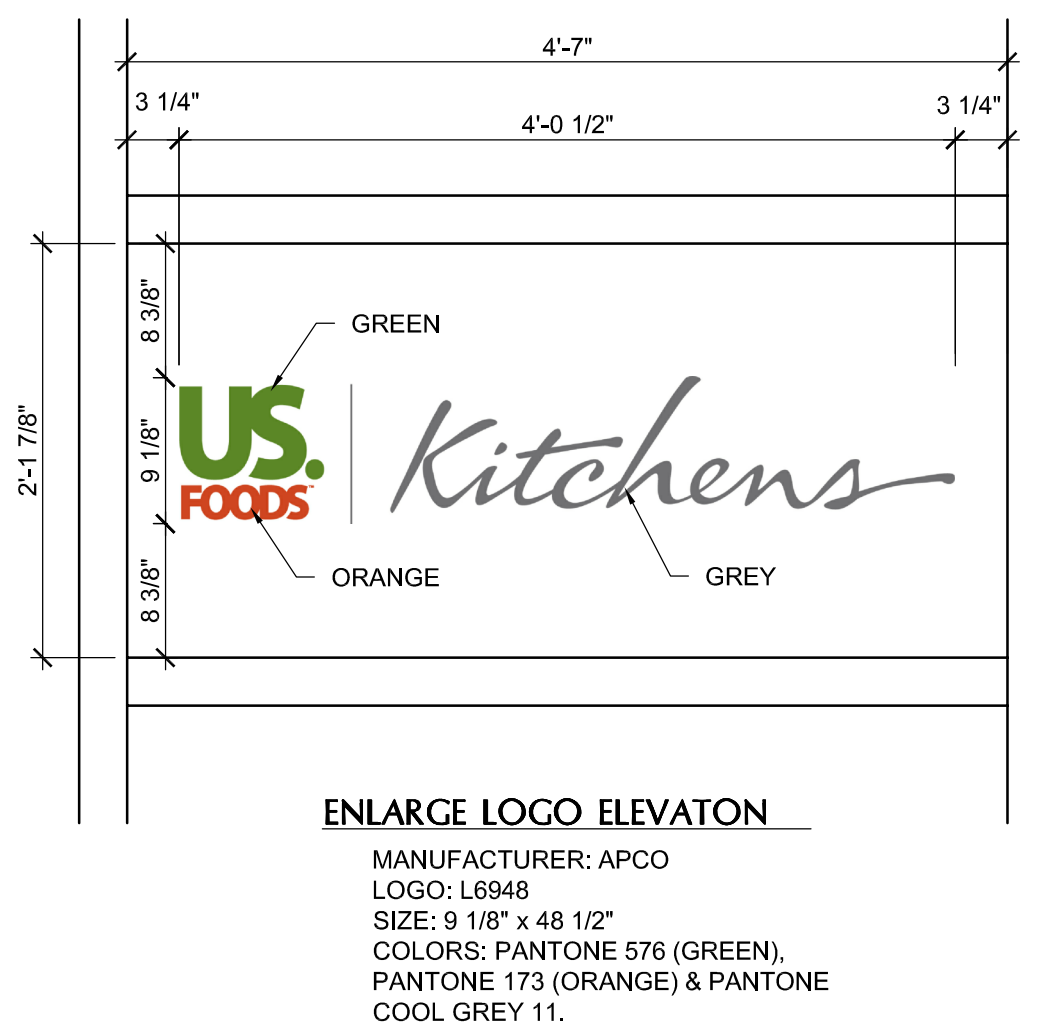
## WINDOW BLINDS

HLB HORIZONTAL LOUVER BLINDS: LEVOLOR; STYLE: RIVIERA 1" CLASSIC; COLOR / #: STAIN NICKEL / 00031  
 SHD ROLLER SHADE: DRAPER; STYLE: MANUAL FLEXSHADE W/FASCIA; OPERATION: BEAD CHAIN CLUTCH; FABRIC: TBD; COLOR: TBD

## GROUT

G1 GROUT: MAPEI; COLOR / #: SAHARA BEIGE / 11; SIZE: 1/8"  
 G2 GROUT: MAPEI; COLOR / #: CHARCOAL / 47; SIZE: 1/8"  
 G3 GROUT: MAPEI; COLOR / #: BAHAMA BEIGE / 04; SIZE: 1/8"  
 G4 GROUT: TEC; COLOR / #: BRIGHT WHITE #910; SIZE: 1/8"  
 G5 GROUT: MAPEI; COLOR / #: GRAY 09; SIZE: 1/8"  
 G6 GROUT: TEC; COLOR / #: LIGHT PEWTER #927; SIZE: 1/8"  
 G7 GROUT: MAPEI; COLOR / #: PEWTER / 2; SIZE: 1/8"

NOTE: ALL ABOVE FINISHES MAY OR MAY NOT BE USED - REFER TO SCHEDULE.



## 1 A801 LOGO FOR SLIDING DOOR

1" = 1'-0"

# STANDARD DOOR AND HARDWARE SCHEDULE

| DOOR     |      |     |        |                |        |           |           | FRAME |      |        |          |         |         | HARDWARE GROUP | FIRE RATED ASSEMBLY | NOTES  |
|----------|------|-----|--------|----------------|--------|-----------|-----------|-------|------|--------|----------|---------|---------|----------------|---------------------|--|
| DOOR NO. | TYPE | MAT | FINISH | NOMINAL SIZE   |        |           | GLAZING   | TYPE  | MATL | FINISH | SECTIONS |         |         |                |                     |  |
|          |      |     |        | WIDTH PER LEAF | HEIGHT | THICKNESS | SIZE/TYPE |       |      |        | HEAD     | JAMB    | MISC.   |                |                     |  |
| 103-1    | A    | SCW | S&V    | 3'-0"          | 7'-0"  | 1 3/4"    | -         | II    | HM   | P      | 2/A501   | 3/A501  | 4/A501  | 1              | -                   | DOOR AND FRAME FINISH TO MATCH EXISTING                |
| 103-2    | A    | SCW | S&V    | 3'-0"          | 7'-0"  | 1 3/4"    | -         | II    | HM   | P      | 2/A501   | 3/A501  | 4/A501  | 1              | -                   | DOOR AND FRAME FINISH TO MATCH EXISTING                |
| 104      | C    | AL  | AAL    | 10'-0"         | 10'-0" | PER MFR.  | SG        | III   | AL   | AAL    | 18/A501  | NA      | 18/A501 | PER MFR        | -                   | MFR. TO FIELD VERIFY REQUIRED SIZE OF DOOR PER OPENING |
| 105      | A    | SCW | S&V    | 3'-0"          | 7'-0"  | 1 3/4"    | -         | II    | HM   | P      | 2/A501   | 3/A501  | 4/A501  | 1              | -                   | DOOR AND FRAME FINISH TO MATCH EXISTING                |
| 106      | C    | AL  | AAL    | 4'-8"          | 10'-0" | PER MFR.  | SG        | III   | AL   | AAL    | 18/A501  | NA      | 18/A501 | PER MFR        | -                   | MFR. TO FIELD VERIFY REQUIRED SIZE OF DOOR PER OPENING |
| 107      | A    | SCW | S&V    | 3'-0"          | 7'-0"  | 1 3/4"    | -         | I     | HM   | P      | 2/A501   | 3/A501  | 4/A501  | 3              | -                   | DOOR AND FRAME FINISH TO MATCH EXISTING                |
| 108      | A    | SCW | S&V    | 3'-0"          | 7'-0"  | 1 3/4"    | -         | I     | HM   | P      | 2/A501   | 3/A501  | 4/A501  | 3              | -                   | DOOR AND FRAME FINISH TO MATCH EXISTING                |
| 109      | A    | SCW | S&V    | 3'-0"          | 7'-0"  | 1 3/4"    | -         | I     | HM   | P      | 2/A501   | 3/A501  | 4/A501  | 1              | -                   | DOOR AND FRAME FINISH TO MATCH EXISTING                |
| 110      | B    | SS  | F      | 3'-0"          | 7'-0"  | 1 3/4"    | SG        | I     | SS   | F      | 19/A501  | 20/A501 | 4/A501  | 2              | -                   | -  |
|          |      |     |        |                |        |           |           |       |      |        |          |         |         |                |                     |  |
|          |      |     |        |                |        |           |           |       |      |        |          |         |         |                |                     |  |
|          |      |     |        |                |        |           |           |       |      |        |          |         |         |                |                     |  |
|          |      |     |        |                |        |           |           |       |      |        |          |         |         |                |                     |  |
|          |      |     |        |                |        |           |           |       |      |        |          |         |         |                |                     |  |
|          |      |     |        |                |        |           |           |       |      |        |          |         |         |                |                     |  |
|          |      |     |        |                |        |           |           |       |      |        |          |         |         |                |                     |  |
|          |      |     |        |                |        |           |           |       |      |        |          |         |         |                |                     |  |
|          |      |     |        |                |        |           |           |       |      |        |          |         |         |                |                     |  |
|          |      |     |        |                |        |           |           |       |      |        |          |         |         |                |                     |  |
|          |      |     |        |                |        |           |           |       |      |        |          |         |         |                |                     |  |
|          |      |     |        |                |        |           |           |       |      |        |          |         |         |                |                     |  |
|          |      |     |        |                |        |           |           |       |      |        |          |         |         |                |                     |  |
|          |      |     |        |                |        |           |           |       |      |        |          |         |         |                |                     |  |
|          |      |     |        |                |        |           |           |       |      |        |          |         |         |                |                     |  |
|          |      |     |        |                |        |           |           |       |      |        |          |         |         |                |                     |  |
|          |      |     |        |                |        |           |           |       |      |        |          |         |         |                |                     |  |
|          |      |     |        |                |        |           |           |       |      |        |          |         |         |                |                     |  |
|          |      |     |        |                |        |           |           |       |      |        |          |         |         |                |                     |  |
|          |      |     |        |                |        |           |           |       |      |        |          |         |         |                |                     |  |
|          |      |     |        |                |        |           |           |       |      |        |          |         |         |                |                     |  |
|          |      |     |        |                |        |           |           |       |      |        |          |         |         |                |                     |  |
|          |      |     |        |                |        |           |           |       |      |        |          |         |         |                |                     |  |
|          |      |     |        |                |        |           |           |       |      |        |          |         |         |                |                     |  |
|          |      |     |        |                |        |           |           |       |      |        |          |         |         |                |                     |  |
|          |      |     |        |                |        |           |           |       |      |        |          |         |         |                |                     |  |
|          |      |     |        |                |        |           |           |       |      |        |          |         |         |                |                     |  |
|          |      |     |        |                |        |           |           |       |      |        |          |         |         |                |                     |  |
|          |      |     |        |                |        |           |           |       |      |        |          |         |         |                |                     |  |
|          |      |     |        |                |        |           |           |       |      |        |          |         |         |                |                     |  |
|          |      |     |        |                |        |           |           |       |      |        |          |         |         |                |                     |  |
|          |      |     |        |                |        |           |           |       |      |        |          |         |         |                |                     |  |
|          |      |     |        |                |        |           |           |       |      |        |          |         |         |                |                     |  |
|          |      |     |        |                |        |           |           |       |      |        |          |         |         |                |                     |  |
|          |      |     |        |                |        |           |           |       |      |        |          |         |         |                |                     |  |
|          |      |     |        |                |        |           |           |       |      |        |          |         |         |                |                     |  |
|          |      |     |        |                |        |           |           |       |      |        |          |         |         |                |                     |  |
|          |      |     |        |                |        |           |           |       |      |        |          |         |         |                |                     |  |
|          |      |     |        |                |        |           |           |       |      |        |          |         |         |                |                     |  |
|          |      |     |        |                |        |           |           |       |      |        |          |         |         |                |                     |  |
|          |      |     |        |                |        |           |           |       |      |        |          |         |         |                |                     |  |
|          |      |     |        |                |        |           |           |       |      |        |          |         |         |                |                     |  |
|          |      |     |        |                |        |           |           |       |      |        |          |         |         |                |                     |  |
|          |      |     |        |                |        |           |           |       |      |        |          |         |         |                |                     |  |
|          |      |     |        |                |        |           |           |       |      |        |          |         |         |                |                     |  |
|          |      |     |        |                |        |           |           |       |      |        |          |         |         |                |                     |  |
|          |      |     |        |                |        |           |           |       |      |        |          |         |         |                |                     |  |
|          |      |     |        |                |        |           |           |       |      |        |          |         |         |                |                     |  |
|          |      |     |        |                |        |           |           |       |      |        |          |         |         |                |                     |  |
|          |      |     |        |                |        |           |           |       |      |        |          |         |         |                |                     |  |
|          |      |     |        |                |        |           |           |       |      |        |          |         |         |                |                     |  |
|          |      |     |        |                |        |           |           |       |      |        |          |         |         |                |                     |  |
|          |      |     |        |                |        |           |           |       |      |        |          |         |         |                |                     |  |
|          |      |     |        |                |        |           |           |       |      |        |          |         |         |                |                     |  |
|          |      |     |        |                |        |           |           |       |      |        |          |         |         |                |                     |  |
|          |      |     |        |                |        |           |           |       |      |        |          |         |         |                |                     |  |
|          |      |     |        |                |        |           |           |       |      |        |          |         |         |                |                     |  |
|          |      |     |        |                |        |           |           |       |      |        |          |         |         |                |                     |  |
|          |      |     |        |                |        |           |           |       |      |        |          |         |         |                |                     |  |
|          |      |     |        |                |        |           |           |       |      |        |          |         |         |                |                     |  |
|          |      |     |        |                |        |           |           |       |      |        |          |         |         |                |                     |  |
|          |      |     |        |                |        |           |           |       |      |        |          |         |         |                |                     |  |
|          |      |     |        |                |        |           |           |       |      |        |          |         |         |                |                     |  |
|          |      |     |        |                |        |           |           |       |      |        |          |         |         |                | </                  |  |

## DOOR SCHEDULE KEY

**MATERIAL**  
 AL ALUMINUM  
 HM HOLLOW METAL  
 HMI HOLLOW METAL INSULATED  
 SCW SOLID CORE WOOD  
 GS GALVANIZED STEEL  
 DW DRYWALL RETURN  
 SS STAINLESS STEEL

**GLASS**  
 SG SAFETY GLASS

**FINISH**  
 F FACTORY PAINT  
 P PAINT  
 S&V STAIN & VARNISH  
 AAL ANODIZED ALUMINUM  
 PL PLASTIC LAMINATE

## HARDWARE SETS

**Hardware Set 1**  
 (1-1/2) Pair Hinges  
 (1) Lockset (Classroom)  
 (1) Wall Stop

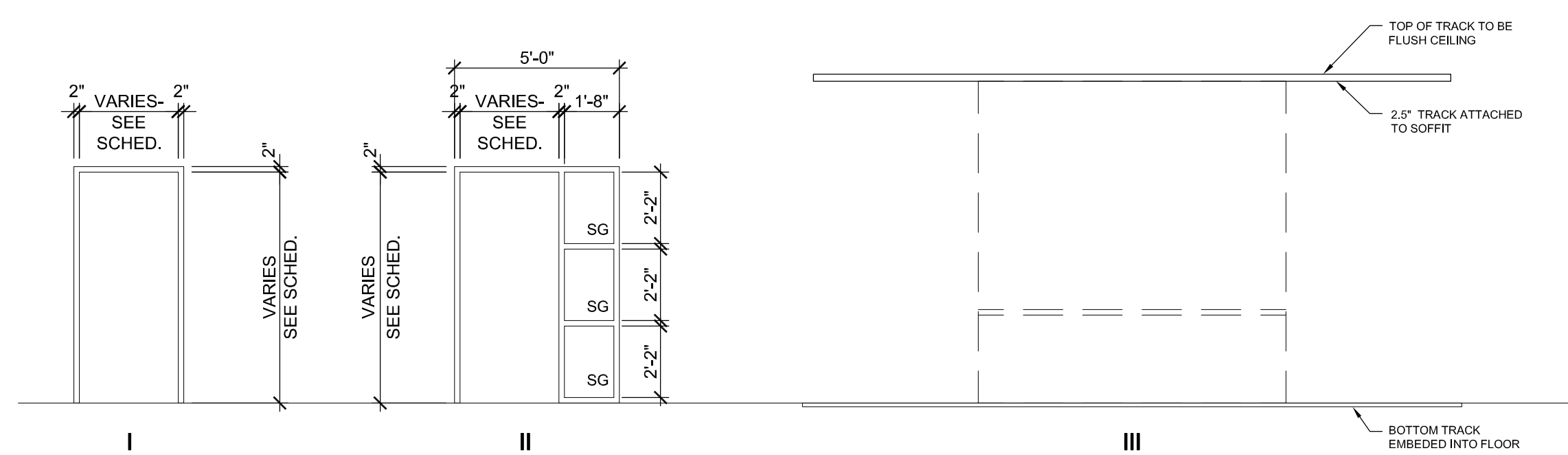
**Hardware Set 2**  
 (1) Bottom Pivot Hinge  
 (1) Top Pivot / Concealed Closer  
 (2) Kick Plates  
 (2) Floor Stops

**Hardware Set 3**  
 (1-1/2) Pair Hinges  
 (1) Roller Latch  
 \*Provide Recessed Hardware  
 (1) Recessed Pull



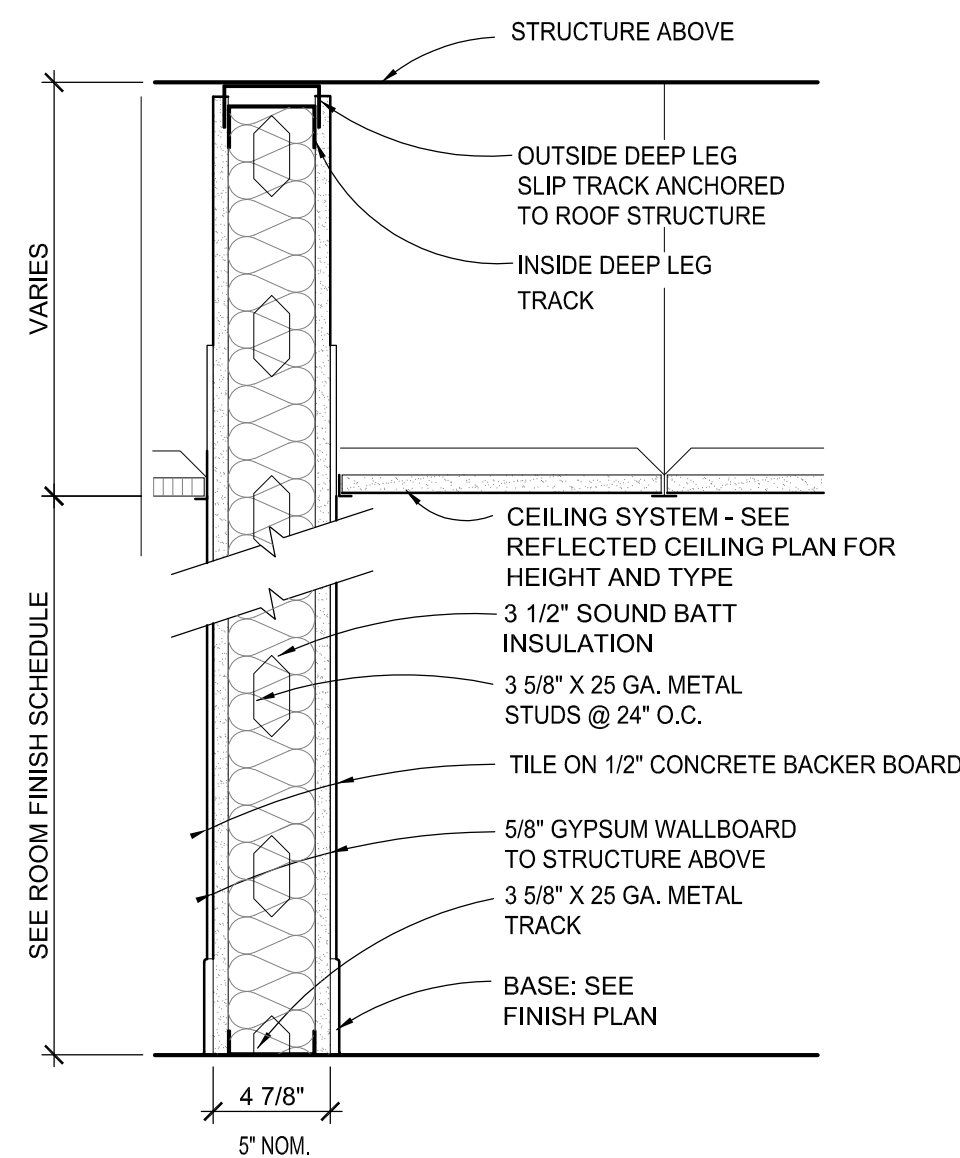
## DOOR TYPES

SCALE: N.T.S.



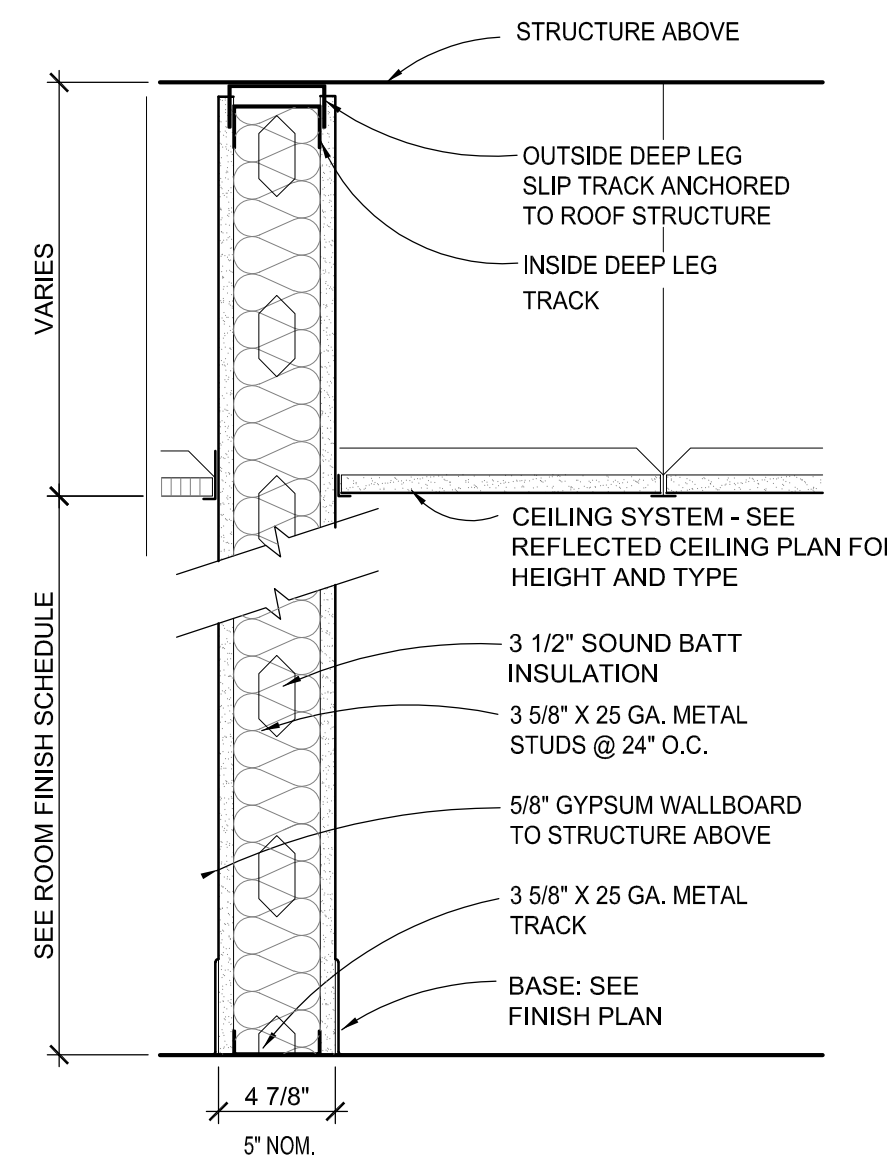
## DOOR FRAME TYPES

SCALE: N.T.S.



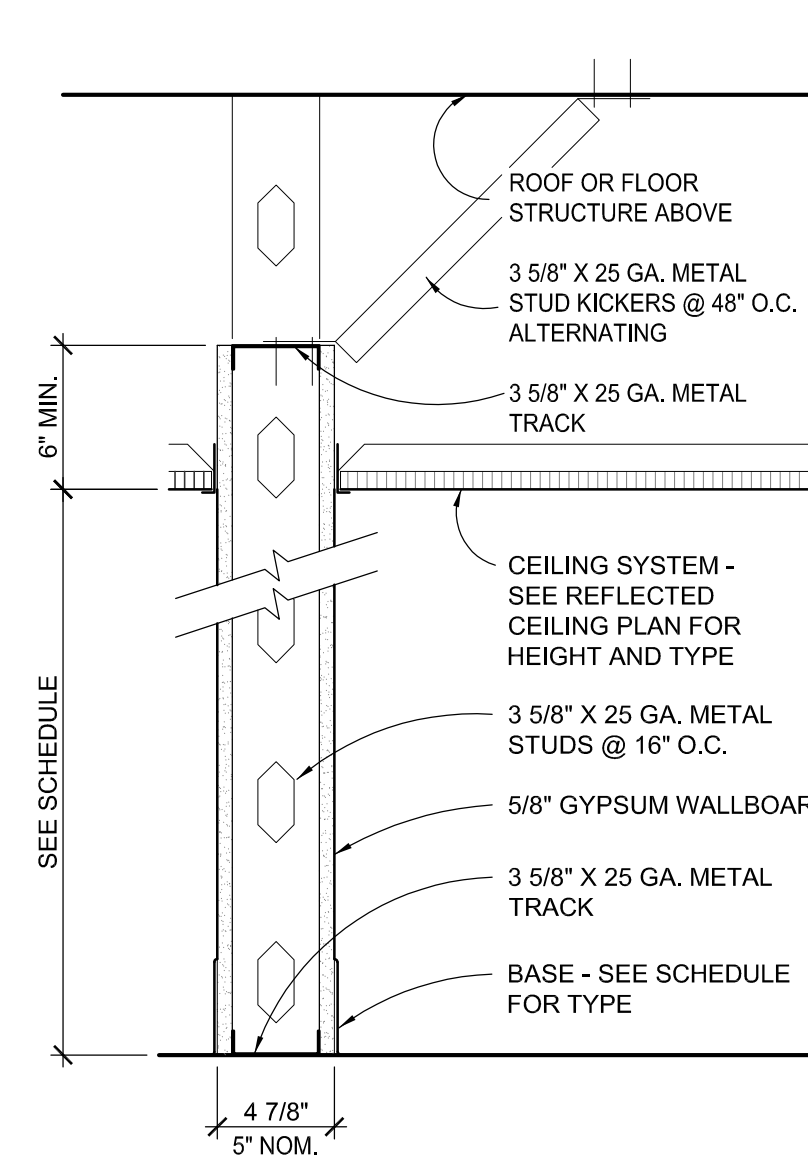
## WALL TYPE A

1 1/2" = 1'-0"



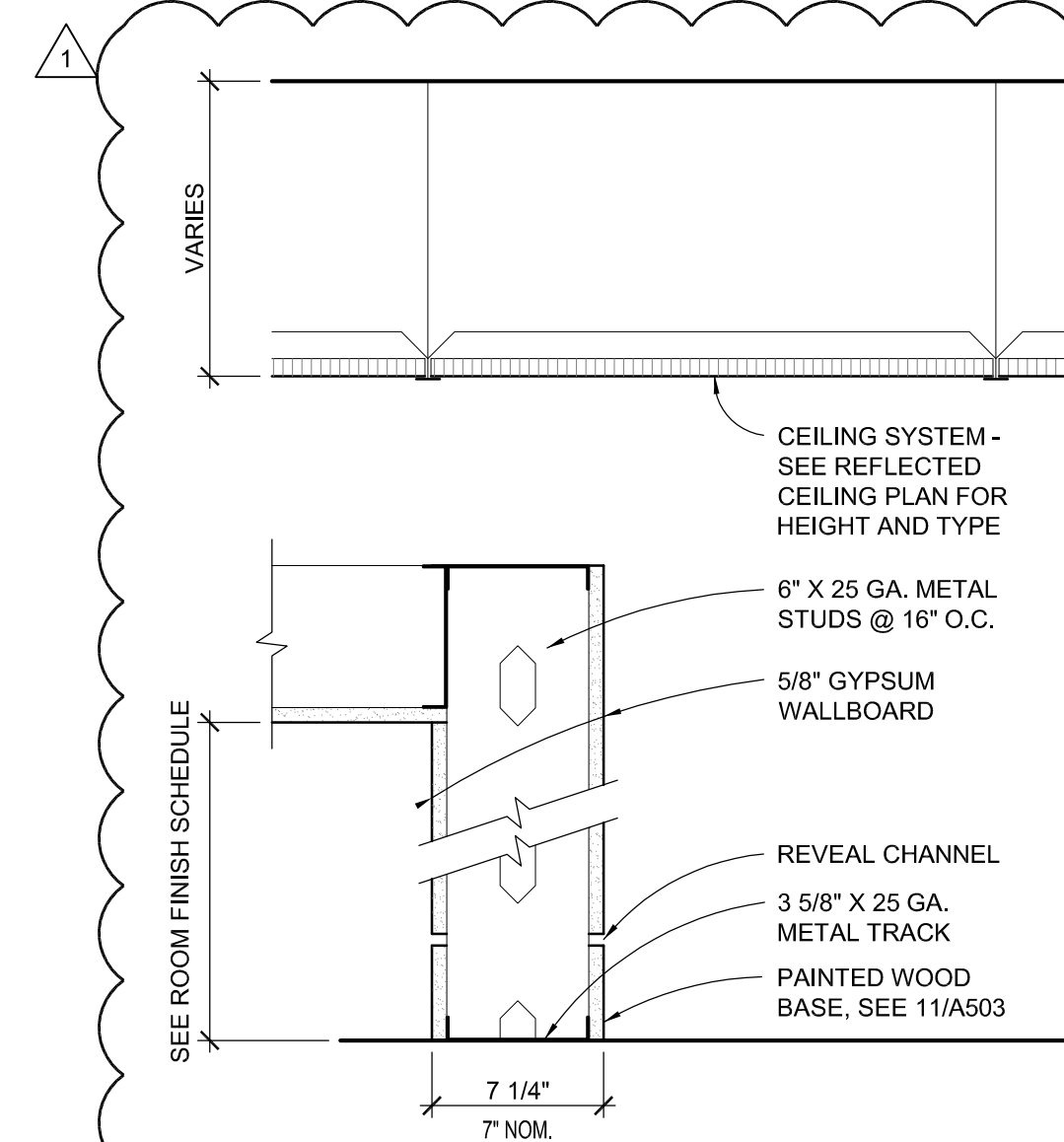
## WALL TYPE B

1 1/2" = 1'-0"



## WALL TYPE C

1 1/2" = 1'-0"



## WALL TYPE D

1 1/2" = 1'-0"