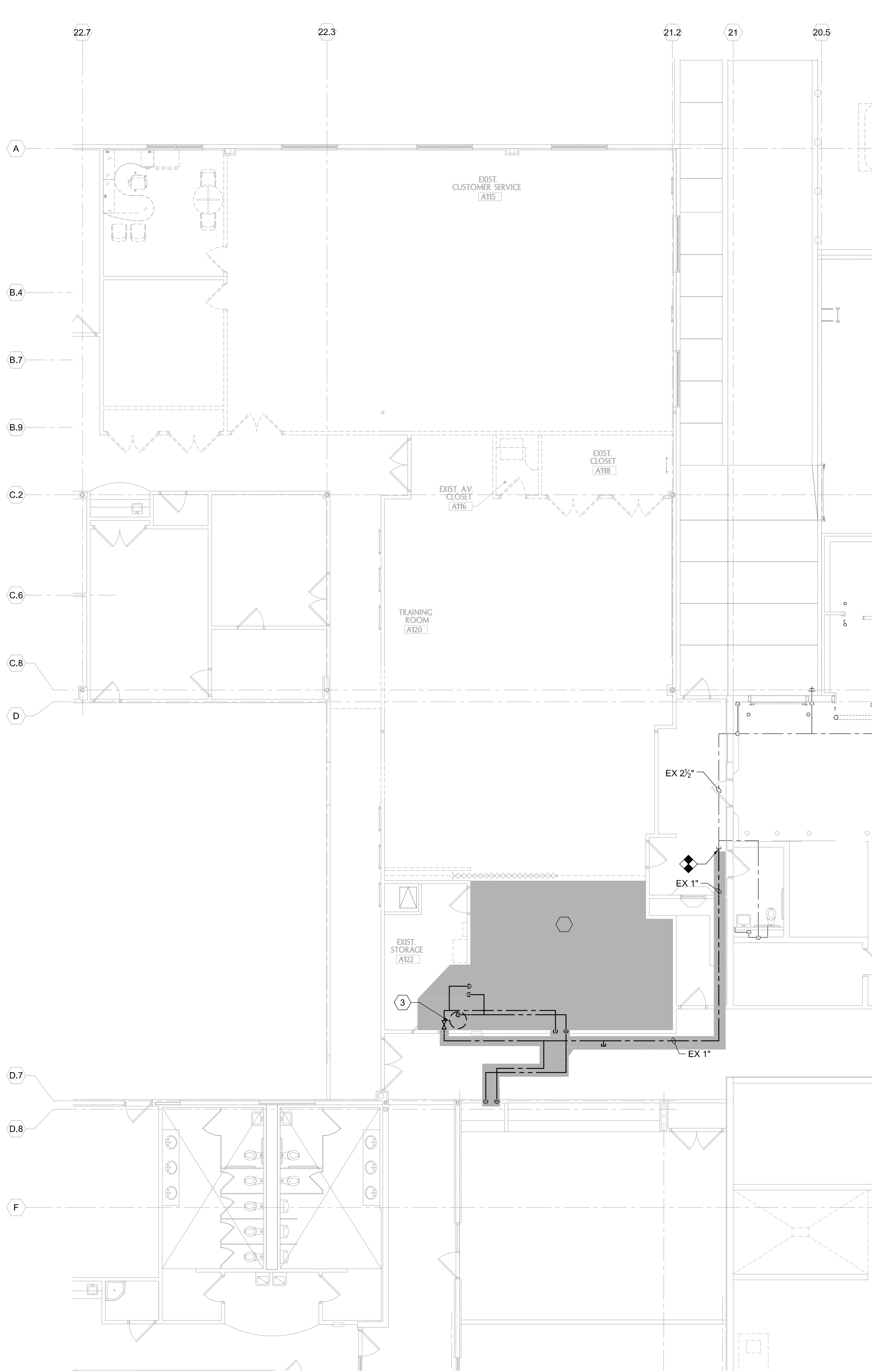


ENLARGED DRAIN, WASTE, & VENT PLAN
1/8" = 1'-0"



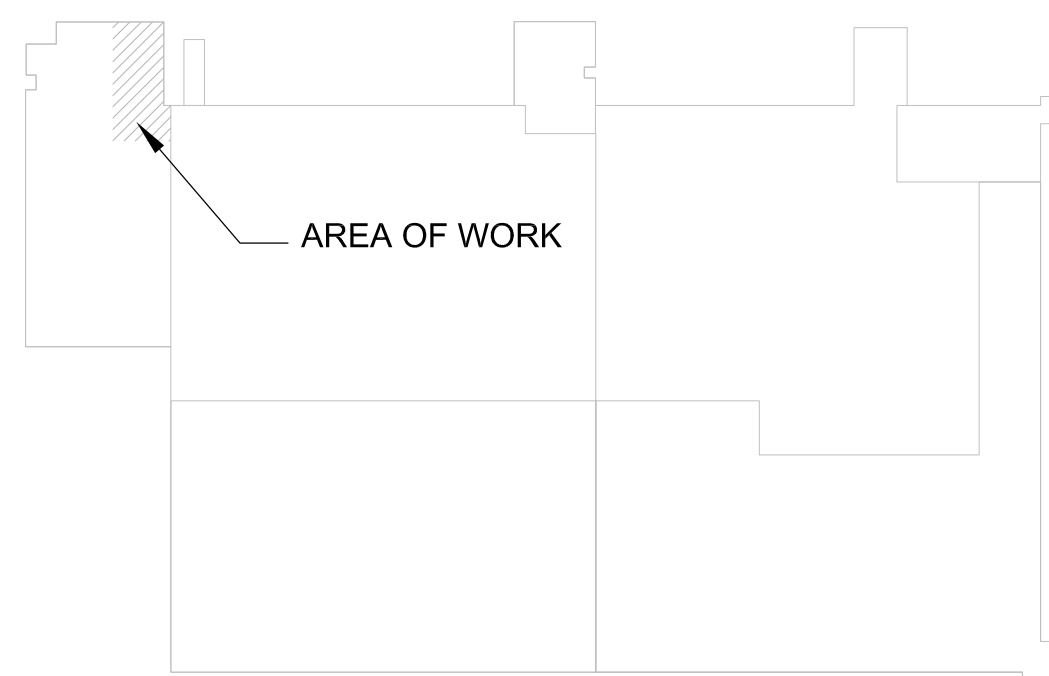
ENLARGED DOMESTIC WATER PLAN
1/8" = 1'-0"

GENERAL DEMOLITION NOTES

1. VERIFY FIELD CONDITIONS PRIOR TO BIDDING. PLANS MAY NOT INDICATE EACH DEVICE TO BE REMOVED, OR INDICATE NECESSARY RELOCATION OF EQUIPMENT OR PLUMBING SYSTEMS.
2. DISCONNECT, DEMOLISH, AND REMOVE PLUMBING SYSTEMS, EQUIPMENT AND COMPONENTS INDICATED TO BE REMOVED. DISPOSE OF DEMOLISHED EQUIPMENT AND MATERIALS IN COMPLIANCE WITH LOCAL AUTHORITIES HAVING JURISDICTION.
- 2.1. PIPING TO BE REMOVED: REMOVE PORTION OF PIPING INDICATED TO BE REMOVED AND CAP OR PLUG REMAINING PIPING WITH SAME OR COMPATIBLE MATERIAL.
- 2.2. PIPING TO BE ABANDONED IN PLACE: DRAIN PIPING AND CAP OR PLUG PIPING WITH SAME OR COMPATIBLE MATERIAL. PENETRATIONS THROUGH ROOF CONSTRUCTION SHALL BE INSULATED AND SEALED WEATHERTIGHT.
- 2.3. EQUIPMENT TO BE REMOVED: DISCONNECT SERVICES AND REMOVE EQUIPMENT. REMOVE PIPING AND CAP OR PLUG AT MAIN WITH SAME OR COMPATIBLE MATERIAL.
- 2.4. EQUIPMENT TO BE REPLACED: DISCONNECT SERVICES AND REMOVE EQUIPMENT. MODIFY EXISTING SERVICES AS NECESSARY TO ACCEPT NEW EQUIPMENT.
- 2.5. EQUIPMENT TO BE RELOCATED: DISCONNECT SERVICES AND REMOVE, CLEAN AND STORE EQUIPMENT. REMOVE PIPING AND CAP OR PLUG AT MAIN WITH SAME OR COMPATIBLE MATERIAL. WHEN APPROPRIATE, REINSTALL, RECONNECT, AND MAKE EQUIPMENT OPERATIONAL.
- 2.6. EQUIPMENT TO BE SALVAGED: DISCONNECT SERVICES AND REMOVE EQUIPMENT AND DELIVER TO OWNER. REMOVE PIPING AND CAP OR PLUG AT MAIN WITH SAME OR COMPATIBLE MATERIAL.
3. IF PIPING, INSULATION OR EQUIPMENT TO REMAIN IS DAMAGED IN APPEARANCE OR IS UNSERVICEABLE, REMOVE DAMAGED OR UNSERVICEABLE PORTIONS AND REPLACE WITH NEW PRODUCTS OF EQUAL CAPACITY AND QUALITY.
4. REFER TO DRAWINGS OF OTHER DIVISIONS FOR ADDITIONAL DEMOLITION WORK.
5. COORDINATE INTERRUPTION OF EXISTING SERVICE(S) WITH THE OWNER AND GENERAL CONTRACTOR. DO NOT INTERRUPT SERVICE(S) TO FACILITIES OCCUPIED BY OWNER OR OTHERS WITHOUT WRITTEN PERMISSION FROM THE OWNER AND GENERAL CONTRACTOR.
6. CUTTING AND PATCHING BY THIS CONTRACTOR PER SPECIFICATIONS. COORDINATE WITH GENERAL CONTRACTOR.

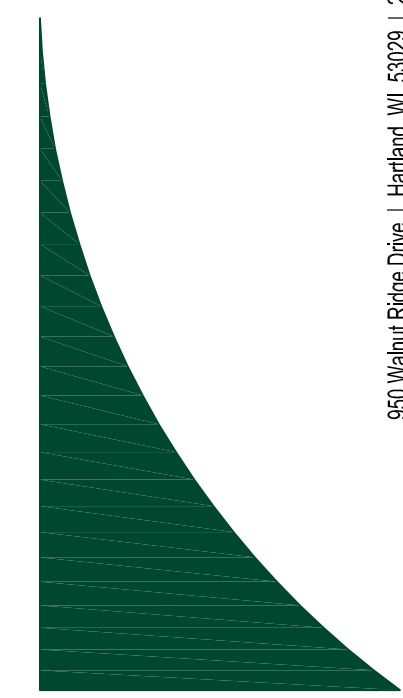
SHEET KEY NOTES

1. EXISTING GREASE TRAP TO BE REMOVED.
2. EXISTING KITCHEN AREA TO BE RENOVATED. ALL PLUMBING IN SHADED AREA TO BE REMOVED UNLESS OTHERWISE NOTED.
3. EXISTING WATER HEATER TO BE REMOVED.



KEY PLAN
NOT TO SCALE

ESI
ARCHITECTURAL &
ENGINEERING
SERVICES INC.



KITCHEN RENOVATION FOR
US FOODS - SOUTH FLORIDA
7598 NW 6TH AVENUE
BOCA RATON, FL 33487

REVISIONS	
△	1
△	2
△	3
△	4
△	5
△	6
△	7
△	8
△	9
△	10

DATE 1-6-20	JOB NO. 50-1414-19
DWG BY AMK	CHCKD BY JRO

SHEET TITLE
PLUMBING
DEMOLITION
FLOOR PLANS

PRELIMINARY DWGS.	
FINAL CONST. DWGS.	■

SHEET NUMBER

P101

PLUMBING