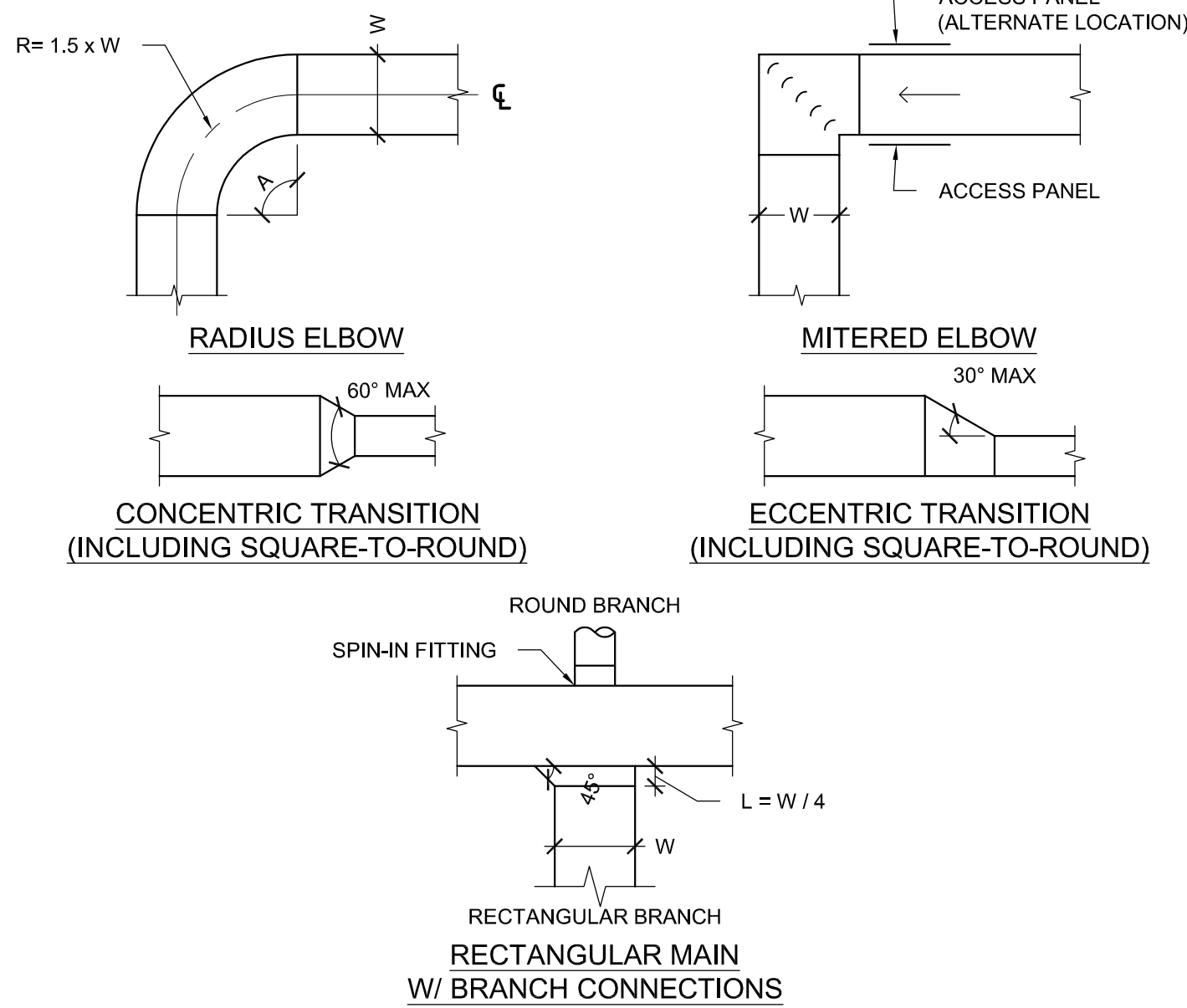
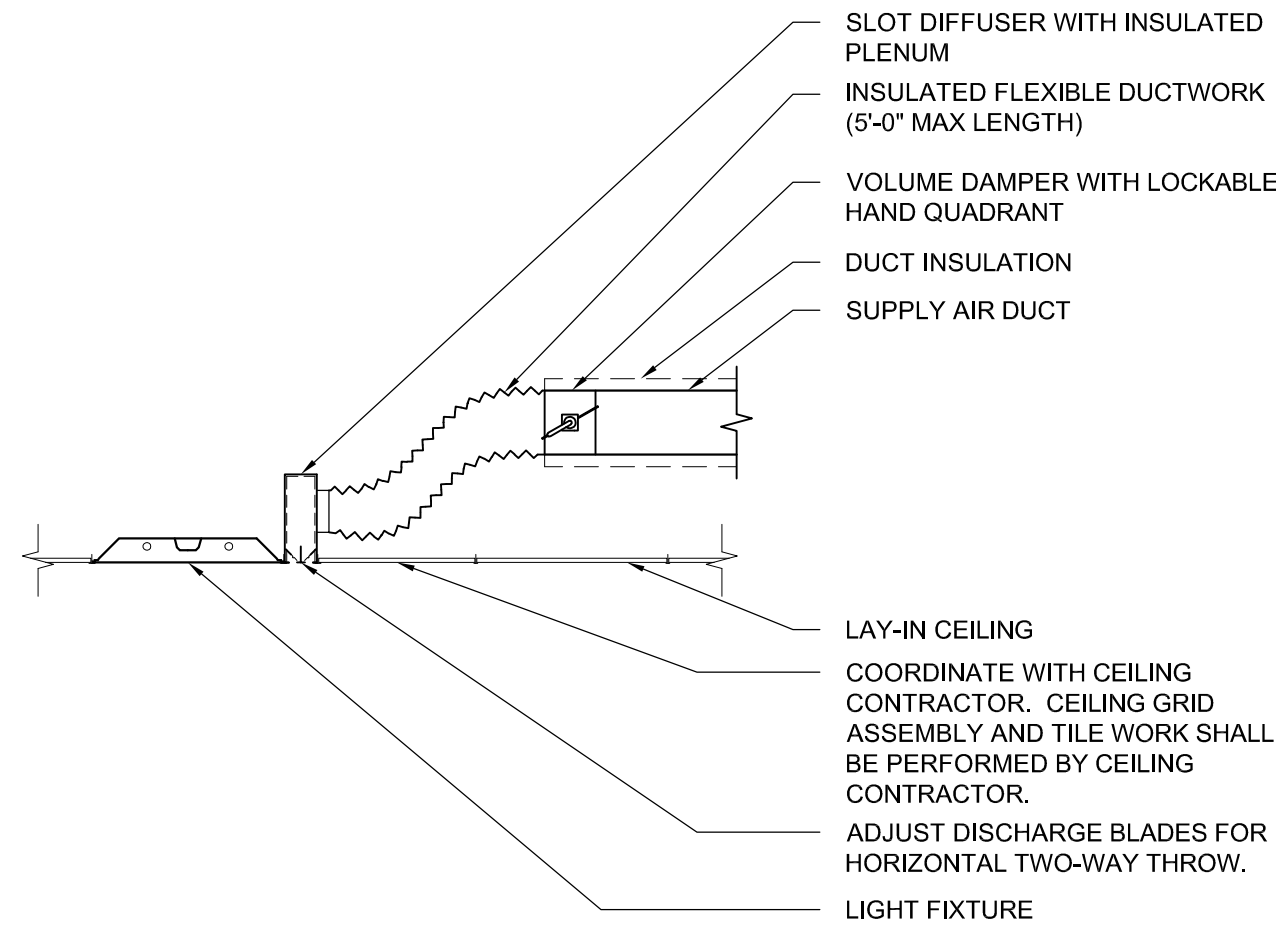


- NOTES:
- CURB SUPPORT FRAMING PROVIDED BY STRUCTURAL CONTRACTOR. COORDINATE LOCATION OF UNIT PRIOR TO INSTALLATION.
  - MAINTAIN INTEGRITY OF ROOFING MEMBRANE AT ROOF CURB. **DO NOT** PENETRATE ROOF MEMBRANE WITH ANY ACCESSORIES OR ACCESSORY FASTENERS.

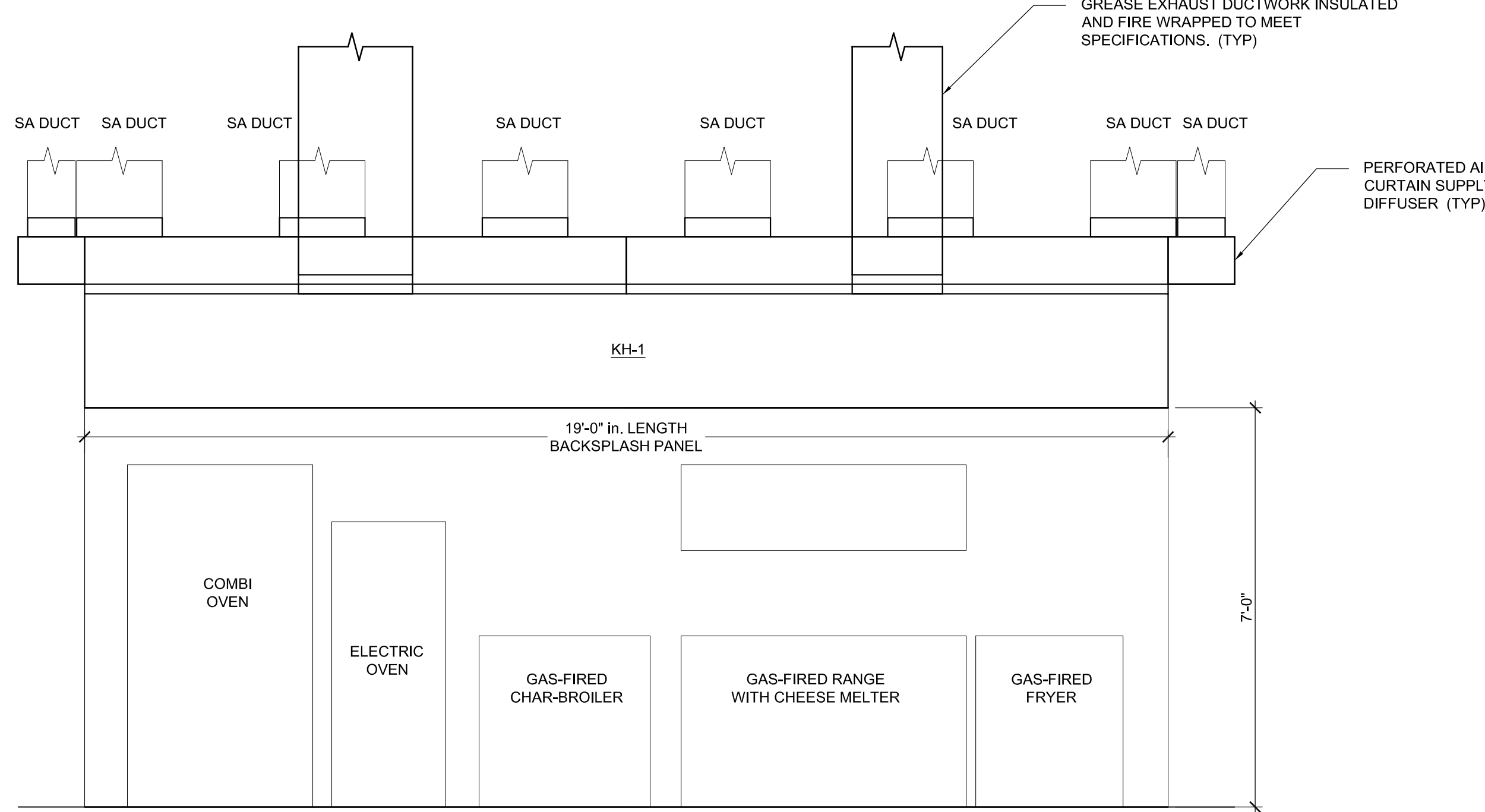
1 TYPICAL KITCHEN EXHAUST FAN  
H501 NOT TO SCALE



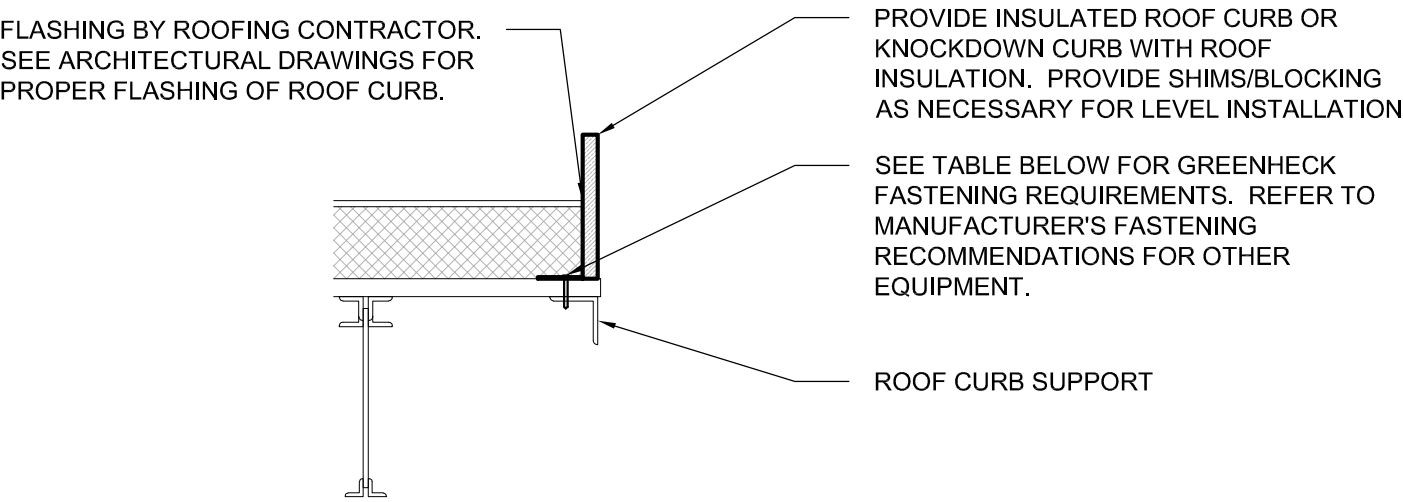
5 TYPICAL DUCT FITTINGS  
H501 NOT TO SCALE



9 TYPICAL SLOT DIFFUSER  
H501 NOT TO SCALE



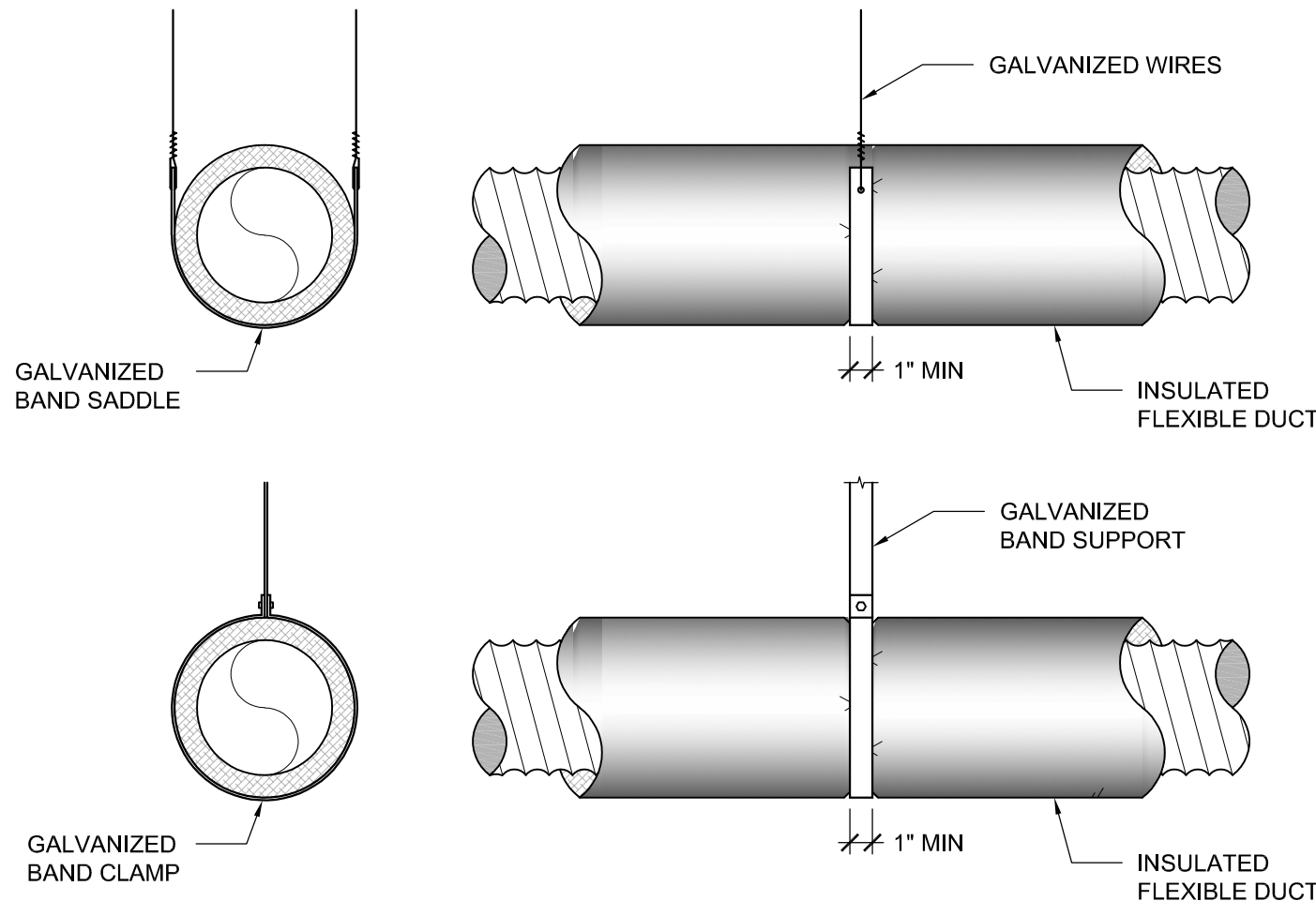
- GENERAL NOTES:
- SEE ARCHITECTURAL PLANS FOR KITCHEN EQUIPMENT INFORMATION.
  - SEE ARCHITECTURAL PLANS FOR BUILDING MATERIALS AND CONSTRUCTION.
  - FIRE DEPARTMENT APPROVAL SHALL BE REQUIRED ON FIRE PROTECTION SYSTEM FOR GREASE HOODS AND DUCTS AS REQUIRED BY SECTION 513 OF THE MECHANICAL CODE AND AS REQUIRED BY THE FIRE CODE.
  - PERFORMANCE, CAPTURE AND CONTAINMENT TESTS SHALL BE PERFORMED UPON INSTALLATION BEFORE FINAL TEST DATA AND PERFORMANCE TEST RESULTS SHALL BE DISPLAYED AND BE AVAILABLE UPON REQUEST.
  - A DRAWING OF THE EXHAUST SYSTEM(S) INSTALLATION ALONG WITH A COPY OF OPERATING INSTRUCTIONS FOR SUBASSEMBLIES AND COMPONENTS USED IN THE EXHAUST SYSTEM(S), INCLUDING ELECTRICAL SCHEMATICS, SHALL BE AVAILABLE ON THE PREMISES.
  - ALL FIRE-EXTINGUISHING SYSTEMS SHALL BE INTERCONNECTED TO THE FUEL OR CURRENT SUPPLY SO THAT THE FUEL OR CURRENT IS AUTOMATICALLY SHUT OFF TO ALL EQUIPMENT UNDER THE HOOD WHEN THE SYSTEM IS ACTIVATED.
  - PRIOR TO THE USE OR CONCEALMENT OF A PORTION OF A GREASE DUCT SYSTEM, A LEAKAGE TEST SHALL BE PERFORMED TO DETERMINE THAT ALL WELDED JOINTS AND SEAMS ARE LIQUID TIGHT.
  - ALL CANOPY TYPE HOODS SHALL OVERHANG A MINIMUM OF 6" BEYOND THE COOKING SURFACE ON ALL OPEN SIDES.
  - WHERE ENCLOSURES ARE NOT REQUIRED, HOODS, GREASE REMOVAL DEVICES, EXHAUST FANS, AND EXHAUST DUCT SHALL HAVE A CLEARANCE OF AT LEAST 18" FROM COMBUSTIBLE MATERIALS, 3" FROM LIMITED-COMBUSTIBLE MATERIALS, AND 0" FROM NON-COMBUSTIBLE MATERIALS. EXCEPTION-1: LISTED EXHAUST HOODS, DUCTS, OR GREASE REMOVAL DEVICES. EXCEPTION-2: REDUCED CLEARANCE TO COMBUSTIBLE MATERIAL IF THE MATERIAL IS PROTECTED. PROVIDE DETAIL OF PROTECTION APPLIED TO COMBUSTIBLE OR LIMITED COMBUSTIBLE MATERIAL FOR REDUCED CLEARANCE PER SECTION 507.3.2 OF THE MECHANICAL CODE.



GREENHECK FAN MODEL	GREENHECK FAN SIZE	GREENHECK CURB CAP SIZE INCHES	MINIMUM FASTENERS PER SIDE	MINIMUM FASTENERS TOTAL
GB/CUBE	060 - 141	17x17 - 22x22	(2) 1/4"	(8) 1/4"
GB/CUBE	161 - 300	26x26 - 40x40	(3) 1/4"	(12) 1/4"
R/RB	18 - 24	14x14 - 30x30	(2) 5/16"	(8) 5/16"
R/RB	30 - 36	31x31 - 51x51	(3) 5/16"	(12) 5/16"
R/RB	42	52x52 - 72x72	(4) 5/16"	(16) 5/16"

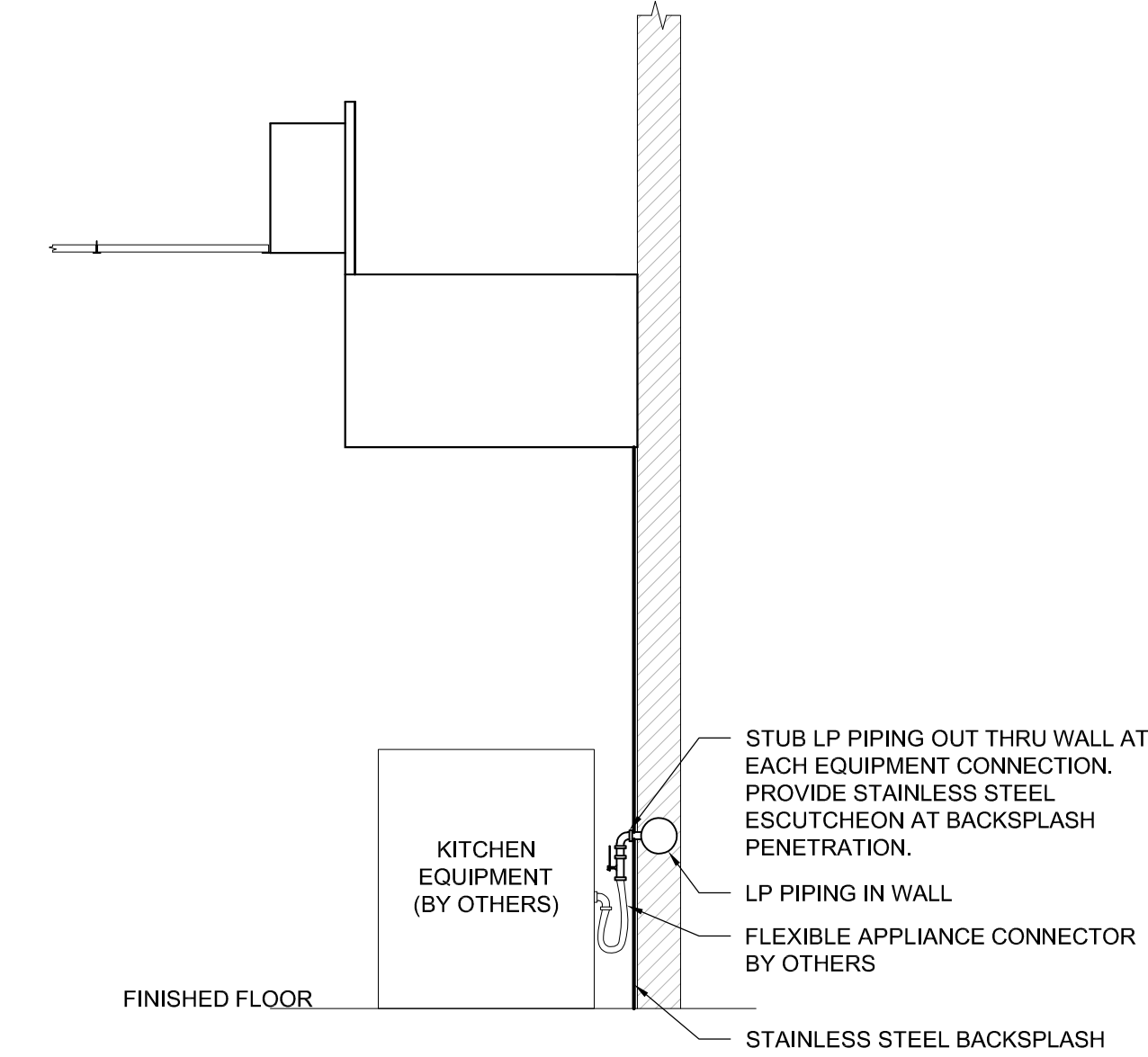
- NOTES:
- CURB SUPPORT FRAMING PROVIDED BY STRUCTURAL CONTRACTOR. COORDINATE LOCATION OF UNIT PRIOR TO INSTALLATION.
  - INSTALL ONE FASTENER AT EACH CORNER & IN CENTER OF EACH SIDE. ADD ADDITIONAL FASTENERS AS NECESSARY TO MAINTAIN A MAXIMUM OF 8" ON CENTER.
  - FOLLOW MANUFACTURER'S INSTALLATION REQUIREMENTS FOR EQUIPMENT NOT SHOWN IN CHART.

2 TYPICAL ROOF CURB  
H501 NOT TO SCALE



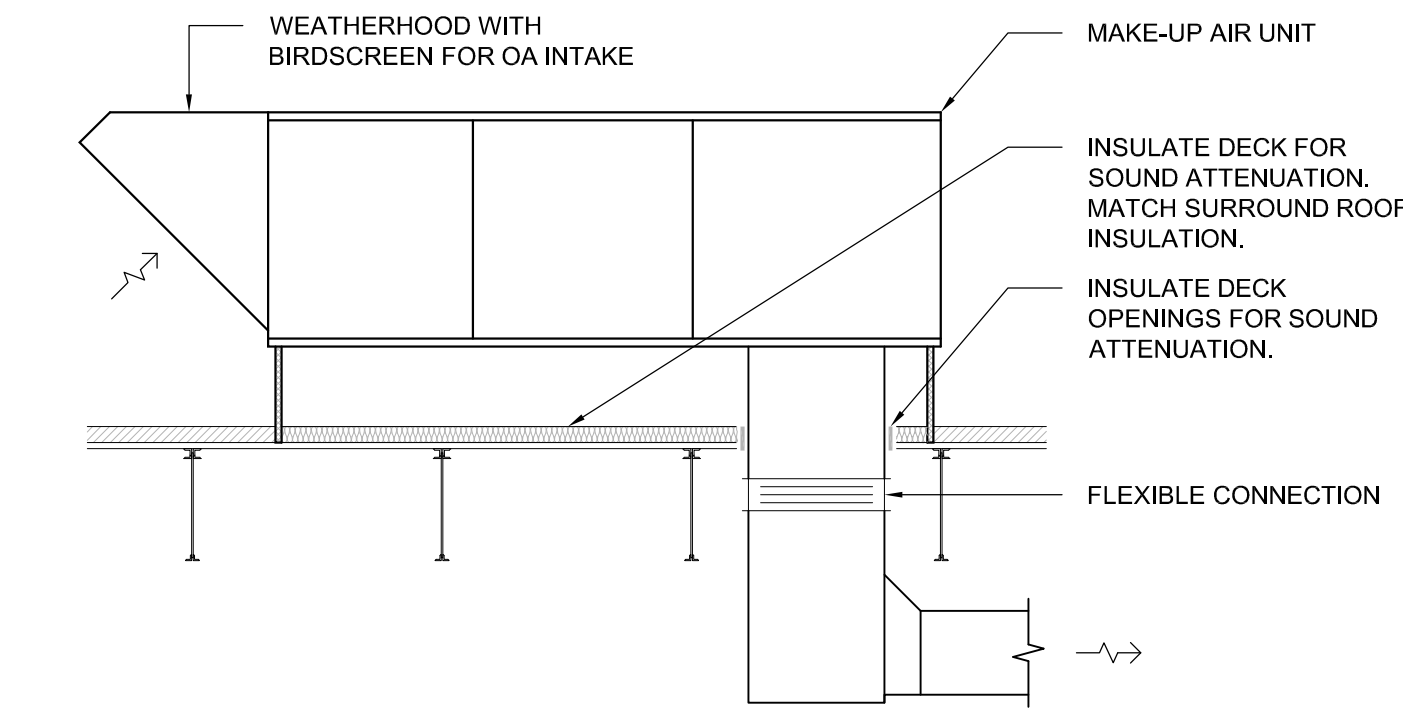
- NOTES:
- SUPPORT SYSTEM MUST NOT DAMAGE DUCT OR DEFORM DUCT SHAPE.
  - MAXIMUM PERMISSIBLE SAG IS 1/2" PER FOOT OF SPACING BETWEEN SUPPORTS. A CONNECTION TO ANOTHER DUCT OR EQUIPMENT CONSTITUTES A SUPPORT POINT.
  - THE SUPPORT SADDLE MUST COVER ONE-HALF THE CIRCUMFERENCE OF THE OUTSIDE DIAMETER OF THE FLEXIBLE DUCT AND FIT NEATLY AROUND THE LOWER HALF OF THE DUCT'S OUTER CIRCUMFERENCE.

6 TYPICAL FLEXIBLE DUCT SUPPORT  
H501 NOT TO SCALE



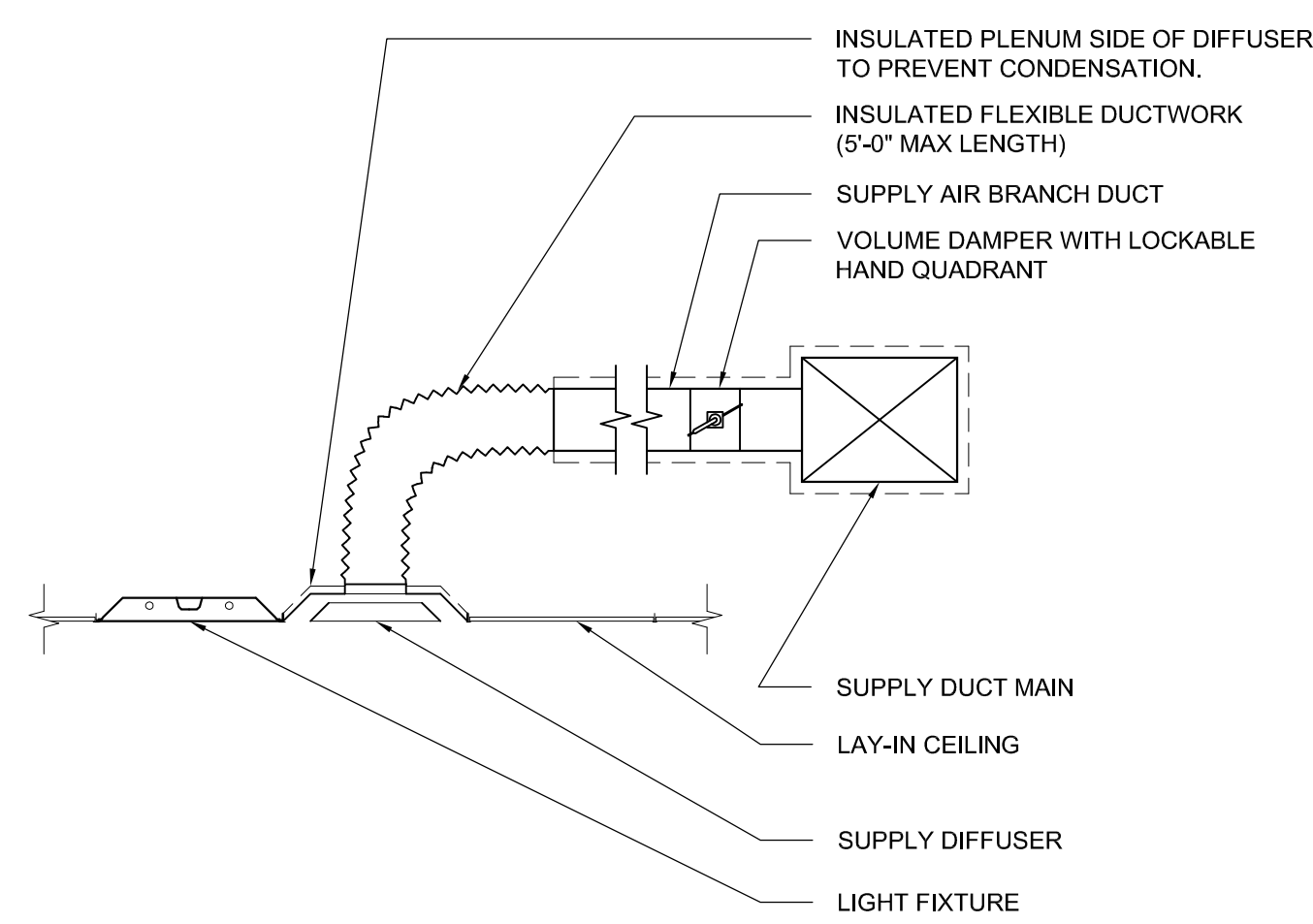
10 TYPICAL LP STUB FOR EQUIPMENT CONNECTION  
H501 NOT TO SCALE

11 TYPE 1 KITCHEN HOOD  
H501 NOT TO SCALE

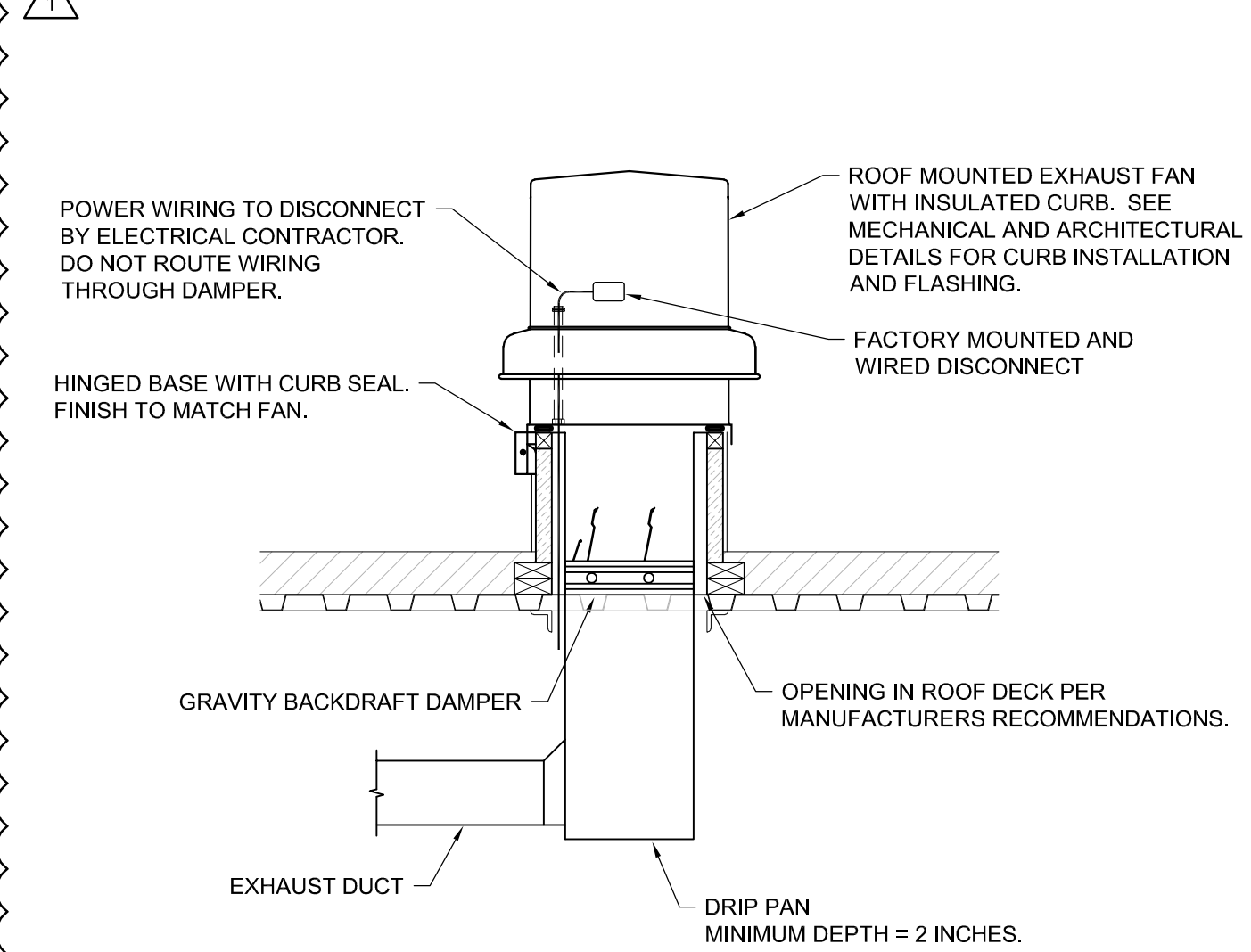


- NOTES:
- CURB SUPPORT FRAMING PROVIDED BY STRUCTURAL CONTRACTOR. COORDINATE LOCATION OF UNIT PRIOR TO INSTALLATION.

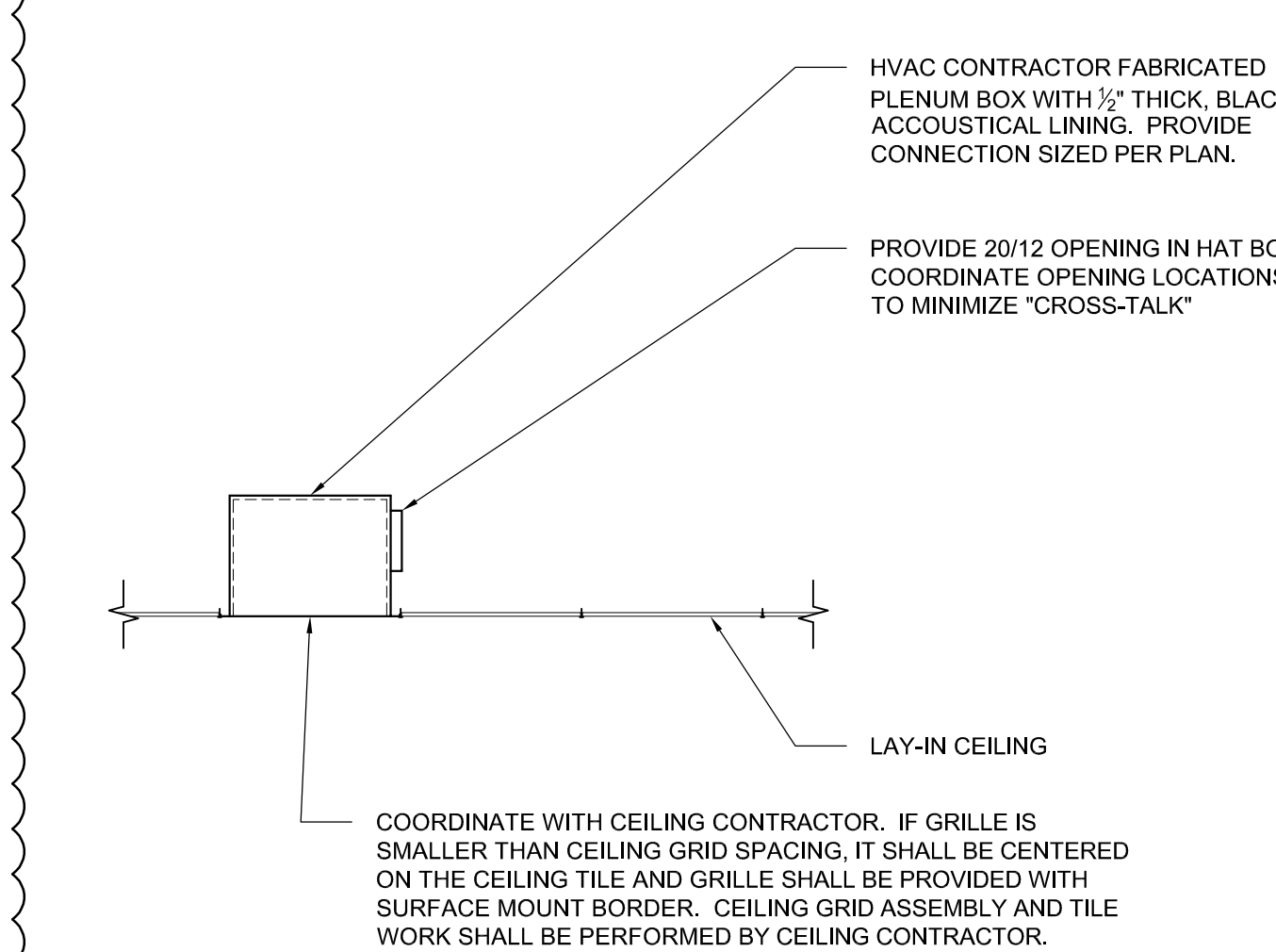
3 TYPICAL MAKE-UP AIR UNIT  
H501 NOT TO SCALE



7 TYPICAL SQUARE DIFFUSER  
H501 NOT TO SCALE



4 TYPICAL DUCTED EXHAUST FAN  
H501 NOT TO SCALE



8 TYPICAL TRANSFER GRILLE  
H501 NOT TO SCALE

REVISIONS	
1	2/17/2020 -
2	-
3	-
4	-
5	-
6	-
7	-
8	-
9	-
10	-
11	-

DATE 1-6-20	JOB NO. 50-1414-19
DWG By AMK	CHKD By JRO

SHEET TITLE  
DETAILS

PRELIMINARY DWGS.  
FINAL CONST. DWGS.  
SHEET NUMBER

H501  
HVAC