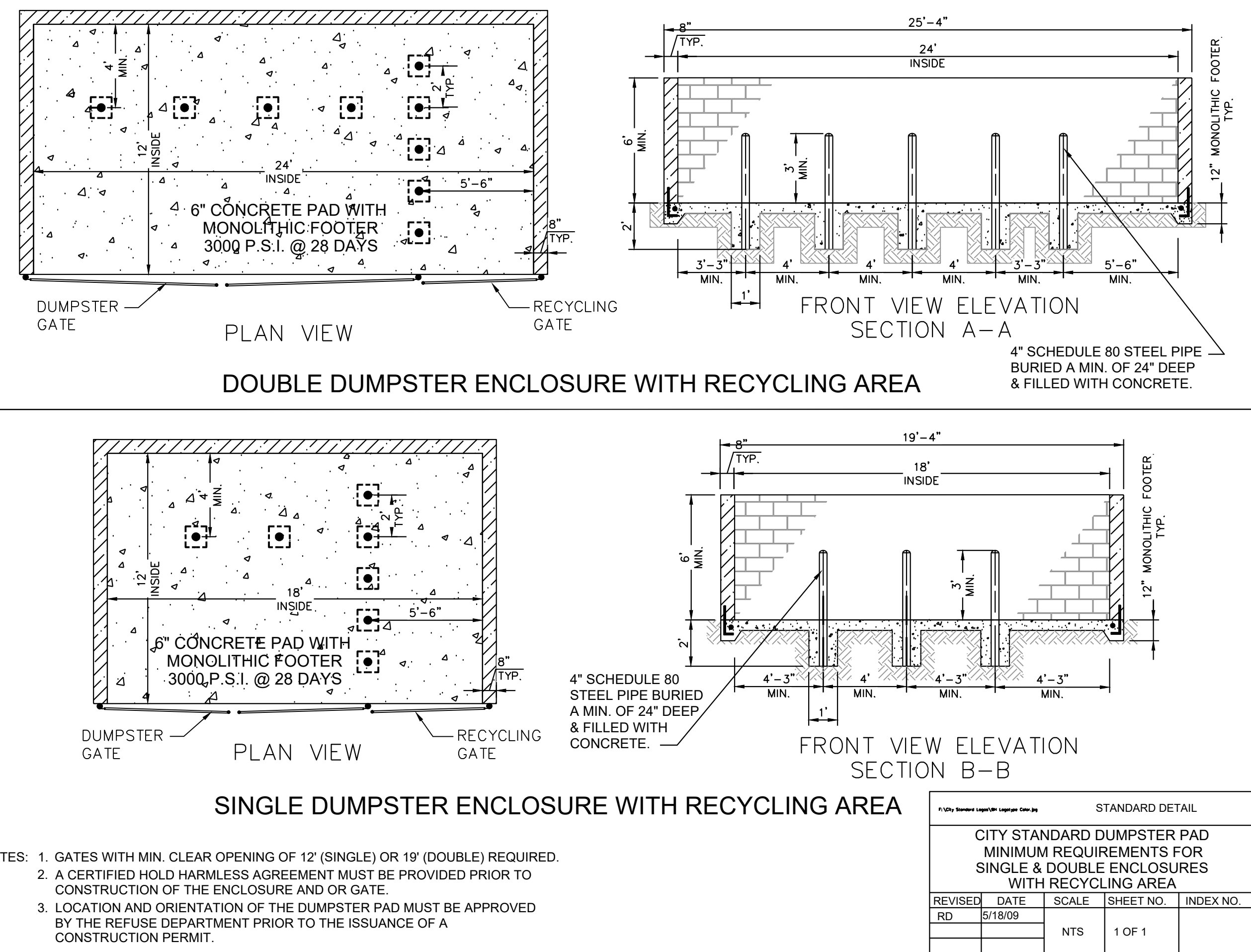
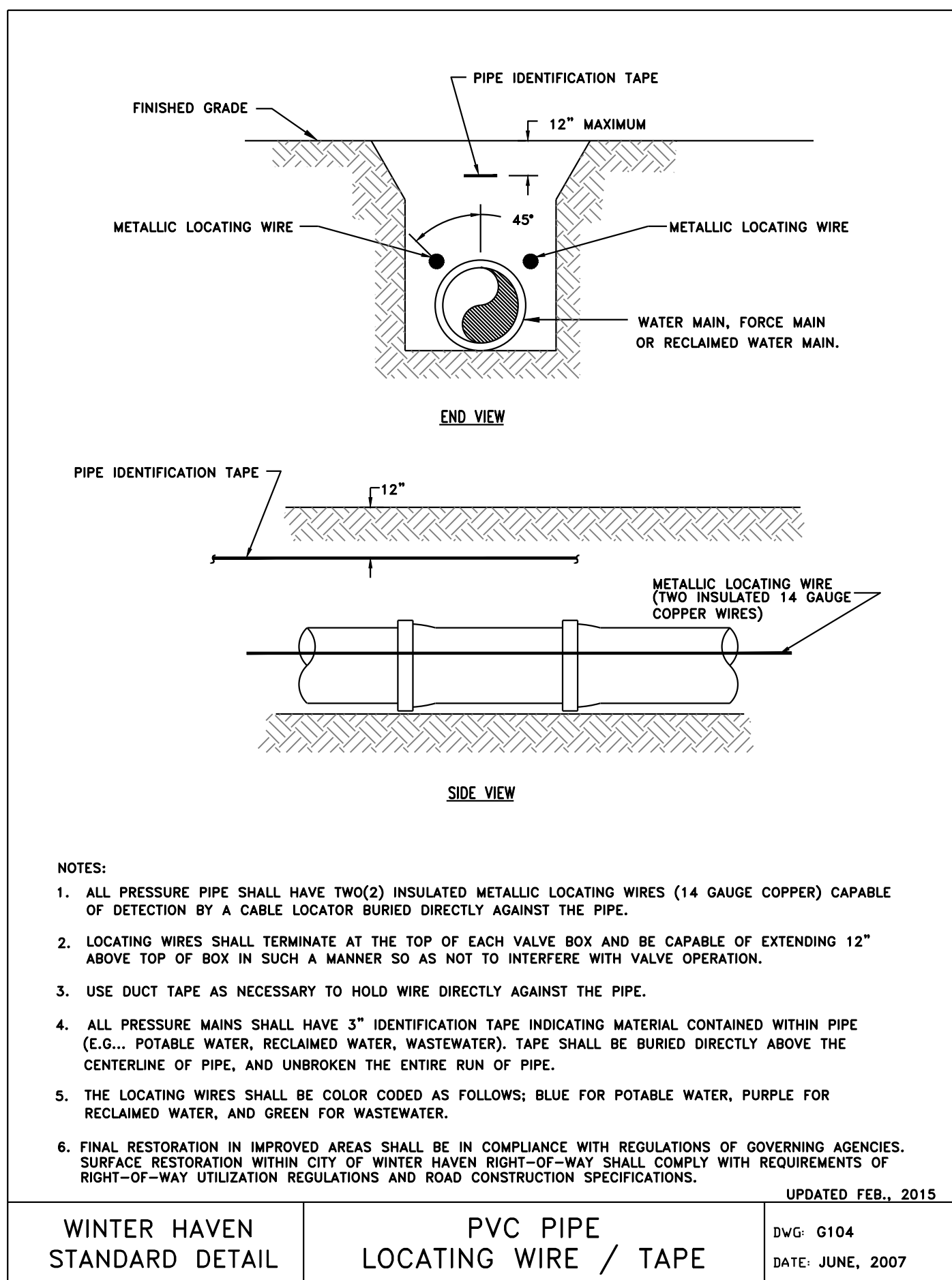
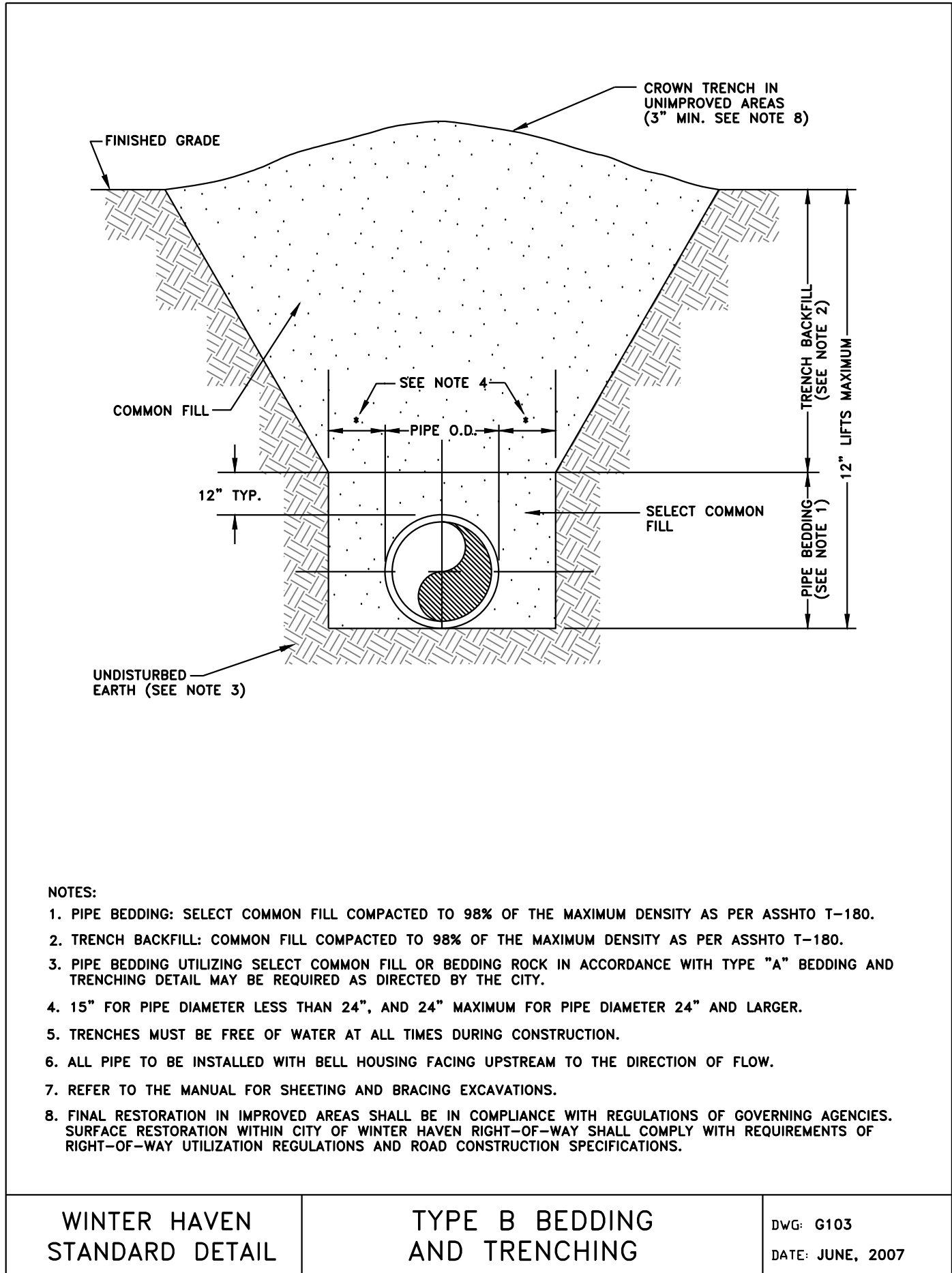
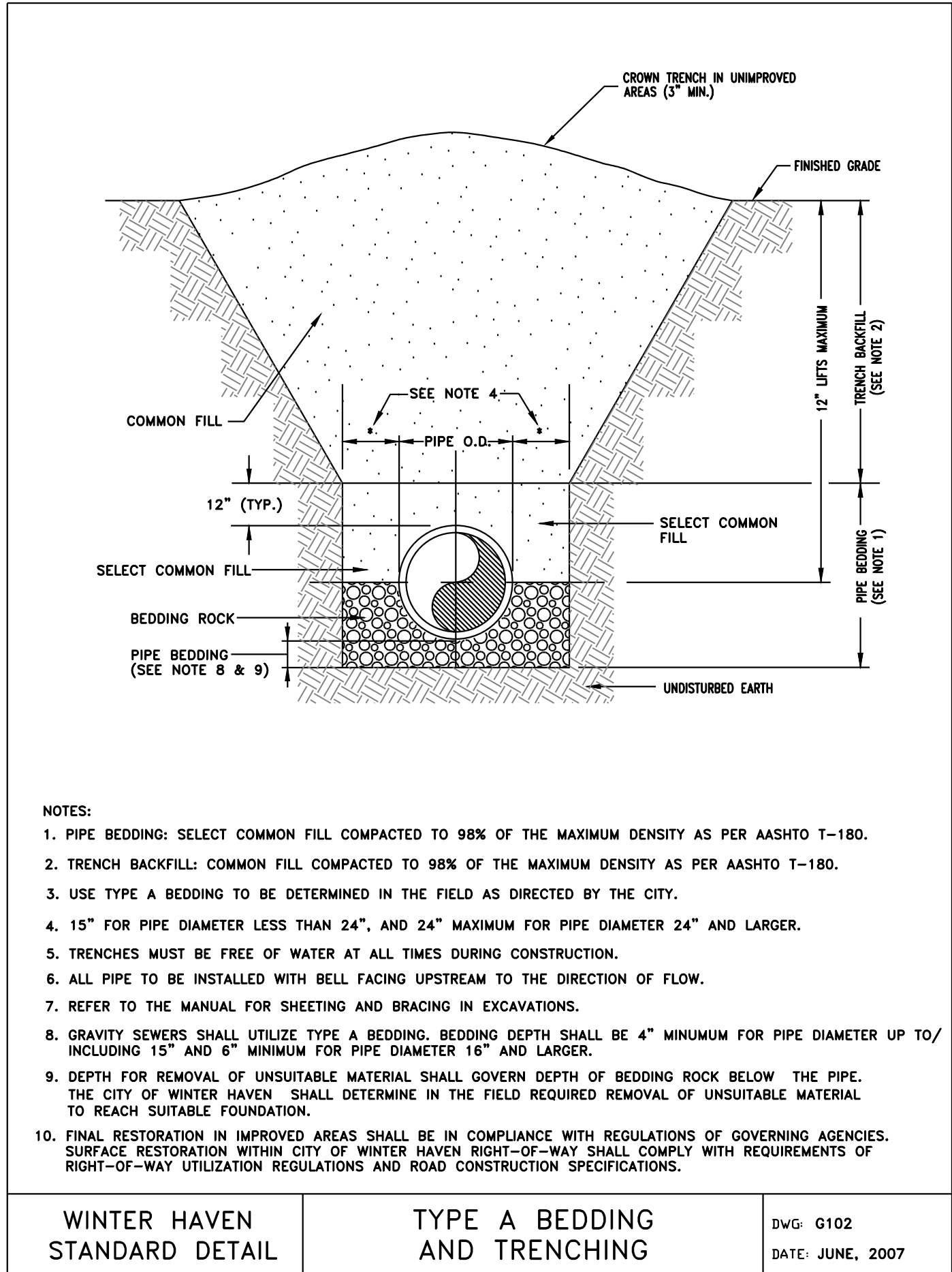
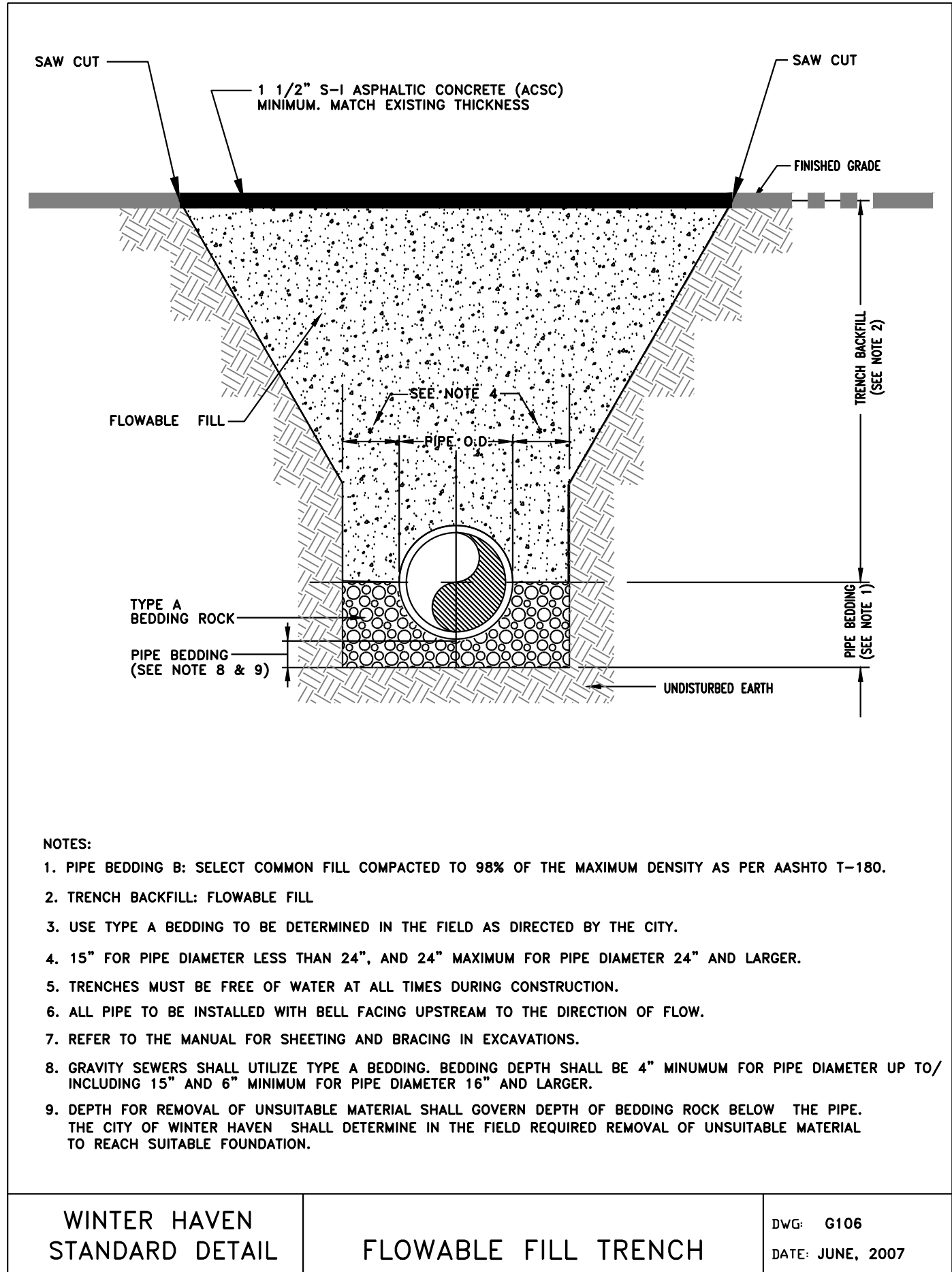
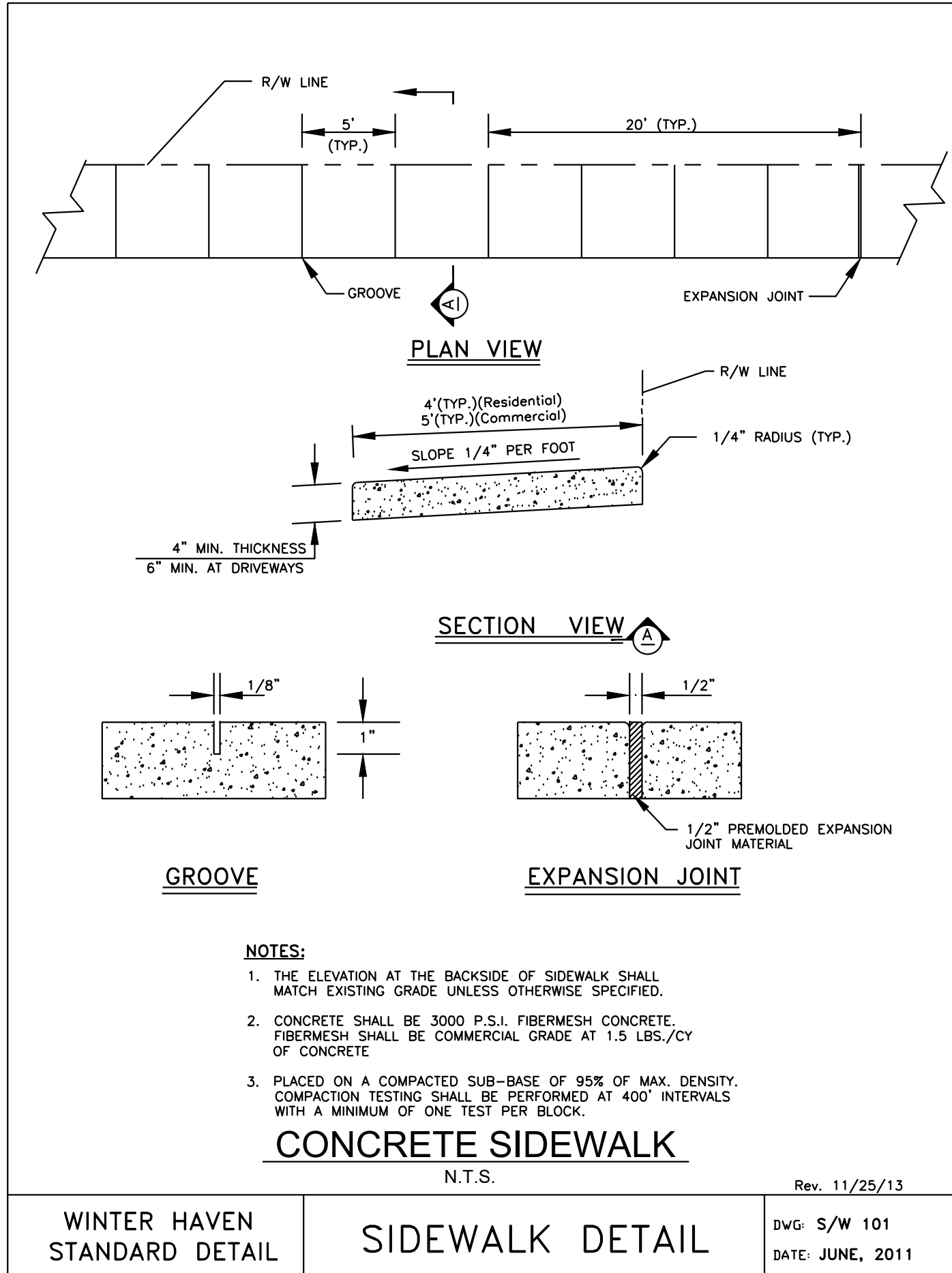


Dwg: N: JMJ - Westwood Apartments\Acad & Graphics\Engineering\Cover Details Notes.dwg, Layout: D4.0 COWH General Details



IMPORTANT:

ALL SERVICE LATERALS, VALVES, FIRE HYDRANTS, FITTINGS, INLETS, ETC... SHOWN HEREON ARE GRAPHICAL SYMBOLS ONLY AND NOT TO SCALE. REFER TO DETAIL SHEETS FOR EXACT LOCATION, SIZE AND OTHER SPECIFICS.

DAVID C. CARTER, P.E.
REGISTERED PROFESSIONAL ENGINEER
NO. 31915
STATE OF FLORIDA
PROFESSIONAL ENGINEER

DRAWN BY:
DESIGNED BY:
CHECKED BY:
D.C.C.
ISSUE DATE:
FIELD DATE:

CARTER ENGINEERING
137 5th. St. N.W., Winter Haven Fl. 33881
(863) 294-6965 • E-mail: dave@carter-eng.com

C.O.W.H. GENERAL DETAILS
WESTWOOD AT WINTER HAVEN
A MULTI-FAMILY COMMUNITY
WINTER HAVEN, FLORIDA

PROJECT No. 278
SHEET # D4.0
PLOT DATE
Oct. 09, 2019-9:47