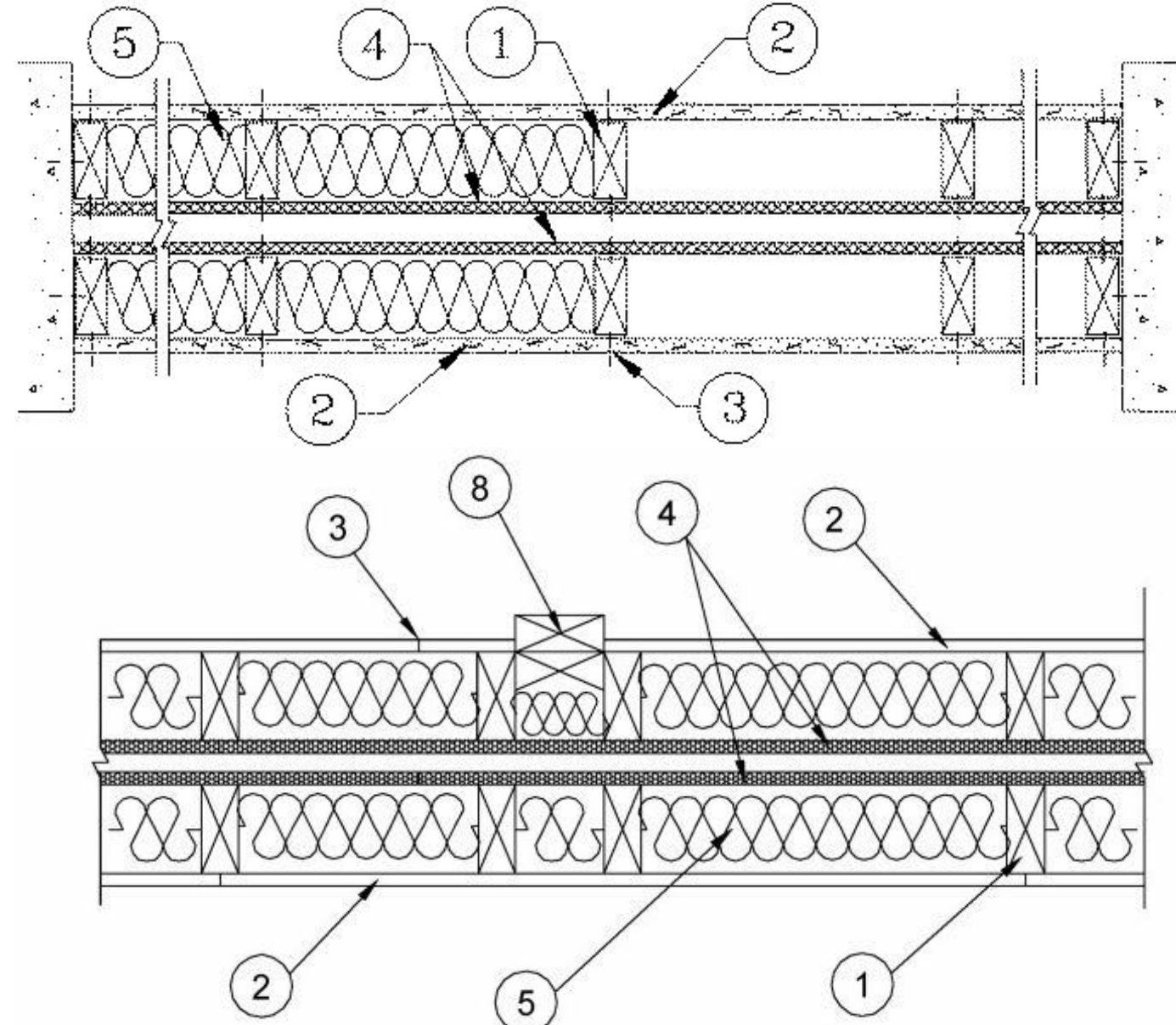


C:\Users\jerry\Documents\108089\_Annotation\_safety.vrt  
5/12/2019 9:47:44 AM

DESIGN NO. U341



HORIZONTAL SECTION

Wood Studs — Nom 2 by 4 in., spaced 24 in. OC max. Cross braced at mid-height and effectively sheathed at top and bottom of wall. No min. air space between stud rows except to accommodate attachment of sheathing, where required. See Items 4  
Gypsum Board\* — Any 5/8 in. thick UL Classified Gypsum Board that is eligible for use in Design Nos. L501, G512 or U305. Nom 5/8 in. thick 4 ft wide. Gypsum board or lath applied horizontally or vertically, unless specified below, and nailed to studs and bearing plates 7 in. OC with 6d cement coated nails, 1-7/8 in. long, 0.0915 in. shank diam and 1/4 in. diam head. As an alternate, No. 6 bugle head drywall screws, 1-7/8 in. long, may be substituted for the 6d cement coated nails.  
When Steel Framing Members\* (Item 6-6B) are used, wallboard attached to furring channels with 1 in. long Type S bugle-head steel screws spaced 12 in. OC.

1. When used in widths other than 48 in., gypsum board to be installed horizontally and 5.

2. ACADIA DRYWALL SUPPLIES LTD (View Classification) — CNKX.R25370  
AMERICAN GYPSUM CO (View Classification) — CNKX.R14196  
BEIJING NEW BUILDING MATERIALS PUBLIC LTD CO (View Classification) — CNKX.R19374  
CERTAINTED GYPSUM INC (View Classification) — CNKX.R3660  
CGC INC (View Classification) — CNKX.R19751  
CONTINENTAL BUILDING PRODUCTS OPERATING CO, L L C (View Classification) — CNKX.R18482  
GEORGIA-PACIFIC GYPSUM L L C (View Classification) — CNKX.R2717  
LOADMASTER SYSTEMS INC (View Classification) — CNKX.R11809  
NATIONAL GYPSUM CO (View Classification) — CNKX.R3501  
PABCO BUILDING PRODUCTS L L C, DBA PABCO GYPSUM (View Classification) — CNKX.R7094  
PANEL REY S A (View Classification) — CNKX.R21796  
SIAM GYPSUM INDUSTRY (SARABURI) CO LTD (View Classification) — CNKX.R19262  
THAI GYPSUM PRODUCTS PCL (View Classification) — CNKX.R27517  
UNITED STATES GYPSUM CO (View Classification) — CNKX.R1319  
USG BORAL ZAWAWI DRYWALL L L C SFZ (View Classification) — CNKX.R39438  
USG MEXICO S A DE C V (View Classification) — CNKX.R16099

2A. Gypsum Board\* — (As an alternate to Item 2, not shown) — Nominal 5/8 in. thick, 4 ft wide panels, applied vertically to studs and bearing plates on one side of the assembly with 1-5/8 in. long Type S screws spaced 12 in. OC at perimeter of panels and 8 in. OC in the field. Horizontal joints of vertically applied panels need not be backed by studs. Panel joints covered with paper tape and two layers of joint compound. Screwsheads covered with two layers of joint compound. Batts and Blankets placed in stud cavity as described in Item 5C. Not evaluated for use with Steel Framing Members, Furring Channels or Fiber, Sprayed.  
PABCO BUILDING PRODUCTS L L C, DBA PABCO GYPSUM — Type QuietRock QR-530 (finish rating 23 min).

2B. Gypsum Board\* — (As an alternate to Item 2, not shown) — Any 5/8 in. thick gypsum panels that are eligible for use in Design Nos. L501, G512 or U305, supplied by the Classified companies listed below shown in the Gypsum Board\* (CNKX) category. Applied horizontally or vertically and attached to studs and bearing plates with 1-1/4 in. long Type W coarse thread gypsum panel steel screws spaced a max 8 in. OC, with last screw 1 in. from edge of board. When used in widths other than 48 in., gypsum board to be installed horizontally.  
UNITED STATES GYPSUM CO  
USG MEXICO S A DE C V

2C. Gypsum Board\* — (As an alternate to Item 2, Not Shown) — 5/8 in. thick gypsum panels applied horizontally or vertically and attached to studs and bearing plates with 1-1/4 in. long Type W coarse thread gypsum panel steel screws spaced a max 8 in. OC, with last screw 1 in. from edge of board. When used in widths other than 48 in., gypsum board to be installed horizontally.

AMERICAN GYPSUM CO — Types AGX-1, M-Glass, AG-C  
CERTAINTED GYPSUM INC — Type C, Type X or Type X-1  
THAI GYPSUM PRODUCTS PCL — Type C or Type X

2D. Gypsum Board\* — (As an alternate to Items 2, 2A, 2B and 2C) — 5/8 in. thick gypsum panels, with square edges, applied either horizontally or vertically. Gypsum panels fastened to framing with 1-1/4 in. long Type W coarse thread gypsum panel steel screws spaced a max 8 in. OC, with last 2 screws 1 and 4 in. from edge of board or nailed as described in Item 2. When used in widths of other than 48 in., gypsum boards are to be installed horizontally.  
GEORGIA-PACIFIC GYPSUM L L C — GreenGlass Type X, Type DGG.

2E. Gypsum Board\* — (As an alternate to Items 2 through 2D) — 5/8 in. thick, 4 ft. wide, paper surfaced applied vertically only and secured as described in Item 2.  
GEORGIA-PACIFIC GYPSUM L L C — Type X ComfortGuard Sound Deadening Gypsum Board.

2F. Gypsum Board\* — (As an alternate to Items 2 through 2E) — Installed as described in Item 2. 5/8 in. thick, 4 ft. wide, paper surfaced, applied vertically only and fastened to the studs and plates with 6d cement coated nails 1-7/8 in. long, 0.0915 in. shank diam and 1/4 in. diam heads, 7 in. OC. Not for use with item #6.  
NATIONAL GYPSUM CO — SoundBreak XP Type X Gypsum Board

2G. Gypsum Board\* — (As an alternate to Items 2 through 2F) — Nominal 5/8 in. thick, 4 ft wide panels, applied vertically and secured as described in Item 2.  
PABCO BUILDING PRODUCTS L L C, DBA PABCO GYPSUM — Types QuietRock ES.

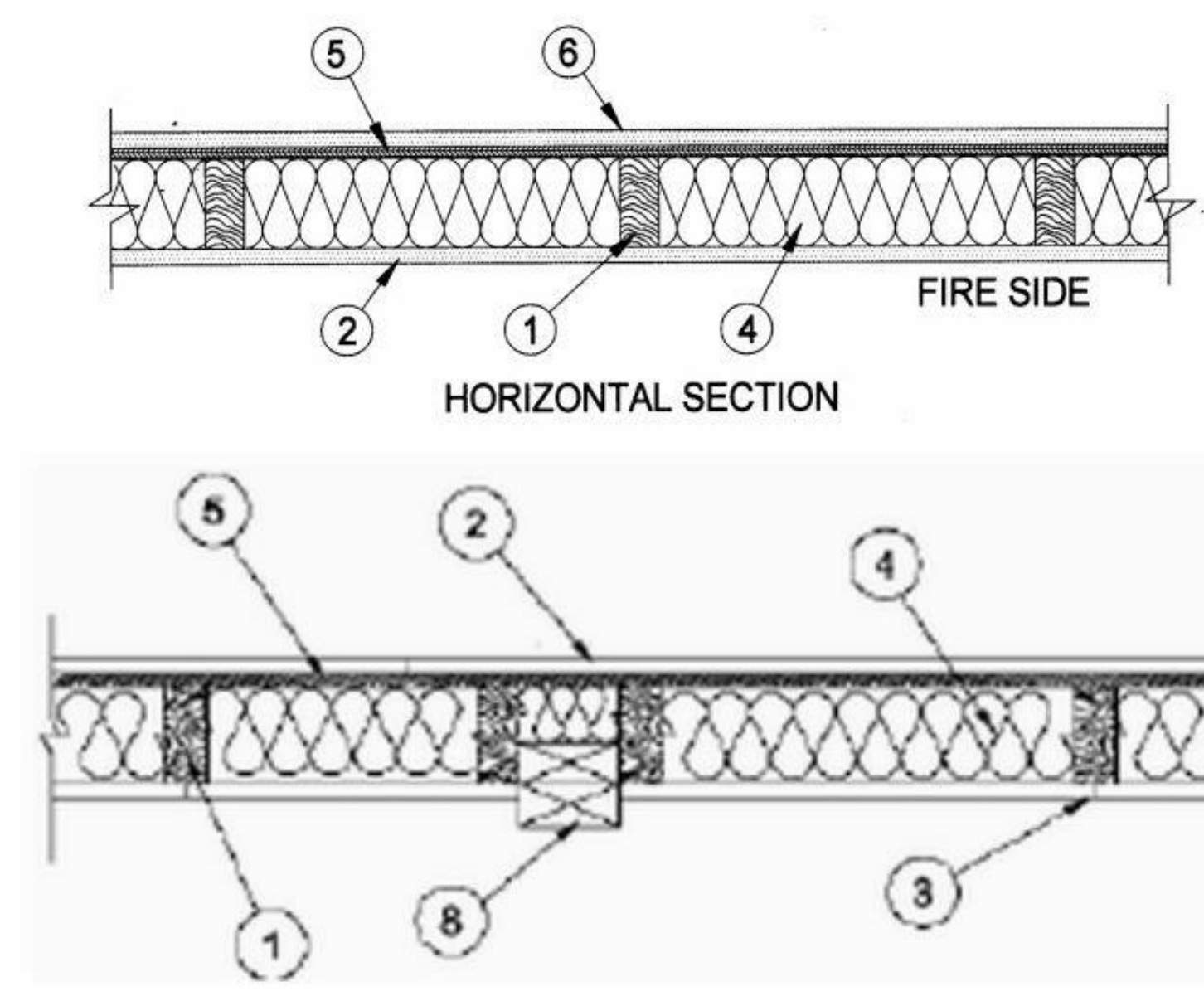
2H. Gypsum Board\* — (As an alternate to Items 2 through 2G) — Installed as described in Item 2. 5/8 in. thick, 4 ft. wide, papersurfaced, applied vertically only and fastened to the studs and plates with 6d cement coated nails 1-7/8 in. long, 0.0915 in. shank diam and 1/4 in. diam heads, 7 in. OC. Not for use with item #6.  
CERTAINTED GYPSUM INC — Type SilentFX

2I. Wall and Partition Facings and Accessories\* — (As an alternate to Items 2 through 2H) — Nominal 5/8 in. thick, 4 ft wide panels, applied vertically and secured as described in Item 2.  
PABCO BUILDING PRODUCTS L L C, DBA PABCO GYPSUM — Type QuietRock 527.

2J. Gypsum Board\* — (As an alternate to 5/8 in. Type FSW in Item 2) — 2 layers nom. 5/16 in. thick gypsum panels applied vertically or horizontally. Horizontal joints on the same side need not be staggered. Inner layer attached with fasteners, as described in Item 2, spaced 24 in. OC. Outer layer attached per Item 2.  
NATIONAL GYPSUM CO — Type FSW.

2K. Gypsum Board\* — (As an alternate to Item 2) — 5/8 in. thick gypsum panels, with beveled, square, or tapered edges, applied either horizontally or vertically. Gypsum panels fastened to framing with 1-1/4 in. long Type W coarse thread gypsum panel steel screws spaced a maximum 10 in. OC with the last two screws 4 and 1 in. from the edges of the board. When used in widths other than 48 in., gypsum panels are to be installed horizontally.  
CONTINENTAL BUILDING PRODUCTS OPERATING CO, L L C — Type LGFC6A (finish rating 21 min), Type LGFC02A, Type LGFC-C/A, Type LGFC-WD, Type LGLLX

DESIGN NO. U356



(Exposed to Fire on Interior Face Only)

Bearing Wall Rating — 1 Hr  
Finish Rating — 23 Min or 25 Min (See Item 2C)

This design was evaluated using a load design method other than the Limit States Design Method (e.g., Working Stress Design Method). For jurisdictions employing the Limit States Design Method, such as Canada, a load restriction factor shall be used — See Guide BXUV or BXUV7

\* Indicates such products shall bear the UL or cUL Certification Mark for jurisdictions employing the UL or cUL Certification (such as Canada), respectively.

1. Wood Studs — Nom 2 by 4 in. spaced 16 in. OC with two 2 by 4 in. top and one 2 by 4 in. bottom plates. Studs laterally-braced by wood structural panel sheathing (Item 5). When Mineral and Fiber Boards\* (Item 5A) are considered as bracing for the studs, the load is restricted to 76% of allowable axial load. Walls effectively fire stopped at top and bottom of wall.  
2. Gypsum Board\* — Any 5/8 in. thick UL Classified Gypsum Board that is eligible for use in Design Nos. L501, G512 or U305. Nom 5/8 in. thick, 4 ft wide, applied vertically and nailed to studs and bearing plates 7 in. OC with 6d cement-coated nails, 1-7/8 in. long with 1/4 in. diam head.  
When Item 7, Steel Framing Members\*, is used, gypsum panels attached to furring channels with 1 in. long Type S bugle-head steel screws spaced 12 in. OC.

When Item 7A, 7B, or 7C Steel Framing Members\*, is used, two layers of gypsum panels attached to furring channels. Base layer attached to furring channels with 1 in. long Type S bugle-head steel screws spaced 12 in. OC. Face layer attached to furring channels with 1-5/8 in. long Type S bugle-head steel screws spaced 12 in. OC. All joints in face layers staggered with joints in base layers.

ACADIA DRYWALL SUPPLIES LTD (View Classification) — CNKX.R25370  
AMERICAN GYPSUM CO (View Classification) — CNKX.R14196  
BEIJING NEW BUILDING MATERIALS PUBLIC LTD CO (View Classification) — CNKX.R19374  
CERTAINTED GYPSUM INC (View Classification) — CNKX.R3660  
CGC INC (View Classification) — CNKX.R19751  
CONTINENTAL BUILDING PRODUCTS OPERATING CO, L L C (View Classification) — CNKX.R18482  
GEORGIA-PACIFIC GYPSUM L L C (View Classification) — CNKX.R2717  
LOADMASTER SYSTEMS INC (View Classification) — CNKX.R11809  
NATIONAL GYPSUM CO (View Classification) — CNKX.R3501  
PABCO BUILDING PRODUCTS L L C, DBA PABCO GYPSUM (View Classification) — CNKX.R7094  
PANEL REY S A (View Classification) — CNKX.R21796  
SIAM GYPSUM INDUSTRY (SARABURI) CO LTD (View Classification) — CNKX.R19262  
THAI GYPSUM PRODUCTS PCL (View Classification) — CNKX.R27517  
UNITED STATES GYPSUM CO (View Classification) — CNKX.R1319  
USG MEXICO S A DE C V (View Classification) — CNKX.R16099

2A. Gypsum Board\* — (As an alternate to Item 2, not shown) - Any 5/8 in. thick 4 ft wide gypsum panels that are eligible for use in Design Nos. L501, G512 or U305, supplied by the Classified Companies listed below shown in the Gypsum Board\* (CNKX) category. Applied vertically and attached to studs and bearing plates with 1-1/4 in. long Type W coarse thread gypsum panel steel screws spaced a max 8 in. OC, with last screw 1 in. from edge of board.

UNITED STATES GYPSUM CO  
USG MEXICO S A DE C V

2B. Gypsum Board\* — (As an alternate to Item 2, not shown) - 5/8 in. thick 4 ft wide gypsum panels applied vertically and attached to studs and bearing plates with 1-1/4 in. long Type W coarse thread gypsum panel steel screws spaced a max 8 in. OC, with last screw 1 in. from edge of board.

ACADIA DRYWALL SUPPLIES LTD — Type X, 5/8 Type X, Type Blueglass Exterior Sheathing  
AMERICAN GYPSUM CO — Types AGX-1, M-Glass, AG-C  
CERTAINTED GYPSUM INC — Type C, Type X or Type X-1  
GEORGIA-PACIFIC GYPSUM L L C — Type X, Veneer Plaster Base-Type X, Water Rated-Type X, Sheathing Type-X, Soffit-Type X, Type X ComfortGuard Sound Deadening Gypsum Board.  
PABCO BUILDING PRODUCTS L L C, DBA PABCO GYPSUM — Types PG-11, PGS-WRS.  
THAI GYPSUM PRODUCTS PCL — Type C or Type X

2C. Gypsum Board\* — (As an alternate to Item 2, not shown) - For Use with Item 5A only - 5/8 in. thick 4 ft wide gypsum panels applied horizontally and attached to studs and bearing plates with 1-1/4 in. long Type W coarse thread gypsum panel steel screws spaced a max 8 in. OC, with last screws 1 in. and 4 in. from edges of board. Finish Rating is 25 min.

ACADIA DRYWALL SUPPLIES LTD — 5/8 Type X, Type Blueglass Exterior Sheathing  
GEORGIA-PACIFIC GYPSUM L L C — Type X, Veneer Plaster Base-Type X, Water Rated-Type X, Sheathing Type-X, Soffit-Type X  
PABCO BUILDING PRODUCTS L L C, DBA PABCO GYPSUM — Types PG-11, PGS-WRS

2D. Gypsum Board\* — (As an alternate to Item 2) - Not to be used with item 7. 5/8 in. thick, 4 ft. wide, paper surfaced, applied vertically only and fastened to the studs and plates with 6d cement coated nails 1-7/8 in. long, 0.0915 in. shank diam and 1/4 in. diam heads, 7 in. OC.  
NATIONAL GYPSUM CO — SoundBreak XP Type X Gypsum Board

2E. Gypsum Board\* — (As an alternate to Items 2 through 2D) — Nominal 5/8 in. thick, 4 ft wide panels, secured as described in Item 2.

2. PABCO BUILDING PRODUCTS L L C, DBA PABCO GYPSUM — Type QuietRock ES.

2F. Gypsum Board\* — (As an alternate to Item 2) - Not to be used with item 7. 5/8 in. thick, 4 ft. wide, paper surfaced, applied vertically only and fastened to the studs and plates with 6d cement coated nails 1-7/8 in. long, 0.0915 in. shank diam and 1/4 in. diam heads, 7 in. OC.  
CERTAINTED GYPSUM INC — Type SilentFX

2G. Wall and Partition Facings and Accessories\* — (As an alternate to Items 2 through 2F) — Nominal 5/8 in. thick, 4 ft wide panels, secured as described in Item 2.  
PABCO BUILDING PRODUCTS L L C, DBA PABCO GYPSUM — Type QuietRock 527.

2H. Gypsum Board\* — (As an alternate to Item 2) — 5/8 in. thick gypsum panels, with beveled, square, or tapered edges, applied either horizontally or vertically. Gypsum panels fastened to framing with 1-1/4 in. long Type W coarse thread gypsum panel steel screws spaced a maximum 10 in. OC with the last two screws 4 and 1 in. from the edges of the board. When used in widths other than 48 in., gypsum panels are to be installed horizontally.  
CONTINENTAL BUILDING PRODUCTS OPERATING CO, L L C — Type LGFC6A (finish rating 21 min), Type LGFC02A, Type LGFC-C/A, Type LGFC-WD, Type LGLLX

2I. Gypsum Board\* — (As an alternate to Item 2) — 5/8 in. thick gypsum panels, with beveled, square, or tapered edges, applied either horizontally or vertically. Gypsum panels fastened to framing with 1-1/4 in. long Type W coarse thread gypsum panel steel screws spaced a max 8 in. OC, with last screw 1 in. from edge of board. When used in widths of other than 48 in., gypsum boards are to be installed horizontally.  
AMERICAN GYPSUM CO — Types AGX-1 (finish rating 25 min.), M-Glass (finish rating 25 min.), Type AG-C (finish rating 25 min.)

3. Joints and Fastener Heads — (Not Shown) — Gypsum board joints covered with tape and joint compound. Fastener heads covered with joint compound.  
4. Batts and Blankets\* — Mineral fiber or glass fiber insulation, 3-1/2 in. thick, pressure fit to fill wall cavities between studs and plates. Mineral fiber insulation to be unfaced and to have a min density of 3 pcf. Glass fiber insulation to be faced with aluminum foil or kraft paper and to have a min density of 0.9 pcf (min R-13 thermal insulation rating). See Batts and Blankets\* (BKNV) Category in the Building Materials Directory and Batts and Blankets\* (BZJZ) Category in the Fire Resistance Directory for names of Classified Companies.

4A. Fiber, Sprayed\* — As an alternate to Batts and Blankets (Item 4) — Spray applied cellulose material. The fiber is applied with water to completely fill the enclosed cavity in accordance with the application instructions supplied with the product with a nominal dry density of 2.7 lb/ft3. Alternate Application Method: The fiber is applied without water or adhesive at a nominal dry density of 3.5 lb/ft3, in accordance with the application instructions supplied with the product. U S GREENFIBER L L C — INS735 & INS745 for use with wet or dry application. INS510LD, INS515LD, INS541LD, INS735, INS745, INS765LD, and INS770LD are to be used for dry application only.

4B. Fiber, Sprayed\* — As an alternate to Item 4 and 4A — Spray applied cellulose material. The fiber is applied with water to completely fill the enclosed cavity in accordance with the application instructions supplied with the product. Nominal dry density of 4.58 lb/ft 3.  
NU-WOOL CO INC — Cellulose Insulation

4C. Fiber, Sprayed\* — As an alternate to Batts and Blankets (Item 4) - Spray applied cellulose fiber. The fiber is applied with water to completely fill the enclosed cavity in accordance with the application instructions supplied with the product. The minimum dry density shall be 4.30 lbs/ft3.  
INTERNATIONAL CELLULOSE CORP — Celbar-RL

5. Wood Structural Panel Sheathing — Min 7/16 in. thick, 4 ft wide wood structural panels, min grade "C-D" or "Sheathing". Installed with long dimension of sheet (strength axis) or face grain of plywood parallel with or perpendicular to studs. Vertical joints centered on studs. Horizontal joints backed with nom 2 by 4 in. wood blocking. Attached to studs on exterior side of wall with 6d cement coated box nails spaced 6 in. OC at perimeter of panels and 12 in. OC along interior studs.

5A. Mineral and Fiber Boards\* — As an alternate to Item 5 - Min 1/2 in. thick, 4 ft wide sheathing, installed vertically to studs. Vertical joints centered on studs. Horizontal joints backed with nom 2 by 4 in. wood blocking. Attached to studs on exterior side of wall with 1-1/2 in. long galvanized roofing nails spaced 6 in. OC at perimeter of panels and 12 in. OC along interior studs. As an option a weather resistive barrier may be applied over the Mineral and Fiber Boards.

6. Exterior Facings — Installed in accordance with the manufacturer's installation instructions. One of the following exterior facings is to be applied over the sheathing:

A. Vinyl Siding — Molded Plastic\* — Contoured rigid vinyl siding having a flame spread value of 20 or less. See Molded Plastic (BTAT) category in the Building Materials Directory for names of manufacturers.  
B. Particle Board Siding — Hardboard exterior sidings including patterned panel or lap siding.  
C. Wood Structural Panel or Lap Siding — APA Rated Siding, Exterior, plywood, OSB or composite panels with veneer faces and structural wood core, per PS 1 or APA Standard PRF-10B, including textured, rough sawn, medium density overlay, brushed, grooved and lap siding.  
D. Cementitious Stucco — Portland cement or synthetic stucco systems with self-curing metal lath or adhesive base coat. Thickness from 3/8 to 3/4 in., depending on system.  
E. Brick Veneer — Any type on nom 4 in. wide brick veneer. When brick veneer is used, the rating is applicable with exposure on either face. Brick veneer fastened with corrugated metal wall ties attached over sheathing to wood studs with 8d nail per tie; ties spaced not more than each third course of brick and max 32 in. OC horizontally. One in. air space provided between brick veneer and sheathing.

F. Exterior insulation and Finish System (EIFS) — Nom 1 in. Foamed Plastic\* insulation bearing the UL Classification Marking, attached over sheathing and finished with coating system, or Portland cement or synthetic stucco systems, in accordance with manufacturer's instructions. See Foamed Plastic (BRYX and COWW) categories for names of Classified companies.  
G. Siding — Aluminum or steel siding attached over sheathing to studs.

H. Fiber-Cement Siding — Fiber-cement exterior sidings including smooth and patterned panel or lap siding.  
I. Wall and Partition Facings and Accessories\* — Stone veneer is mortar bonded to a lath, scratch coat and water resistant barrier applied to sheathing, installed in accordance with the manufacturer's installation instructions, and meeting the requirements of local code agencies.  
ELDORADO STONE OPERATIONS L L C — Type Eldorado Stone

6A. Building Units\* — As an alternate to Exterior Facing Item 6 —, Insulated steel panels, 12 through 42 in. wide. Attached over sheathing through retainer clips to studs or support steel with No. 14 hex head self-tapping screws located at each joint in the concealed lip of the units and spaced in accordance with the structural design requirements.  
KINGSPAN INSULATED PANELS INC — Types 200, 300, 400, 900, or KS series, 2 through 6 in. thickness; CWP-V, H, 2 through 3 in. nominal thickness or Designwall 2000 or Designwall 4000, 2 and 3 in. nominal thickness.

7. Steel Framing Members\* — (Optional, Not Shown) — Furring channels and Steel Framing Members as described below:  
a. Furring Channels — Formed of No. 25 MSG galv steel, 2-9/16 in. or 2-23/32 in. wide by 7/8 in. deep, spaced 24 in. OC perpendicular to studs. Channels secured to studs as described in Item b. Ends of adjoining channels are overlapped 6 in. and tied together with double strand of No. 18 SWG galv steel wire near each end of overlap. As an alternate, ends of adjoining channels may be overlapped 6 in. and secured together with two self-tapping #6 framing screws, min. 7/16 in. long at the midpoint of the overlap, with one screw on each flange of the channel. Gypsum board attached to furring channels as described in Item 2.

b. Steel Framing Members\* — Used to attach furring channels (Item 7A) to studs. Clips spaced 48 in. OC, and secured to studs with No. 8 x 2-1/2 in. coarse drywall screw through the center hole. Furring channels are friction fitted into clips. RSIC-1 clip for use with 2-9/16 in. wide furring channels. RSIC-1 (2.75) clip for use with 2-23/32 in. wide furring channels.  
PAC INTERNATIONAL L L C — Types RSIC-1, RSIC-1 (2.75).

7A. Steel Framing Members\* — (Optional, Not Shown) — Furring channels and Steel Framing Members as described below:

a. Furring Channels — Formed of No. 25 MSG galv steel, spaced 24 in. OC perpendicular to studs. Channels secured to studs as described in Item b. Ends of adjoining channels are overlapped 6 in. and tied together with double strand of No. 18 SWG galv steel wire near each end of overlap. Two layers of gypsum board attached to furring channels as described in Item 2.

b. Steel Framing Members\* — Used to attach furring channels (Item 7Aa) to interior side of studs. Clips spaced 48 in. OC, and secured to studs with two No. 8 x 2-1/2 in. coarse drywall screws, one through the hole at each end of the clip. Furring channels are friction fitted into clips.  
KINETICS NOISE CONTROL INC — Type Isomax.

7B. Steel Framing Members\* — (Optional, Not Shown) — Furring channels and Steel Framing Members as described below:

a. Furring Channels — Formed of No. 25 MSG galv steel, 2-3/8 in. wide by 7/8 in. deep, spaced 24 in. OC perpendicular to studs. Channels secured to studs as described in Item b. Ends of adjoining channels are overlapped 6 in. and tied together with double strand of No. 18 SWG galv steel wire near each end of overlap. As an alternate, ends of adjoining channels may be overlapped 6 in. and secured together with two self-tapping #6 framing screws, min. 7/16 in. long at the midpoint of the overlap, with one screw on each flange of the channel. Gypsum board attached to furring channels as described in Item 2.

b. Steel Framing Members\* — Used to attach furring channels (Item a) to studs. Clips spaced 48 in. OC. Genie clips secured to studs with No. 8 x 1-1/2 in. coarse drywall screw through the center hole. Furring channels are friction fitted into clips.  
PLITEQC INC — Type Genie Clip

7C. Steel Framing Members\* — (Optional, Not Shown) — Furring channels and resilient sound isolation clip as described below:

a. Furring Channels — Formed of No. 25 MSG galv steel. Spaced 24 in. OC perpendicular to studs. Channels secured to studs as described in Item b. Ends of adjoining channels overlapped 6 in. and secured together with four self-tapping No. 8x1/2 Self Drilling screws (2 per side 1 in. and 4 in. from overlap edge). Gypsum board attached to furring channels as described in Item 2. Side joint furring channels shall be attached to studs with RESILMOUNT Sound Isolation Clips - Type A237R located approximately 2 in. from each end of length of channel. Both Gypsum Boards at side joints fastened into channel with screws spaced 8 in. OC, approximately 1/2 in. from joint edge.

b. Steel Framing Members\* — Resilient sound isolation clip used to attach furring channels (Item 7Ca) to studs. Clips spaced 16 in. OC, and secured to studs with No. 10 x 2-1/2 in. coarse drywall screw through the center hole. Furring channels are friction fitted into clips.  
STUDDO BUILDING SYSTEMS — RESILMOUNT Sound Isolation Clips - Type A237R

8. Non-Bearing Wall Partition Intersection — (Optional) — Two nominal 2 by 4 in. stud or nominal 2 by 6 in. stud nailed together with two 3in. long 10d nails spaced a max. 16 in. OC, vertically and fastened to one side of the minimum 2 by 4 in. stud with 3 in. long 10d nails spaced a max 16 in. OC, vertically. Intersection between partition wood studs to be flush with the 2 by 4 in. studs. The wall partition wood studs are to be framed by with a second 2 by 4 in. wood stud fastened with 3 in. long 10d nails spaced a max. 16 in. OC, vertically. Maximum one non-bearing wall partition intersection per stud cavity. Non-bearing wall partition stud depth shall be at a minimum equal to the depth of the bearing wall.

\*Indicates such products shall bear the UL or cUL Certification Mark for jurisdictions employing the UL or cUL Certification (such as Canada), respectively.



MBI COMPANIES INC.  
100 COLONIAL CENTER SUITE 230  
LAKE MARY, FL 32746  
PHONE: (407) 585-0330  
FAX: (407) 585-0336  
WEB: mbicompanies.com

ARCHITECTURE NO.: AA26000828  
INTERIORS NO.: IB26000665

CONSULTANT

SEAL

FOR REFERENCE ONLY

COPYRIGHT © MBI COMPANIES INC. 2019  
THE DESIGN PROFESSIONAL DENIES ANY AND ALL RESPONSIBILITY AND LIABILITY FOR PROBLEMS WHICH ARISE FROM FAILURE TO FOLLOW THESE PLANS, SPECIFICATIONS AND THE DESIGN INTENT THEY CONVEY, OR PROBLEMS WHICH ARISE FROM OTHERS FAILURE TO OBTAIN AND/OR FOLLOW THE DESIGN PROFESSIONAL'S GUIDANCE WITH RESPECT TO ANY ERRORS, OMISSIONS, INCONSISTENCIES, AMBIGUITIES OR CONFLICTS WHICH ARE ALLEGED.

PROJECT INFORMATION

PROJECT:

WESTWOOD AT WINTER HAVEN APARTMENTS

PROJECT ADDRESS:

Avenue G  
Winter Haven, FL 36801  
HUD# 067-35554

PROJECT NO.: 180888

ACTIVE DESIGN PHASE

☐ FOR REVIEW ONLY  
☐ FOR PERMITTING ONLY  
☐ SCHEMATIC DESIGN  
☐ DESIGN DEVELOPMENT  
☐ CONSTRUCTION BIDDING  
☒ CONSTRUCTION DOCUMENTS  
☐ AS-BUILT RECORD SET

REVISION INFORMATION

NO.	DATE	DESCRIPTION

KEY PLAN

SHEET INFORMATION

SHEET ISSUED: 03-25-19  
DESIGNED BY: MES  
DRAWN BY: AV  
REVIEWED BY: CMG  
SHEET TITLE:

UL RATINGS

SHEET NO.:

A004