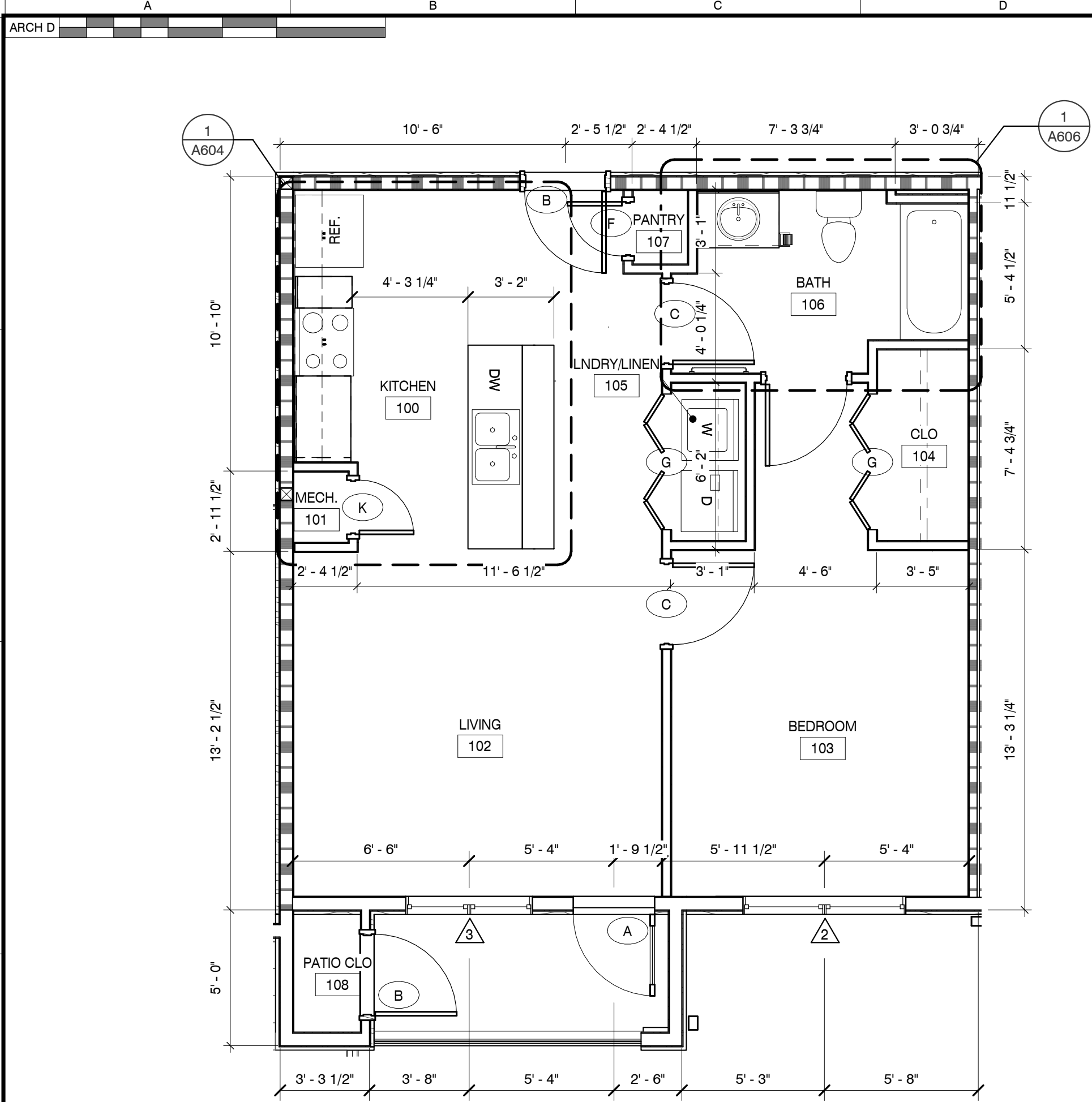
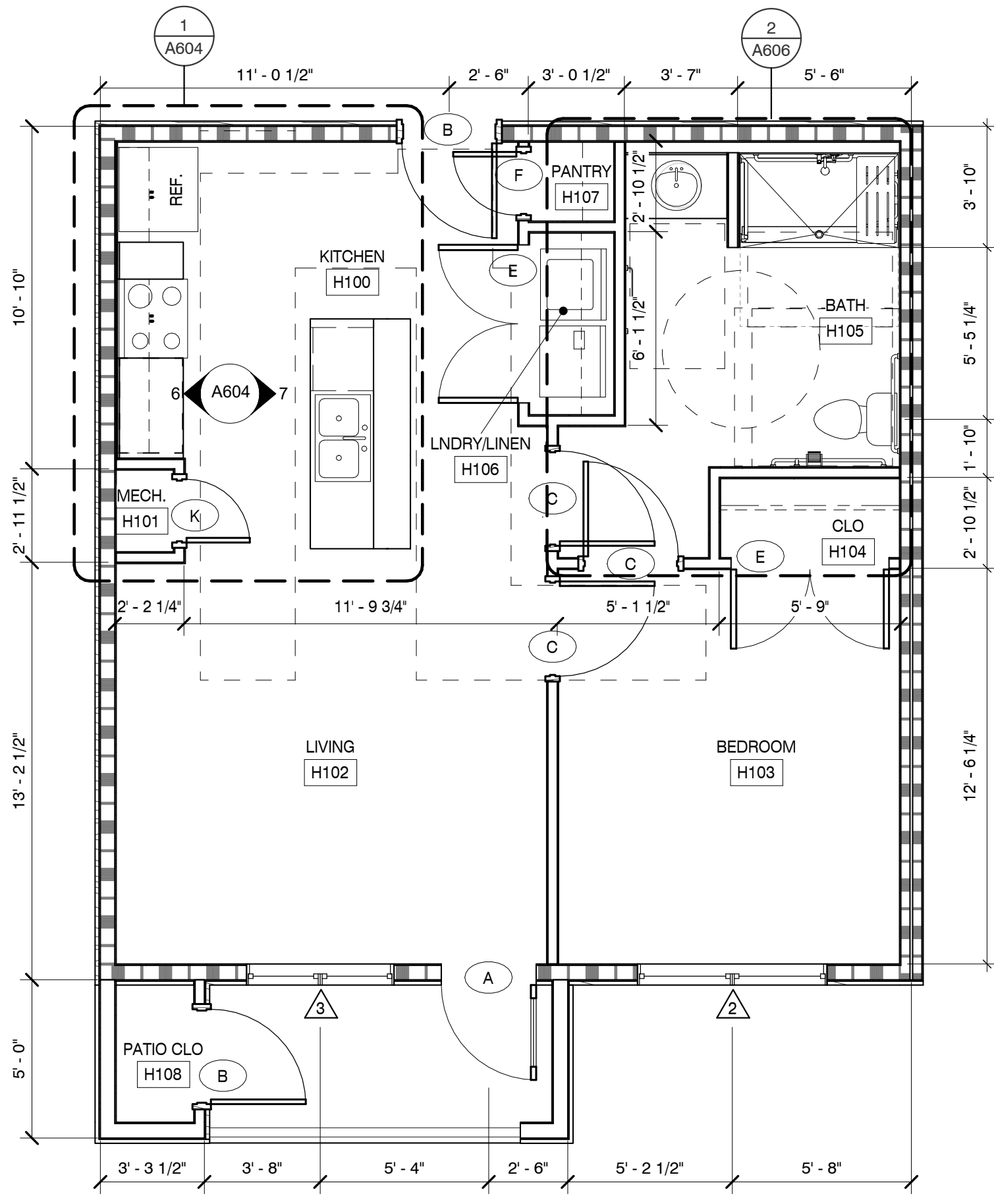


C:\Users\ashley\Documents\190889\_Annotation\_ashley.rvt  
2/1/2025 5:12:51 PM



TYPICAL 1 BEDROOM UNIT

SCALE: 1/4" = 1'-0"

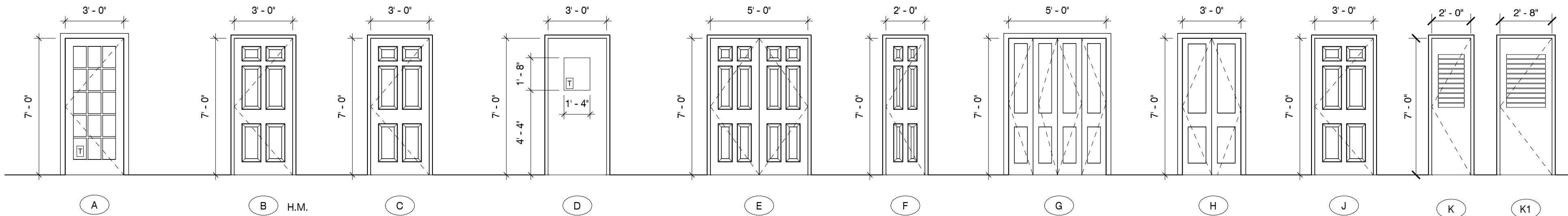


1 BEDROOM UNIT - TYPE "A"

SCALE: 1/4" = 1'-0"

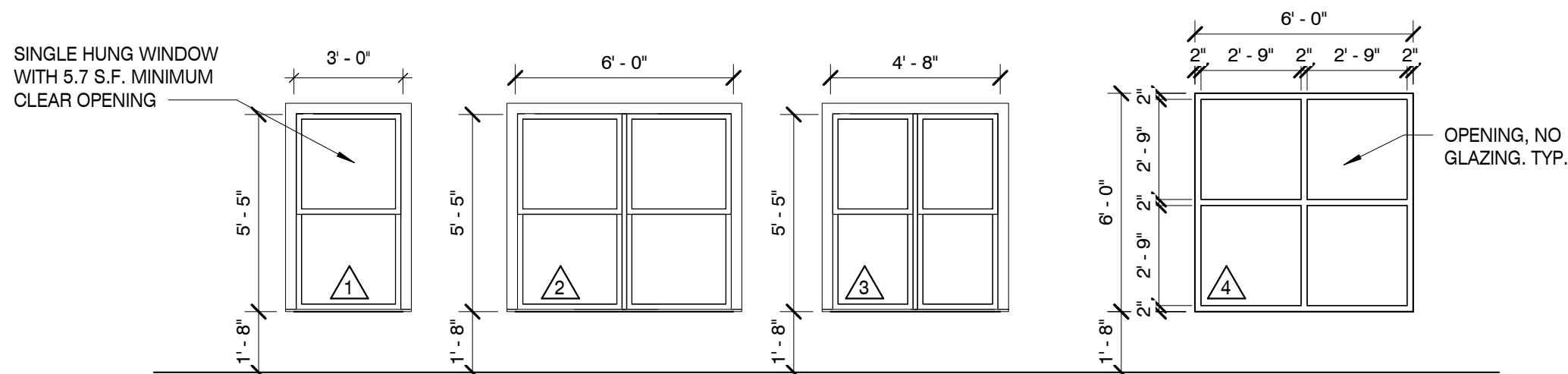
\*FAIR HOUSING PATH DENOTED WITH DASHED LINE  
TYPE A UNIT - PROVIDE TUB IN UNIT UNLESS MARKED FOR SHOWER UNIT, REF SHEET CVR.3

DOOR SCHEDULE															
DOORS								FRAMES				DETAILS			
MARK	D-MATL	WIDTH	PANELS	HEIGHT	THICK	FINISH	LABEL	F-TYPE	F-MATL	F-FINISH	HEAD	JAMB	T-HOLD	H-WARE	REMARKS
A	GLASS	3'-0"		7'-0"	2"	PAINTED	--	1	PREHUNG	PAINTED	10/A2.1	9/A2.1	13/A2.1	REF SPEC	GLASS IS TEMPERED
B	H. METAL	3'-0"		7'-0"	1 3/4"	PAINTED	60 MIN.	1	H. METAL	PREFINISHED	2/A2.1	6/A2.1	13/A2.1	REF SPEC	
C	MASONITE	3'-0"	SINGLE	7'-0"	1 3/4"	PAINTED	--	1	PREHUNG	PAINTED	4/A2.1	3/A2.1	13/A2.1	REF SPEC	
D	MASONITE	3'-0"	SINGLE	7'-0"	1 3/4"	PAINTED	--	1	PREHUNG	PAINTED	4/A2.1	3/A2.1	13/A2.1	REF SPEC	GLASS IS TEMPERED
E	MASONITE	2'-6"		7'-0"	1 3/4"	PAINTED	--	1	PREHUNG	PAINTED	4/A2.1	3/A2.1	13/A2.1	REF SPEC	
F	MASONITE	2'-0"		7'-0"	1 3/4"	PAINTED	--	1	PREHUNG	PAINTED	4/A2.1	3/A2.1	13/A2.1	REF SPEC	
G	MASONITE	5'-0"		7'-0"	1 1/2"	PAINTED	--	1	PREHUNG	PAINTED	4/A2.1	3/A2.1	13/A2.1	REF SPEC	
H	MASONITE	3'-0"	BIFOLD	7'-0"	1 1/2"	PAINTED	--	1	PREHUNG	PAINTED	9/A2.1	11/A2.1	12/A2.1	REF SPEC	
J	MASONITE	3'-0"		7'-0"	1 3/4"	PAINTED	--	1	PREHUNG	PAINTED	4/A2.1	3/A2.1	13/A2.1	REF SPEC	
K	MASONITE	2'-0"		7'-0"	1 3/4"	PAINTED	--	1	PREHUNG	PAINTED	4/A2.1	3/A2.1	13/A2.1	REF SPEC	
K1	MASONITE	2'-8"		7'-0"	1 3/4"	PAINTED	--	1	PREHUNG	PAINTED	4/A2.1	3/A2.1	13/A2.1	REF SPEC	
Grand total: 19															



DOOR AND FRAME ELEVATIONS

SCALE: 1/4" = 1'-0"



WINDOW ELEVATIONS

SCALE: 1/4" = 1'-0"

WINDOW SCHEDULE							
MARK	WIDTH	HEIGHT	MATERIAL	FINISH	HEAD	JAMB	COMMENTS
1	3'-0"	5'-6"	VINYL	PREFINISHED	7/A201	6/A201	
2	6'-0"	5'-6"					
3	4'-8"	5'-6"					
4	6'-0"	6'-0"	ALUM.	PREFINISHED	7/A201	6/A201	

## GENERAL NOTES

- SEE ADDRESSING SHEET FOR FAIR HOUSING UNIT LOCATIONS AND A6 SHEETS FOR DETAILS. FOR CLUBHOUSE REFERENCE SHEET A8.8 FOR ACCESSIBILITY DETAILS.
- ALL GROUND LEVEL UNITS ARE TO BE BUILT AS TYPE A&B UNLESS OTHERWISE NOTED. (FAIR HOUSING)
- ALL DETAILS OF CONSTRUCTION SHALL CONFORM WITH THE 6TH EDITION OF THE 2017 FBC.
- ALL INTERIOR DIMENSIONS ARE TO FACE OF STUD UNLESS OTHERWISE NOTED. "CLEAR" DENOTES FINISH TO FINISH DIMENSIONS.
- ALL EXTERIOR DIMENSIONS ARE TO FACE OF FOUNDATION WALL, UNLESS OTHERWISE NOTED
- MOUNT FIRE EXTINGUISHERS LISTED IN SPECIFICATIONS AT LOCATIONS SHOWN AND/OR DIRECTED BY FIRE DEPARTMENT/CODE OFFICIALS.
- FURNISH AND INSTALL SOLID BACKING FOR ALL FIXTURES AND EQUIPMENT.
- PROVIDE WATER RESISTANT GYP. BD. AT ALL WET LOCATIONS.
- PROVIDE WIRE SHELF WITH HANGER ROD IN ALL CLOSETS AND LAUNDRY ROOMS
- THIRD FLOOR ONLY: 2 - 3' SIZE CEILING ACCESS PANEL, UL APPROVED FOR 1HR RATED CEILING ASSEMBLY, SEE 6/A1.1.2
- HIDE ALL EXPANSION JOINTS (EJ) BEHIND DOWNSPOUTS
- PROVIDE PEEL AND STICK FLASHING AROUND ALL DOORS AND WINDOWS. SEE SHEET A2.2
- WASHING MACHINES AND DRYERS TO BE PROVIDED AND INSTALLED BY THE CONTRACTOR.

## WALL LEGEND

- EXTERIOR WALL**  
STONE VENEER OVER METAL LATH OVER HOUSE WRAP OVER 1/2" EXTERIOR SHEATHING ON 2X6 WOOD STUDS 16" O.C. W/ 1/2" GYP. BD. ON INTERIOR. PROVIDE R-19 UNFACED BATT INSULATION. REFER TO EXTERIOR ELEVATIONS FOR STONE VENEER HEIGHTS
- EXTERIOR WALL**  
STONE VENEER OVER METAL LATH OVER HOUSE WRAP OVER 1/2" EXTERIOR SHEATHING ON 2X6 WOOD STUDS 16" O.C. W/ 1/2" GYP. BD. ON INTERIOR. PROVIDE R-19 UNFACED BATT INSULATION. REFER TO EXTERIOR ELEVATIONS FOR BRICK VENEER HEIGHTS
- EXTERIOR WALL**  
SIDING OVER HOUSE WRAP OVER 1/2" EXTERIOR SHEATHING ON 2X6 WD STUDS 16" O.C. W/ 1/2" GYP. BD. ON INTERIOR. PROVIDE R-19 UNFACED BATT INSULATION.
- 1 HOUR RATED BREEZEWAY WALL**  
SIDING OVER HOUSE WRAP OVER 1/2" EXTERIOR SHEATHING ON 2X6 WD STUDS W/ 5/8" FIRE RATED GYP. BD. ON INTERIOR. PROVIDE R-13 BATT INSULATION. BUILD IN ACCORDANCE WITH UL#356
- 1 HOUR TENANT SEPARATION WALL**  
DOUBLE 2X STUD WALL W/ 1 LAYER FIRE RATED 5/8" GYP. BD. ON OUTER SIDES AND 1 LAYER 1/2" PLYWOOD ON INSIDE OF ONE WALL. PROVIDE TWO LAYERS R-13 BATT INSULATION. BUILD WALL IN ACCORDANCE W/ UL #341.
- INTERIOR WALL PARTITION**  
2X4 WOOD STUDS W/ 1 LAYER OF 1/2" GYP. BD. EACH SIDE.
- INTERIOR WALL PARTITION**  
2X6 WOOD STUDS W/ 1 LAYER OF 1/2" GYP. BD. EACH SIDE.

EJ = EXPANSION JOINT

NOTES:

- REFER TO STRUCTURAL DRAWINGS FOR STUD SPACING ON ALL WALLS.
- 1/2" GYP. BD. IS TO BE USED IN LIEU OF 5/8" GYP. BD. AT ALL NON-VENEER PARTITIONS
- SEE A6 SHEETS FOR ENLARGED UNIT PLANS

- 1A - 1 - HOUR RATED WALL, UL# U356  
1B - 1 - HOUR RATED WALL, UL# U341

## FINISH SCHEDULE:

ROOM	WALLS	FLOORS	BASE	CEILING	NOTES
LIVING	PAINT	VINYL PLANK	WOOD	PAINT	REF. SHEET A8.5
KITCHEN	PAINT	VINYL PLANK	WOOD	PAINT	--
BATHROOM	PAINT	VINYL PLANK	WOOD	PAINT	--
BEDROOMS	PAINT	CARPET	WOOD	PAINT	--
HALLWAY	PAINT	VINYL PLANK	WOOD	PAINT	--

# MBI

MBI COMPANIES INC.  
100 COLONIAL CENTER SUITE 230  
LAKE MARY, FL 32746  
PHONE: (407) 585-0330  
FAX: (407) 585-0336  
WEB: mbicompanies.com  
ARCHITECTURE NO.: AA26000828  
INTERIORS NO.: IB26000665

CONSULTANT

SEAL



COPYRIGHT © MBI COMPANIES INC. 2019

THE DESIGN PROFESSIONAL DENIES ANY AND ALL RESPONSIBILITY AND LIABILITY FOR PROBLEMS WHICH ARISE FROM FAILURE TO FOLLOW THESE PLANS, SPECIFICATIONS AND THE DESIGN INTENT THEY CONVEY, OR PROBLEMS WHICH ARISE FROM OTHERS' FAILURE TO OBTAIN AND/OR FOLLOW THE DESIGN PROFESSIONAL'S GUIDANCE WITH RESPECT TO ANY ERRORS, OMISSIONS, INCONSISTENCIES, AMBIGUITIES OR CONFLICTS WHICH ARE ALLEGED.

PROJECT INFORMATION

PROJECT:

WESTWOOD AT  
WINTER HAVEN  
APARTMENTS

PROJECT ADDRESS:

Avenue G  
Winter Haven, FL 36801  
HUD# 067-35554

PROJECT NO.: 180888

ACTIVE DESIGN PHASE

- ☐ FOR REVIEW ONLY  
☐ FOR PERMITTING ONLY  
☐ SCHEMATIC DESIGN  
☐ DESIGN DEVELOPMENT  
☐ CONSTRUCTION BIDDING  
☒ CONSTRUCTION DOCUMENTS  
☐ AS-BUILT RECORD SET

REVISION INFORMATION

NO. DATE DESCRIPTION

NO.	DATE	DESCRIPTION

KEY PLAN

SHEET INFORMATION

SHEET ISSUED: 03-25-19  
DESIGNED BY: MES  
DRAWN BY: AV  
REVIEWED BY: CMG  
SHEET TITLE:

TYPICAL 1 BEDROOM  
UNIT LAYOUT, DOOR  
SCHEDULES

SHEET NO.:

## A601