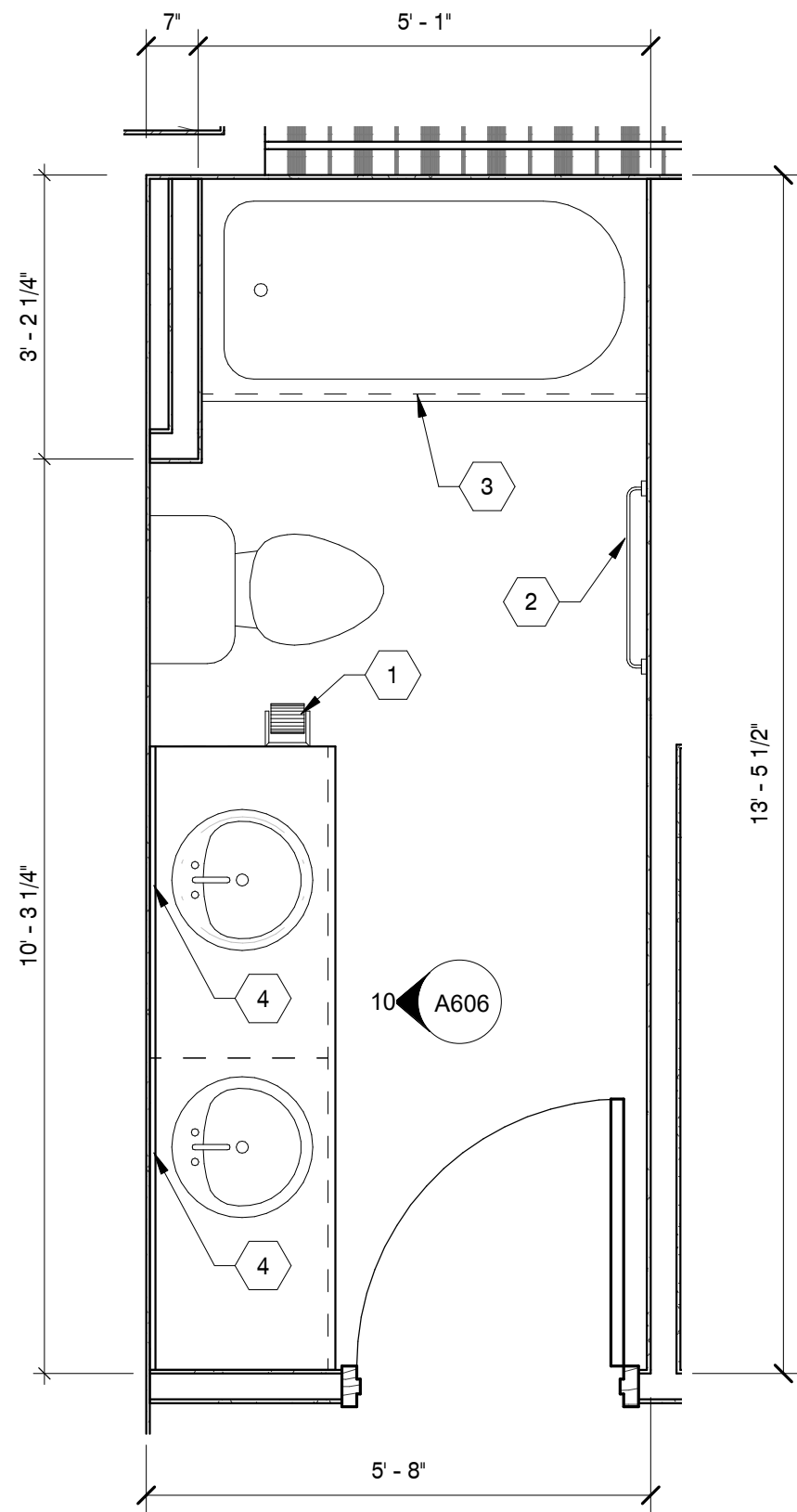


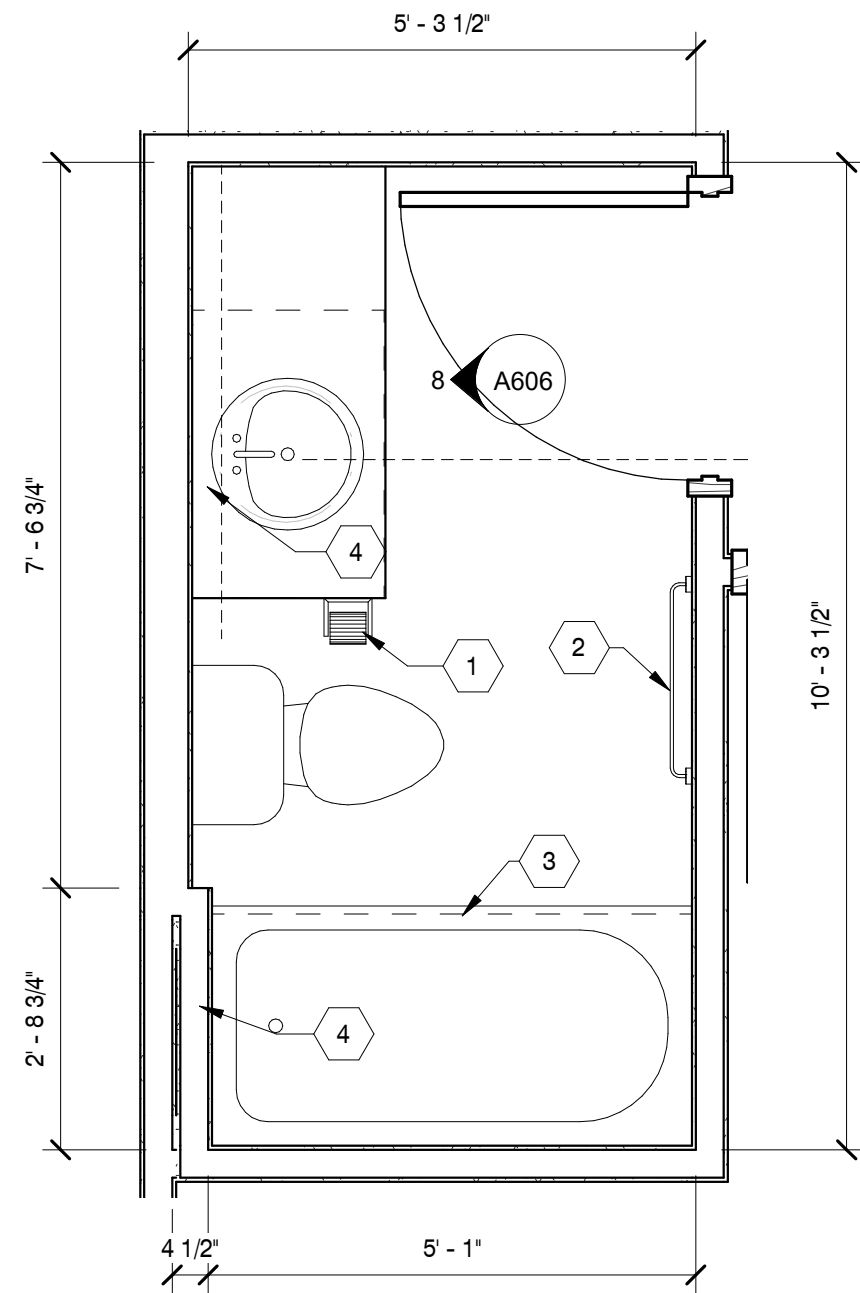
C:\Users\ashley\Documents\150698_Annotation_ashley.rvt
5/14/2019 9:55:24 AM



2 BR BATHROOM - B2

SCALE : 1/2" = 1'-0"

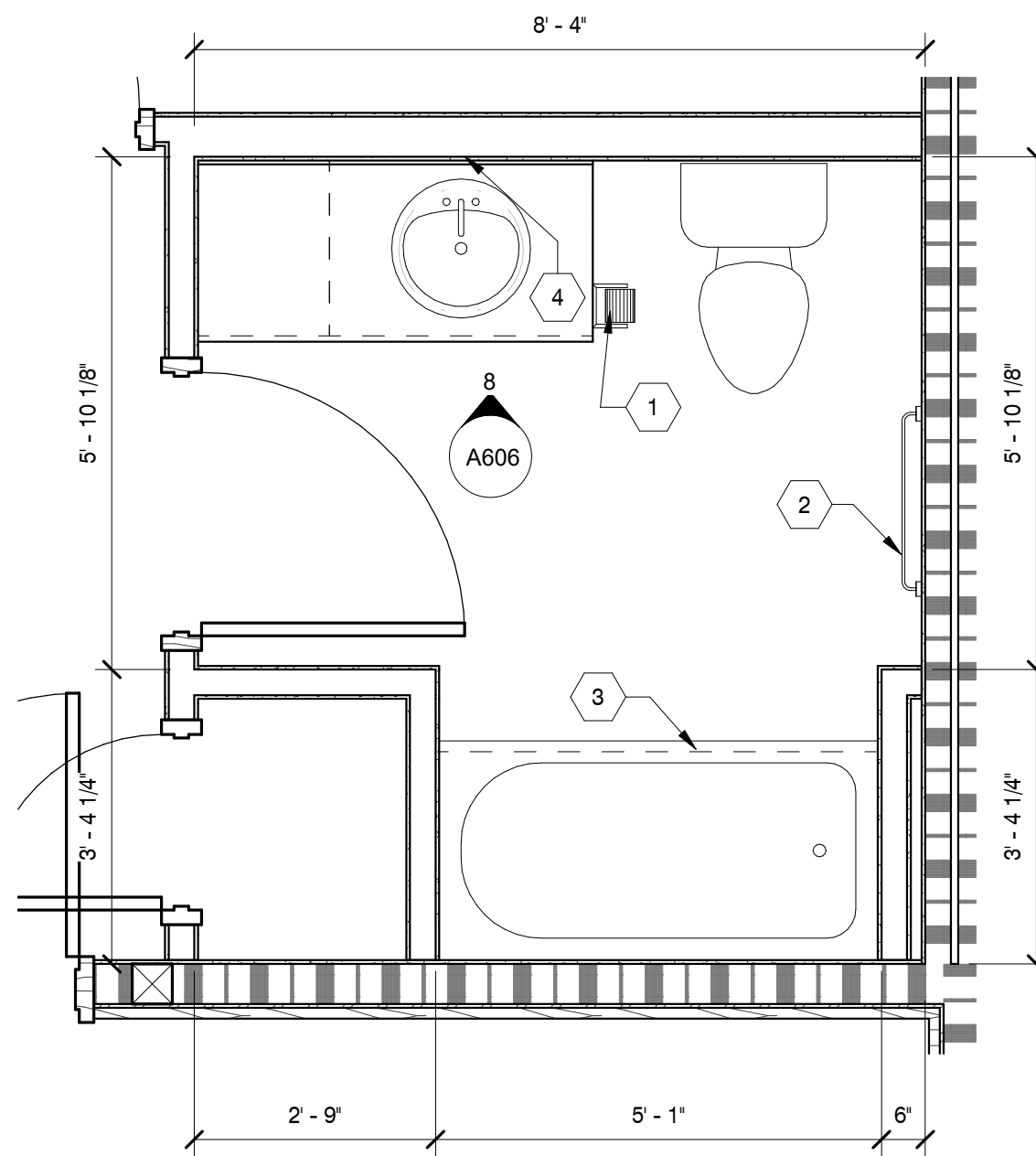
1



2 BR BATHROOM - B2

SCALE : 1/2" = 1'-0"

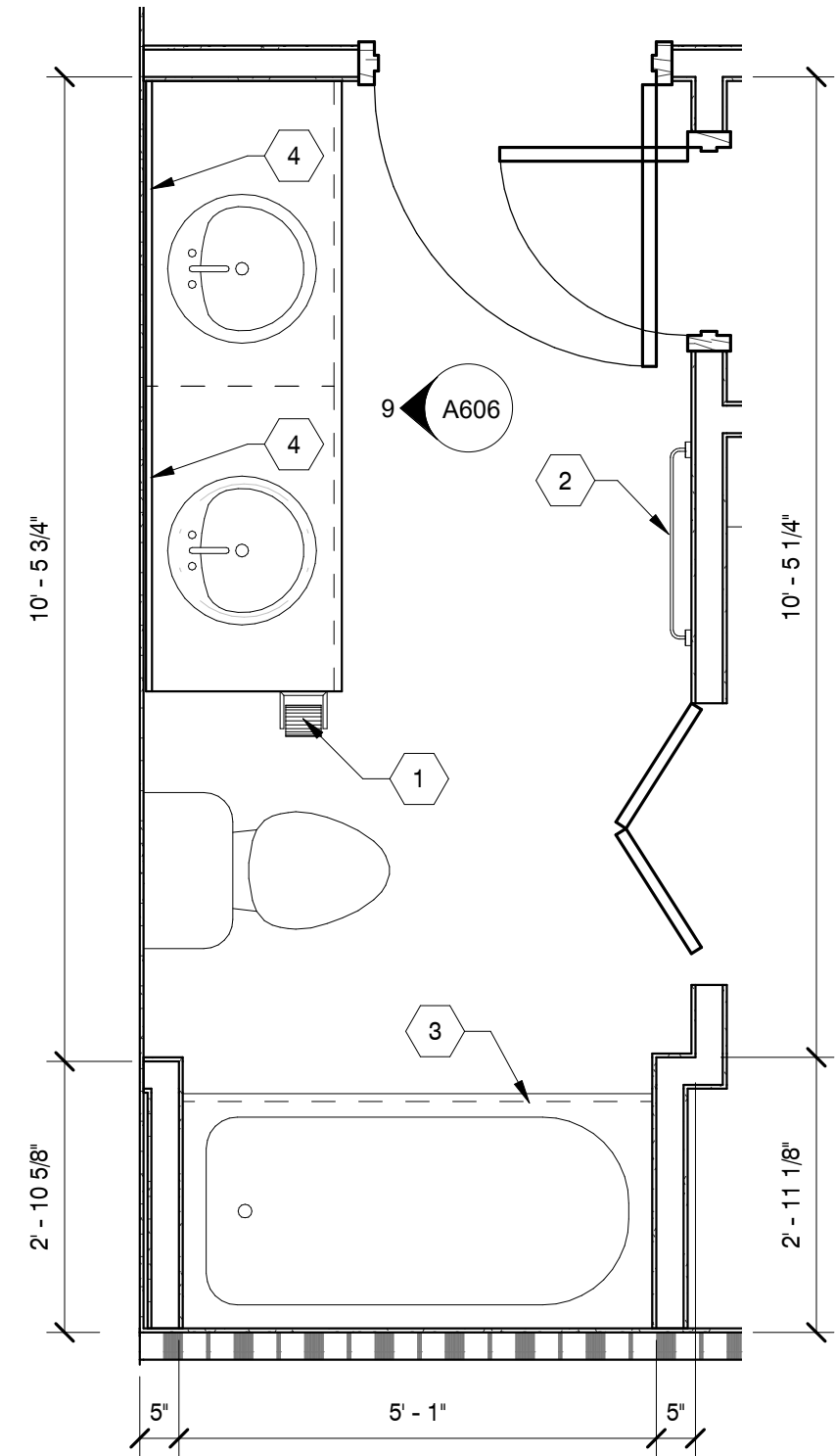
2



2 BR BATHROOM - B3

SCALE : 1/2" = 1'-0"

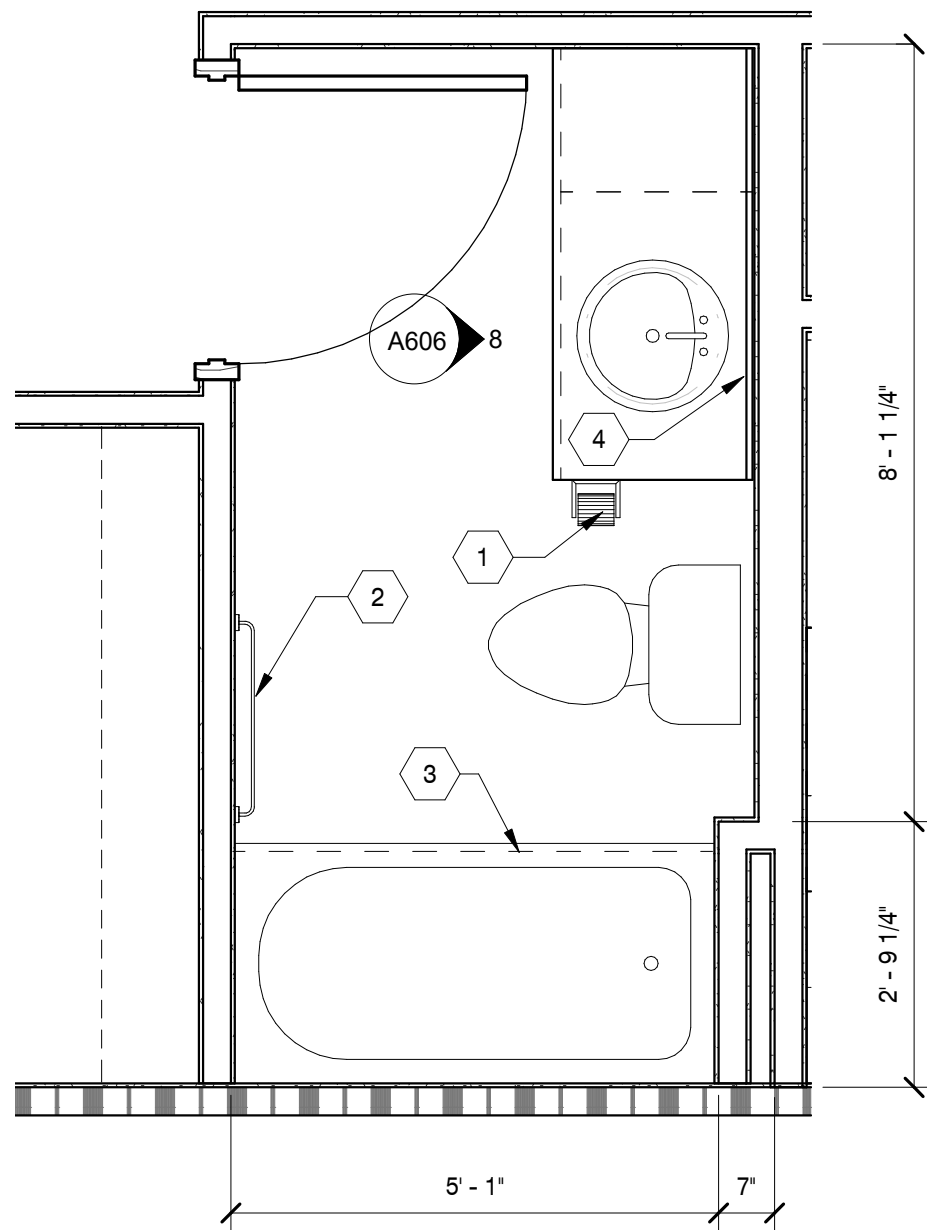
3



2 BR BATHROOM - B3

SCALE : 1/2" = 1'-0"

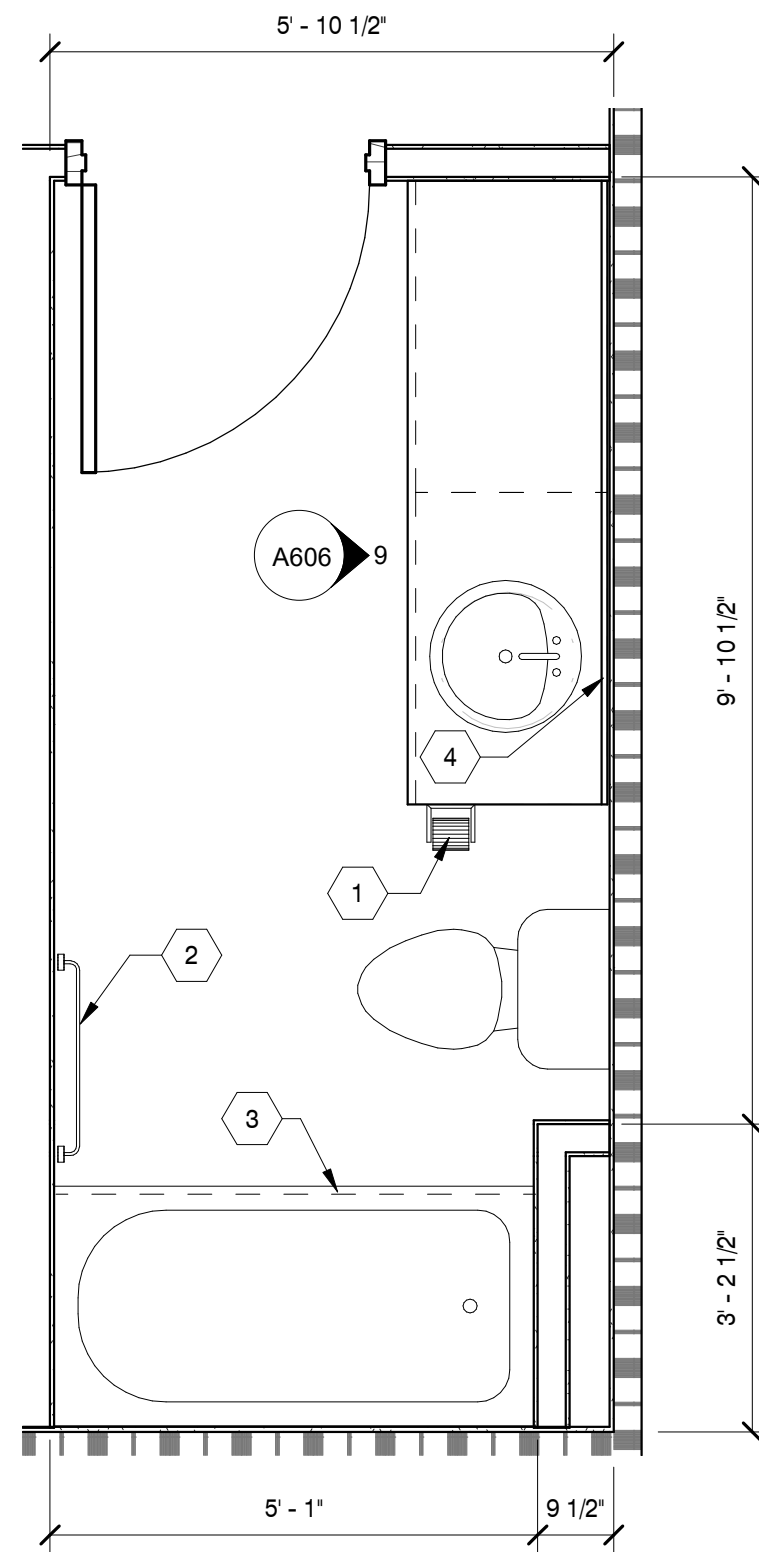
4



3 BR BATHROOM

SCALE : 1/2" = 1'-0"

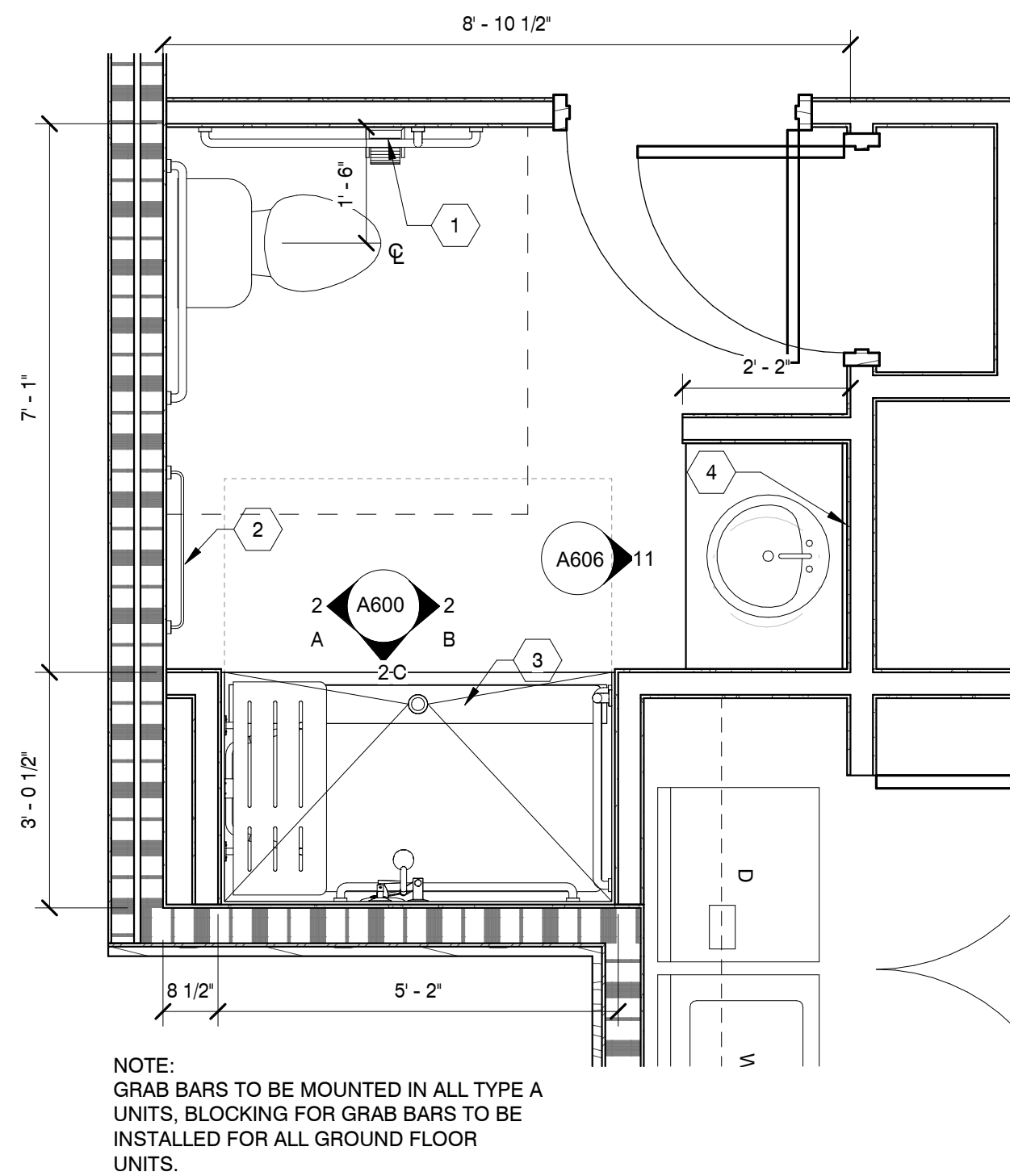
5



3 BR BATHROOM

SCALE : 1/2" = 1'-0"

6



TYP. 3 BR TYPE "A"
BATHROOM

SCALE : 1/2" = 1'-0"

7

MBI

MBI COMPANIES INC.
100 COLONIAL CENTER SUITE 230
LAKE MARY, FL 32746
PHONE: (407) 585-0330
FAX: (407) 585-0336
WEB: mbicompanies.com
ARCHITECTURE NO.: AA26000828
INTERIORS NO.: IB26000665

CONSULTANT

SEAL

ARCHITECT:



SCOTT D. MALENOCK
AR 92510 ID4968

COPYRIGHT © MBI COMPANIES INC. 2019

THE DESIGN PROFESSIONAL DENIES ANY AND ALL RESPONSIBILITY AND LIABILITY FOR PROBLEMS WHICH ARISE FROM FAILURE TO FOLLOW THESE PLANS, SPECIFICATIONS AND THE DESIGN INTENT THEY CONVEY, OR PROBLEMS WHICH ARISE FROM OTHERS' FAILURE TO OBTAIN AND/OR FOLLOW THE DESIGN PROFESSIONAL'S GUIDANCE WITH RESPECT TO ANY ERRORS, OMISSIONS, INCONSISTENCIES, AMBIGUITIES OR CONFLICTS WHICH ARE ALLEGED.

PROJECT INFORMATION

PROJECT:

WESTWOOD AT
WINTER HAVEN
APARTMENTS

PROJECT ADDRESS:

Avenue G
Winter Haven, FL 36801
HUD# 067-35554

PROJECT NO.: 180888

ACTIVE DESIGN PHASE

- ☐ FOR REVIEW ONLY
☐ FOR PERMITTING ONLY
☐ SCHEMATIC DESIGN
☐ DESIGN DEVELOPMENT
☐ CONSTRUCTION BIDDING
☒ CONSTRUCTION DOCUMENTS
☐ AS-BUILT RECORD SET

REVISION INFORMATION

NO. DATE DESCRIPTION

NO.	DATE	DESCRIPTION

KEY PLAN

SHEET INFORMATION

SHEET ISSUED: 03-25-19
DESIGNED BY: Designer
DRAWN BY: Author
REVIEWED BY: Checker
SHEET TITLE:

TYPICAL UNIT
MILLWORK
ELEVATIONS AND
DETAILS

SHEET NO.:

A607