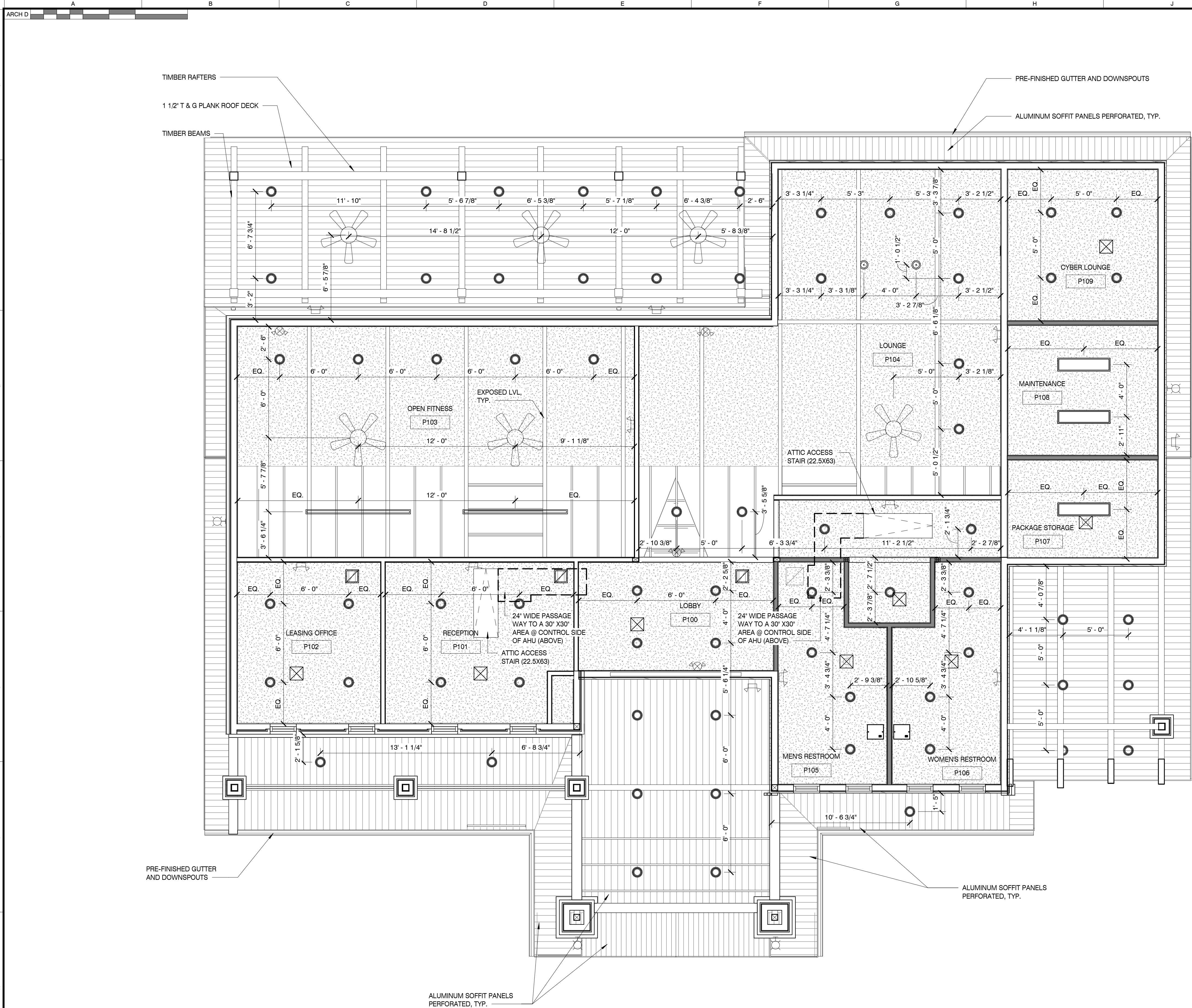


C:\Users\ashley\Documents\190888_Annotation_ashley.rvt
2/1/2025 3:51:01 PM



PAVILION REFLECTED CEILING PLAN

SCALE : 1/4" = 1'-0"

1

WALL LEGEND

- EXTERIOR WALL
STONE VENEER OVER HOUSE WRAP OVER 1/2" EXTERIOR SHEATHING ON 2X6 WOOD STUDS W/ R-19 UNFACES BATT INSULATION W/ 1/2" GYP. BD. ON INTERIOR UP TO 8'-8" A.F.F WITH SIDING OVER HOUSE WRAP OVER 1/2" EXTERIOR SHEATHING ON 2X WOOD STUDS W/ 1/2" GYP. BD. ON INTERIOR FROM 8'-8" A.F.F TO TOP OF WALL.
- EXTERIOR WALL
STONE VENEER OVER HOUSE WRAP OVER 1/2" EXTERIOR SHEATHING ON 2X6 WOOD STUDS W/ R-19 UNFACES BATT INSULATION W/ 1/2" GYP. BD. ON INTERIOR UP TO 3'-0" A.F.F WITH SIDING OVER HOUSE WRAP OVER 1/2" EXTERIOR SHEATHING ON 2X WOOD STUDS W/ 1/2" GYP. BD. ON INTERIOR FROM 3'-0" A.F.F TO TOP OF WALL.
- INTERIOR WALL PARTITION
2X WOOD STUDS W/ (1) LAYER OF 1/2" PLYWOOD ON ONE SIDE AND (1) LAYER OF 1/2" GYP. BD. EACH SIDE.
NOTE: PLYWOOD TO BE APPLIED ON SAME SIDE AS WALL TAG.
- INTERIOR WALL PARTITION
2X WOOD STUDS W/ (1) LAYER OF 1/2" GYP. BD. EACH SIDE
- INTERIOR WALL PARTITION
2X WOOD STUDS W/ SOUND BATT INSUL. & (1) LAYER OF 1/2" GYP. BD. EACH SIDE

* 1/2" GYP. BD. IS TO BE USED IN LIEU OF 5/8" GYP. BD. AT ALL NON-RATED PARTITIONS

NOTE: ATTIC ACCESS LADDER SHALL BE BY LOUISVILLE ALUM ATTIC LADDER, MODEL AL258P OR EQUAL, TYP.

REFLECTED CEILING LEGEND

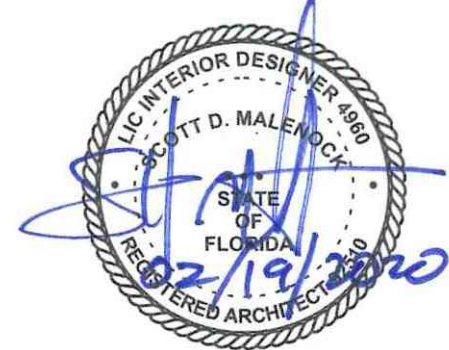
- 2X4 FLUORESCENT FIXTURE
- 8" RECESSED CAN LIGHT
- 8'-0" STRIP LIGHT
- 4'-0" STRIP LIGHT
- COMBINATION EMERGENCY LIGHT AND EXIT LIGHT
- EXIT LIGHT
- EMERGENCY LIGHT
- HVAC SUPPLY DIFFUSER
- HVAC R/A GRILL
- EXHAUST FAN
- 5/8" GYP. BD. CEILING (TO BE PAINTED P1 UNLESS NOTED OTHERWISE)
- PERFINISHED ALUMINUM SOFFIT
- 9'-0" A.F.F. CEILING HEIGHT UNLESS OTHERWISE NOTED

MBI

MBI COMPANIES INC.
100 COLONIAL CENTER SUITE 230
LAKE MARY, FL 32746
PHONE: (407) 585-0330
FAX: (407) 585-0336
WEB: mbicompanies.com
ARCHITECTURE NO.: AA26000828
INTERIORS NO.: IB26000665

CONSULTANT

SEAL



COPYRIGHT © MBI COMPANIES INC. 2019
THE DESIGN PROFESSIONAL DENIES ANY AND ALL RESPONSIBILITY AND LIABILITY FOR PROBLEMS WHICH ARISE FROM FAILURE TO FOLLOW THESE PLANS, SPECIFICATIONS AND THE DESIGN INTENT THEY CONVEY, OR PROBLEMS WHICH ARISE FROM OTHERS' FAILURE TO OBTAIN AND/OR FOLLOW THE DESIGN PROFESSIONAL'S GUIDANCE WITH RESPECT TO ANY ERRORS, OMISSIONS, INCONSISTENCIES, AMBIGUITIES OR CONFLICTS WHICH ARE ALLEGED.

PROJECT INFORMATION

PROJECT:

WESTWOOD AT
WINTER HAVEN
APARTMENTS

PROJECT ADDRESS:

Avenue G
Winter Haven, FL 36801
HUD# 067-35554

PROJECT NO.: 180888

ACTIVE DESIGN PHASE

- ☐ FOR REVIEW ONLY
- ☐ FOR PERMITTING ONLY
- ☐ SCHEMATIC DESIGN
- ☐ DESIGN DEVELOPMENT
- ☐ CONSTRUCTION BIDDING
- ☒ CONSTRUCTION DOCUMENTS
- ☐ AS-BUILT RECORD SET

REVISION INFORMATION

NO. DATE DESCRIPTION

KEY PLAN

SHEET INFORMATION

SHEET ISSUED: 03-25-19
DESIGNED BY: MES
DRAWN BY: AV
REVIEWED BY: CMG
SHEET TITLE:

PAVILION REFLECTED
CEILING PLAN

SHEET NO.:

A803