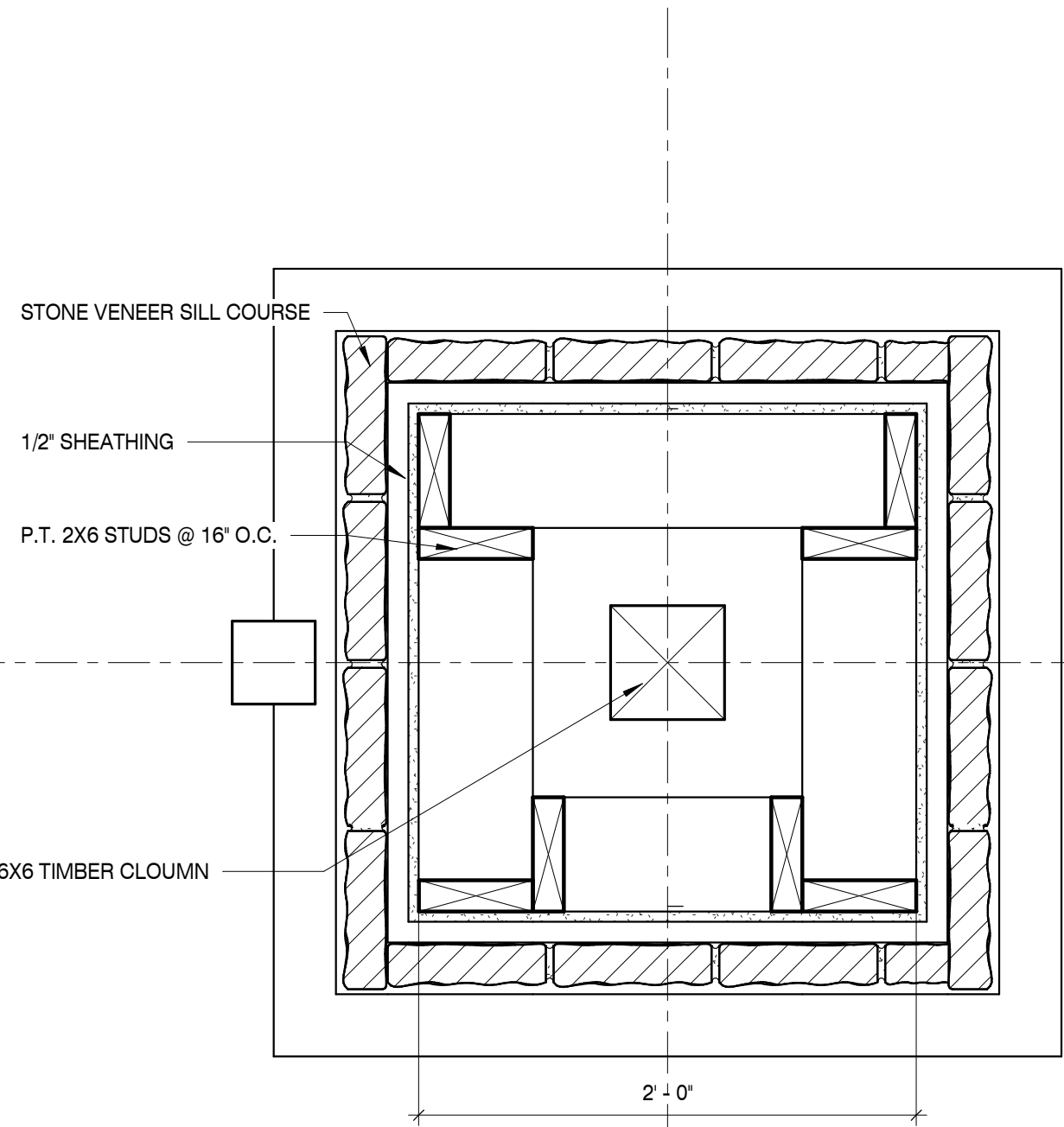


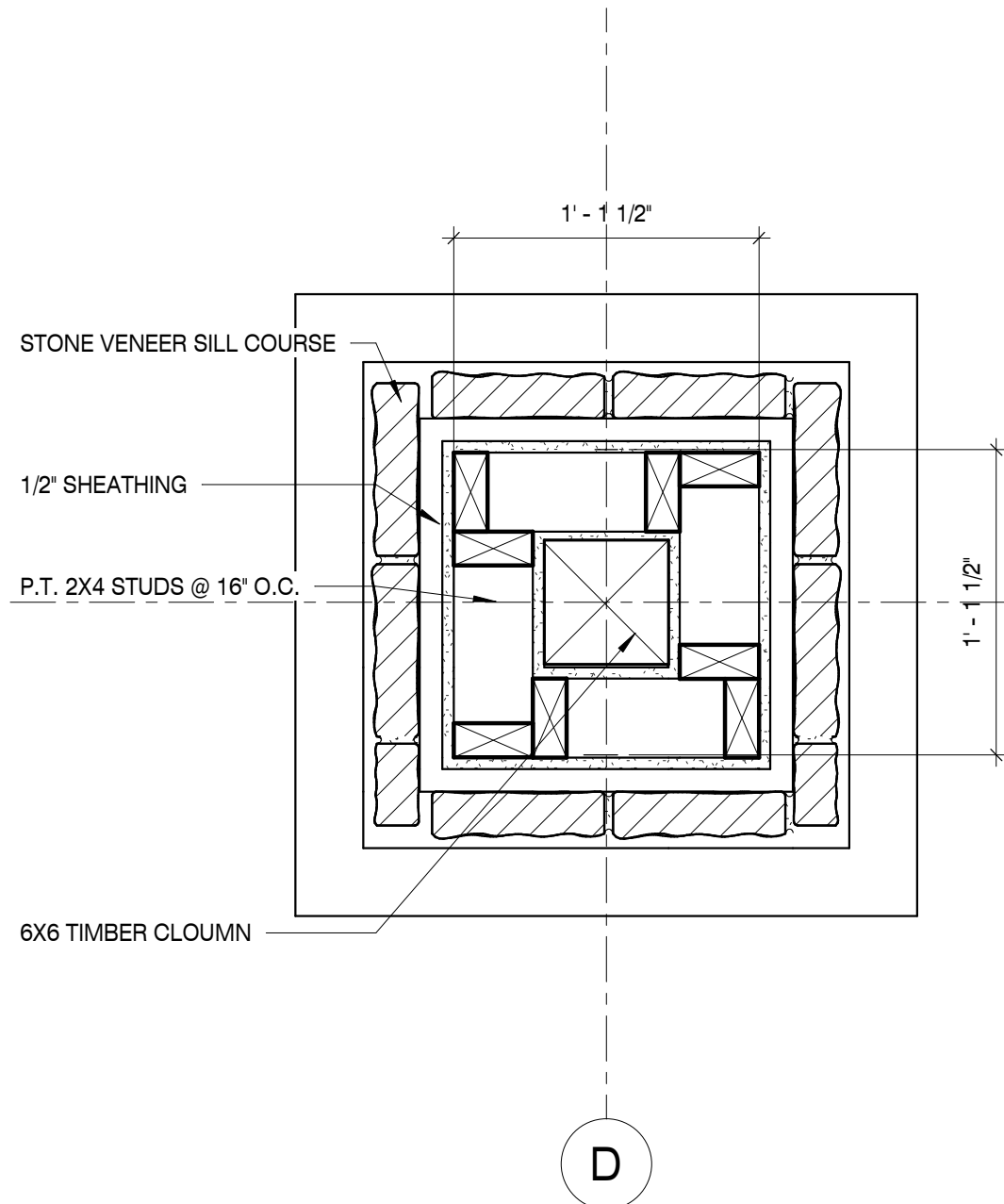
C:\Users\ashley\Documents\150888\_Annotation\_ashley.rvt  
5/14/2019 9:52:27 AM



COLUMN DETAIL

SCALE : 1 1/2" = 1'-0"

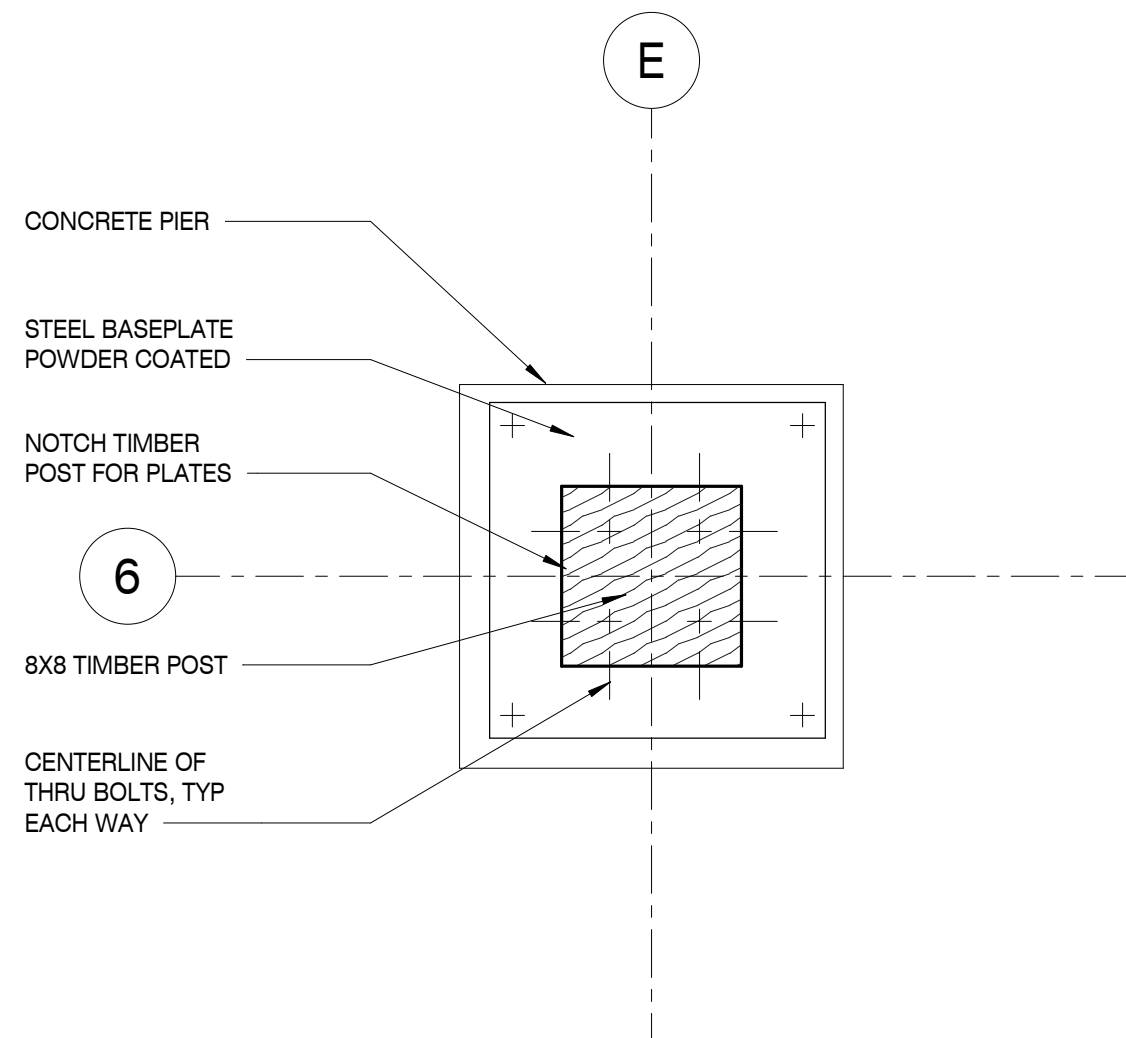
1



COLUMN DETAIL

SCALE : 1 1/2" = 1'-0"

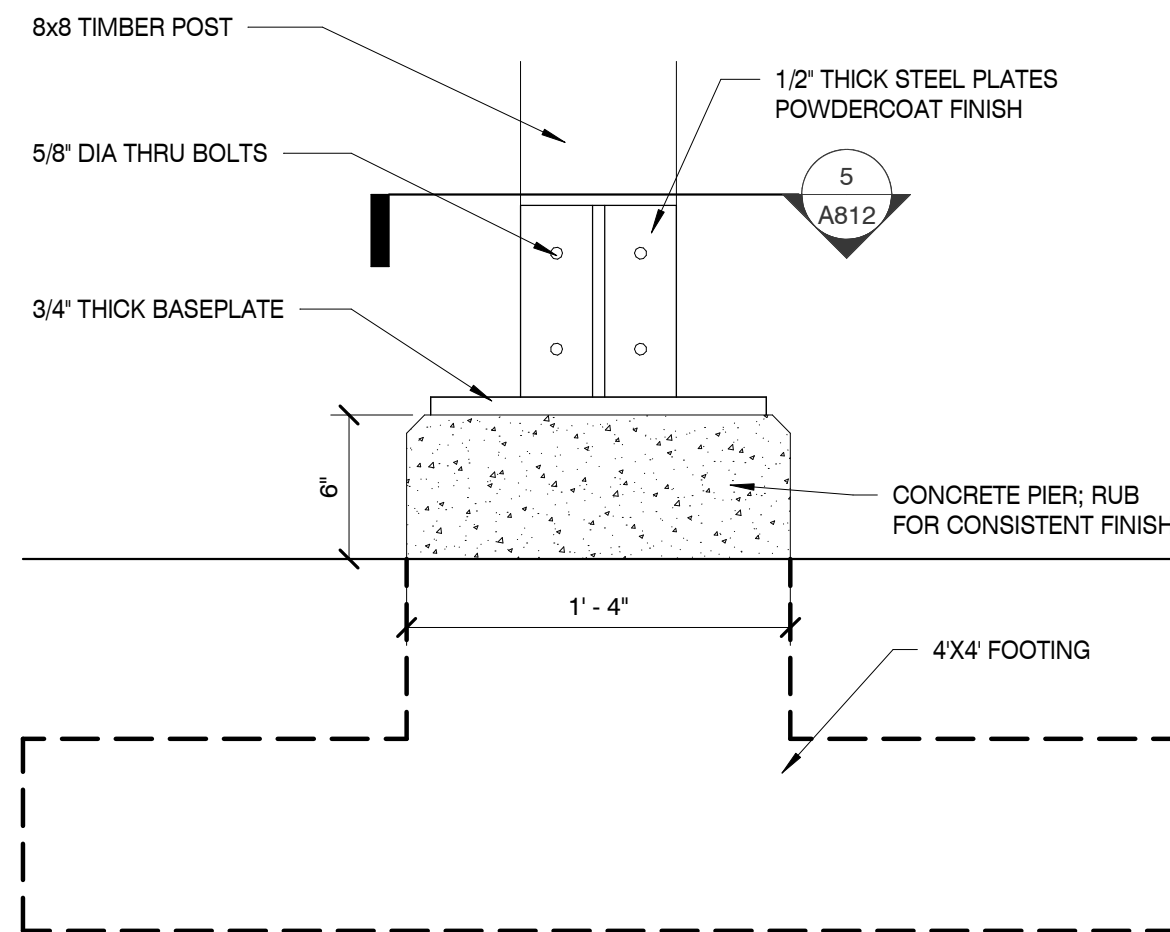
2



POST DETAIL

SCALE : 1 1/2" = 1'-0"

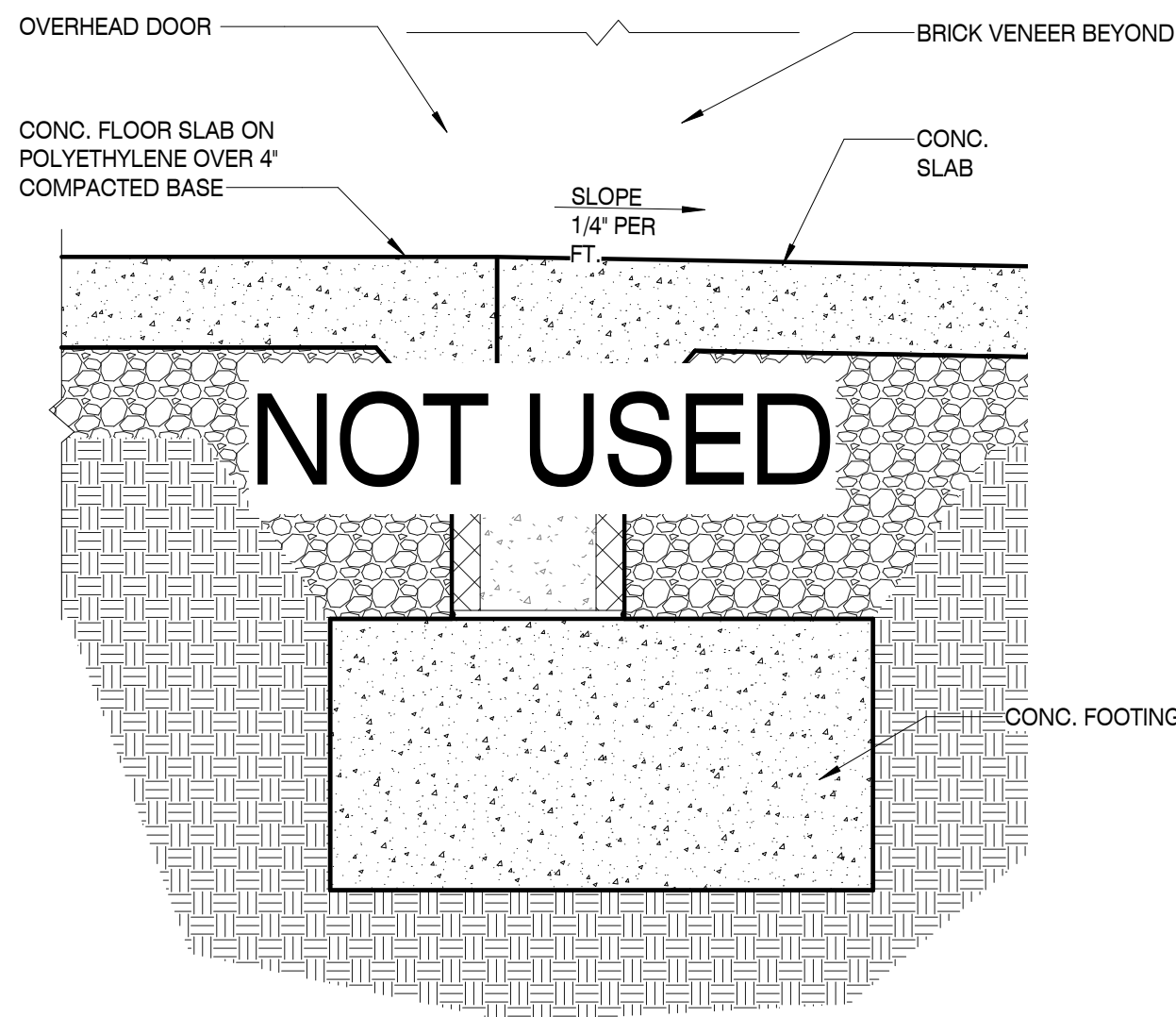
3



SOFFIT DETAIL

SCALE : 1 1/2" = 1'-0"

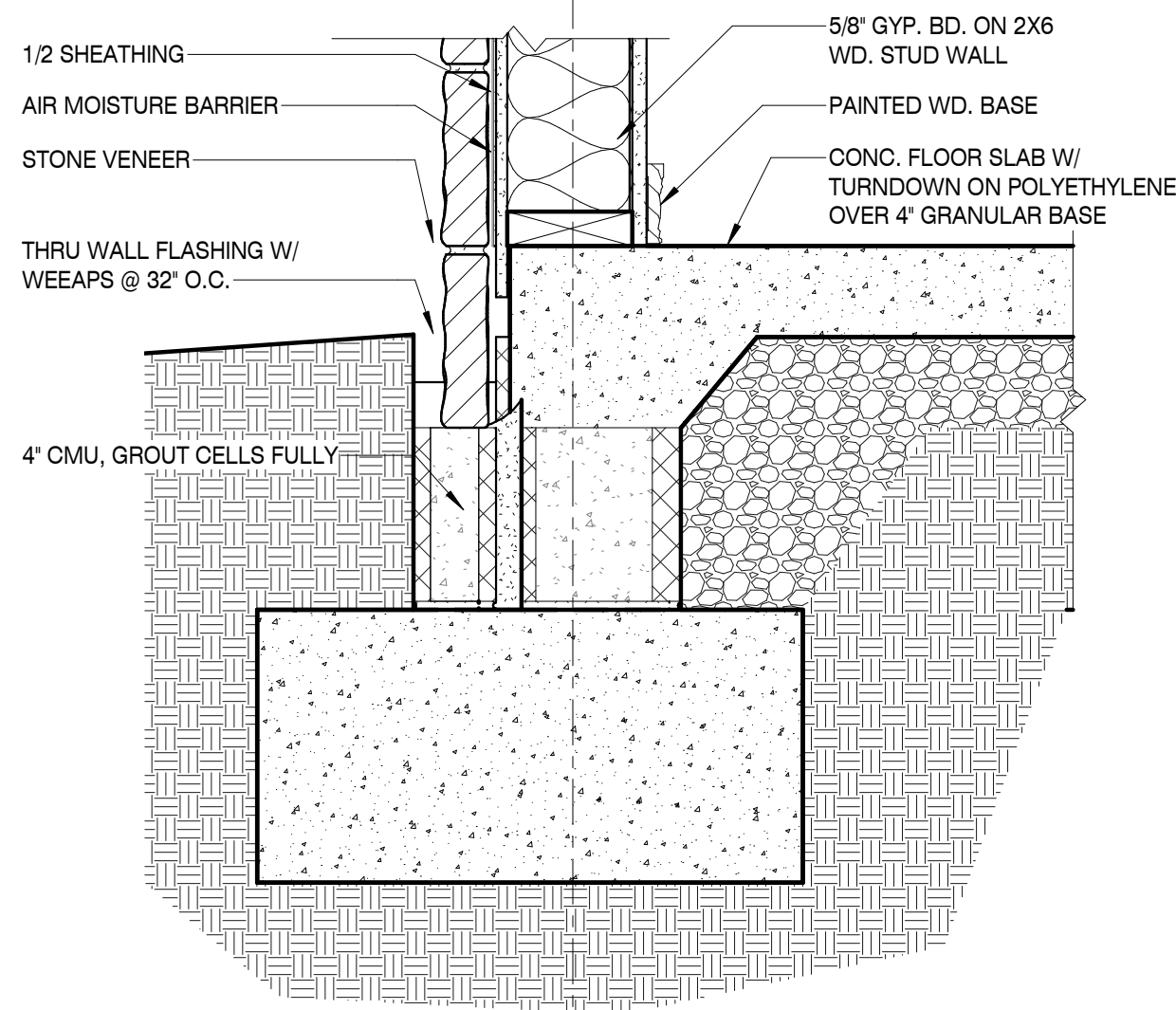
4



FOOTING DETAIL

SCALE : 1 1/2" = 1'-0"

5



FOOTING DETAIL

SCALE : 1 1/2" = 1'-0"

6

MBI

MBI COMPANIES INC.  
100 COLONIAL CENTER SUITE 230  
LAKE MARY, FL 32746  
PHONE: (407) 585-0330  
FAX: (407) 585-0336  
WEB: mbicompanies.com  
ARCHITECTURE NO.: AA26000828  
INTERIORS NO.: IB26000665

CONSULTANT

SEAL

ARCHITECT:



SCOTT D. MALENOCK  
AR 92510 ID4968

COPYRIGHT © MBI COMPANIES INC. 2019

THE DESIGN PROFESSIONAL DENIES ANY AND ALL RESPONSIBILITY AND LIABILITY FOR PROBLEMS WHICH ARISE FROM FAILURE TO FOLLOW THESE PLANS, SPECIFICATIONS AND THE DESIGN INTENT THEY CONVEY, OR PROBLEMS WHICH ARISE FROM OTHERS' FAILURE TO OBTAIN AND/OR FOLLOW THE DESIGN PROFESSIONAL'S GUIDANCE WITH RESPECT TO ANY ERRORS, OMISSIONS, INCONSISTENCIES, AMBIGUITIES OR CONFLICTS WHICH ARE ALLEGED.

PROJECT INFORMATION

PROJECT:

WESTWOOD AT  
WINTER HAVEN  
APARTMENTS

PROJECT ADDRESS:

Avenue G  
Winter Haven, FL 36801  
HUD# 067-35554

PROJECT NO.: 180888

ACTIVE DESIGN PHASE

- ☐ FOR REVIEW ONLY  
☐ FOR PERMITTING ONLY  
☐ SCHEMATIC DESIGN  
☐ DESIGN DEVELOPMENT  
☐ CONSTRUCTION BIDDING  
☒ CONSTRUCTION DOCUMENTS  
☐ AS-BUILT RECORD SET

REVISION INFORMATION

NO. DATE DESCRIPTION

NO.	DATE	DESCRIPTION

KEY PLAN

SHEET INFORMATION

SHEET ISSUED: 03-25-19  
DESIGNED BY: MES  
DRAWN BY: AV  
REVIEWED BY: CMG  
SHEET TITLE:

PAVILION DETAILS

SHEET NO.:

A812