

X:\Users\191666\My Documents\Winterhaven180888_Annotation_Library\mbiarch.com\nt
3/8/2018 1:08:54 PM

ARCH D

8

7

6

5

4

3

2

1

A

B

C

D

E

F

G

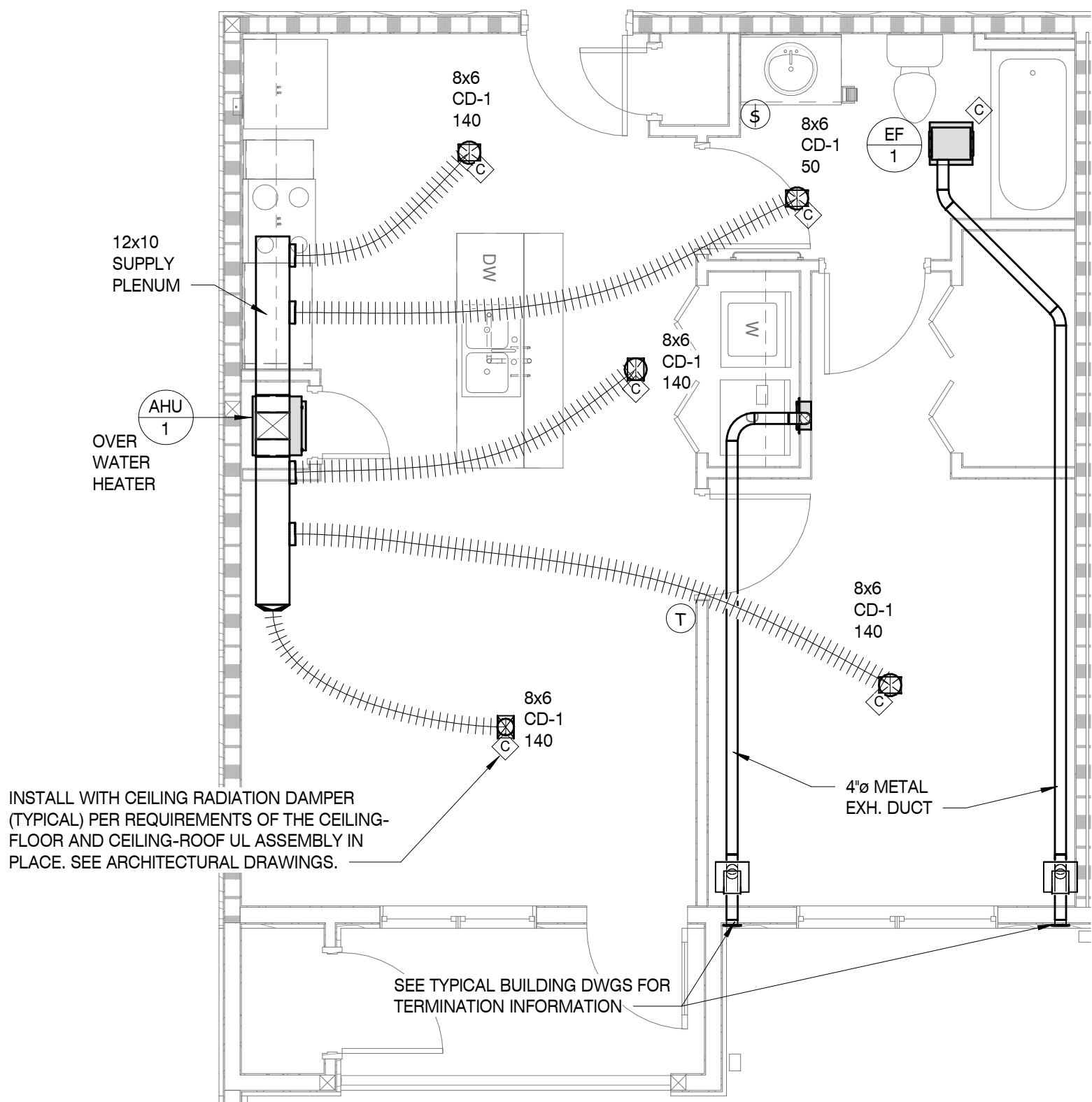
H

J

K

L

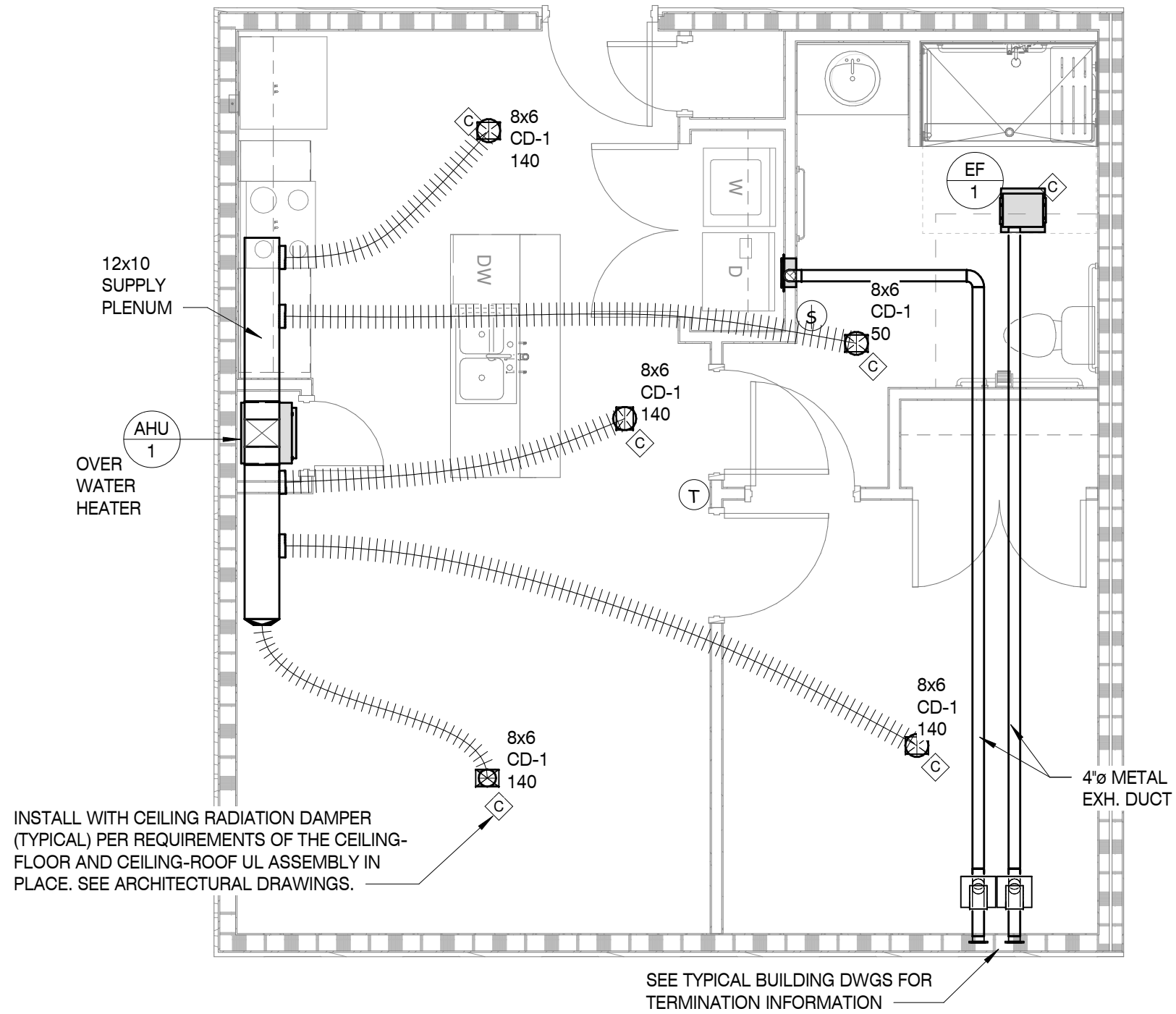
M



TYPICAL 1 BEDROOM UNIT

SCALE : 1/4" = 1'-0"

1



1 BEDROOM UNIT - HANDICAP UNIT

SCALE : 1/4" = 1'-0"

2

MBI

MBI COMPANIES INC.
100 COLONIAL CENTER SUITE 230
LAKE MARY, FL 32746

PHONE: (407) 585-0330
FAX: (407) 585-0336
WEB: mbicompanies.com

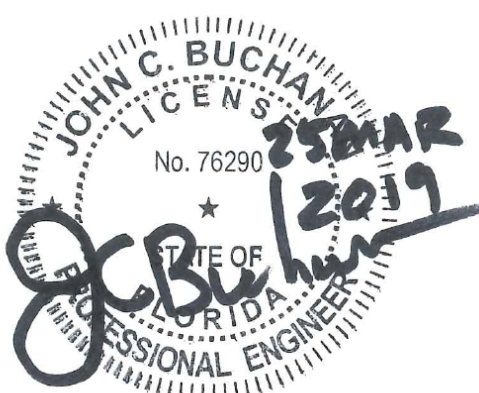
ARCHITECTURE NO.: AA26000828
INTERIORS NO.: IB26000665

CONSULTANT
MECHANICAL ENGINEER:

MBI COMPANIES INC.
298 N. WEISGARBER ROAD
KNOXVILLE, TN 37919

PHONE: (865) 584-0999
FAX: (865) 584-5213
WEB: mbicompanies.com

SEAL



COPYRIGHT © MBI COMPANIES INC. 2019

THE DESIGN PROFESSIONAL DENIES ANY AND ALL RESPONSIBILITY AND LIABILITY FOR PROBLEMS WHICH ARISE FROM FAILURE TO FOLLOW THESE PLANS, SPECIFICATIONS AND THE DESIGN INTENT THEY CONVEY, OR PROBLEMS WHICH ARISE FROM OTHERS' FAILURE TO OBTAIN AND/OR FOLLOW THE DESIGN PROFESSIONAL'S GUIDANCE WITH RESPECT TO ANY ERRORS, OMISSIONS, INCONSISTENCIES, AMBIGUITIES OR CONFLICTS WHICH ARE ALLEGED.

PROJECT INFORMATION
PROJECT:

WESTWOOD AT WINTER HAVEN APARTMENTS

PROJECT ADDRESS:

Avenue G
Winter Haven, FL 36801
HUD# 067-35554

PROJECT NO.: 180888

ACTIVE DESIGN PHASE

☐ FOR REVIEW ONLY
☐ FOR PERMITTING ONLY
☐ SCHEMATIC DESIGN
☐ DESIGN DEVELOPMENT
☐ CONSTRUCTION BIDDING
☒ CONSTRUCTION DOCUMENTS
☐ AS-BUILT RECORD SET

REVISION INFORMATION

NO.	DATE	DESCRIPTION

KEY PLAN

SHEET INFORMATION

SHEET ISSUED: 03-25-19
DESIGNED BY: ALJ
DRAWN BY: ALJ
REVIEWED BY: KH
SHEET TITLE:

TYPICAL 1 BEDROOM UNITS - HVAC

SHEET NO.:

M201