

C:\Users\james\Documents\180888\_Annotation\_james\EA03.rvt  
5/3/2018 3:10:53 PM

ARCH D

8

7

6

5

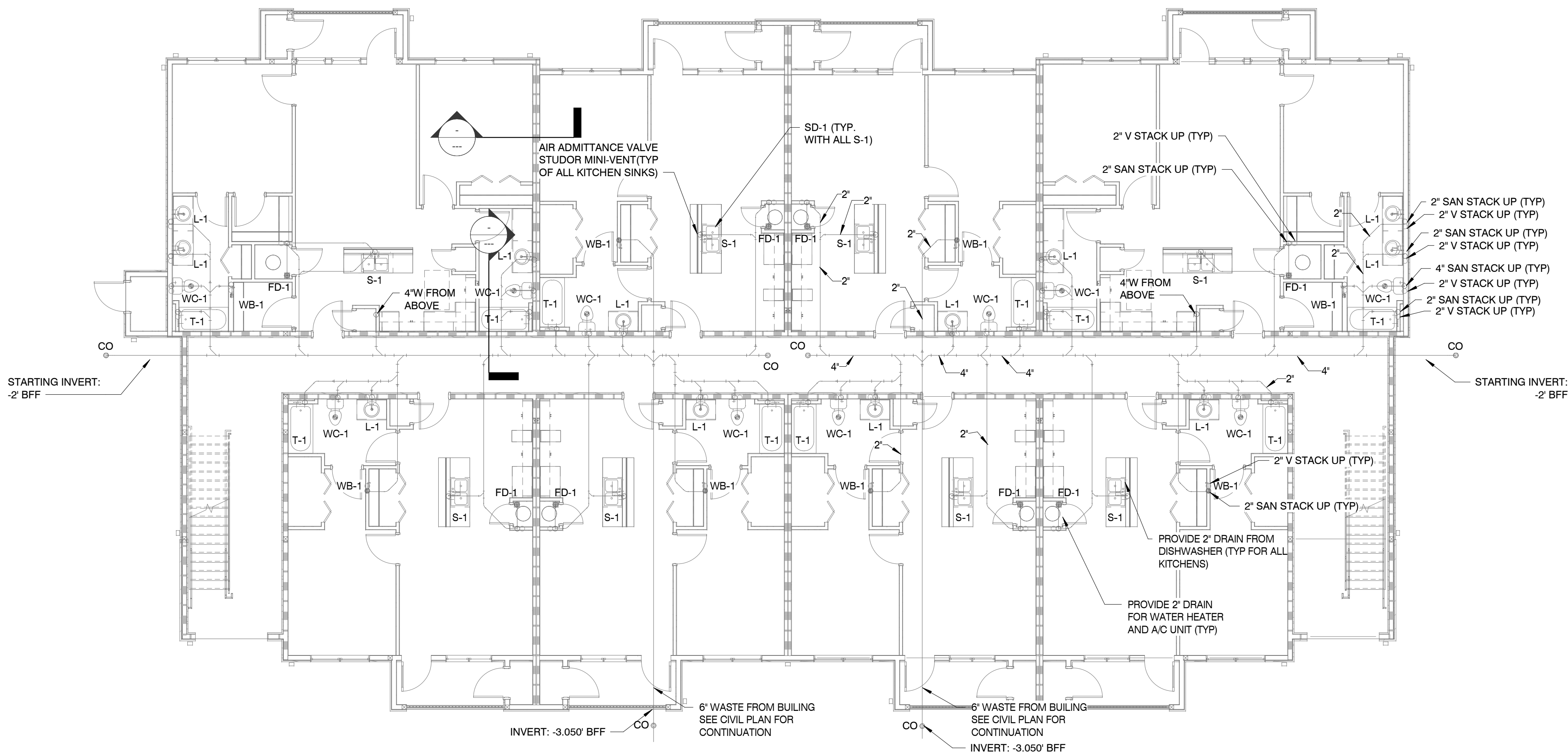
4

3

2

1

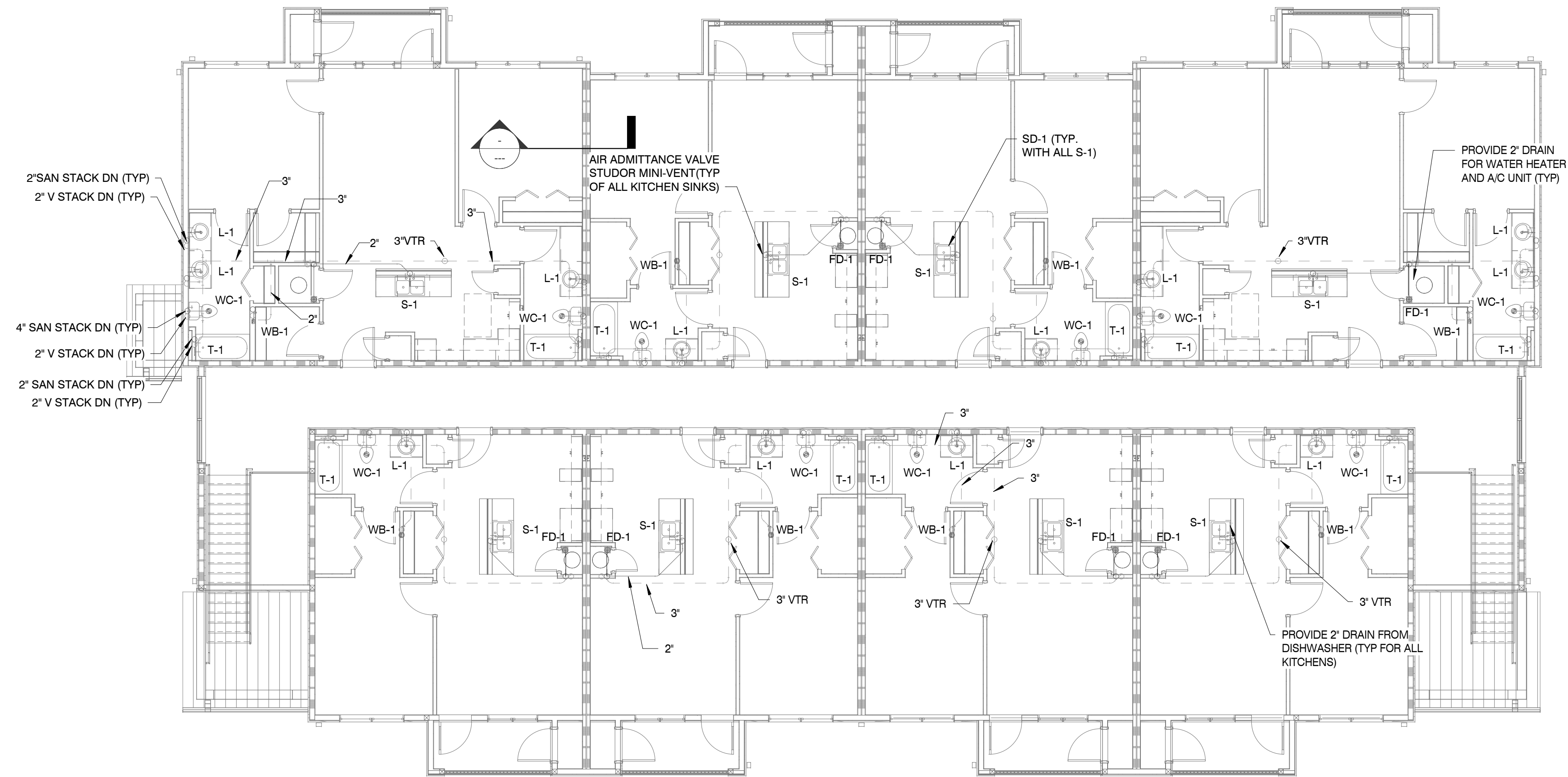
A B C D E F G H J K L M



## BLDG TYPE 4 - FIRST FLOOR PLAN

SCALE : 1/8" = 1'-0"

1



## BLDG TYPE 4 - SECOND FLOOR PLAN

SCALE : 1/8" = 1'-0"

2

## WALL LEGEND

	<b>EXTERIOR WALL</b> STONE VENEER OVER METAL LATH OVER HOUSE WRAP OVER 1/2" EXTERIOR SHEATHING ON 2X6 WOOD STUDS 16' O.C. W/ 1/2" GYP. BD. ON INTERIOR. PROVIDE R-19 UNFACED BATT INSULATION. REFER TO EXTERIOR ELEVATIONS FOR STONE VENEER HEIGHTS
	<b>EXTERIOR WALL</b> STONE VENEER OVER METAL LATH OVER HOUSE WRAP OVER 1/2" EXTERIOR SHEATHING ON 2X6 WOOD STUDS 16' O.C. W/ 1/2" GYP. BD. ON INTERIOR. PROVIDE R-19 UNFACED BATT INSULATION. REFER TO EXTERIOR ELEVATIONS FOR BRICK VENEER HEIGHTS
	<b>EXTERIOR WALL</b> SIDING OVER HOUSE WRAP OVER 1/2" EXTERIOR SHEATHING ON 2X6 WD STUDS 16' O.C. W/ 1/2" GYP. BD. ON INTERIOR. PROVIDE R-19 UNFACED BATT INSULATION.
	<b>1 HOUR RATED BREEZEWAY WALL</b> SIDING OVER HOUSE WRAP OVER 1/2" EXTERIOR SHEATHING ON 2X6 WD STUDS W/ 5/8" FIRE RATED GYP. BD. ON INTERIOR. PROVIDE R-13 BATT INSULATION. BUILD IN ACCORDANCE WITH UL#856
	<b>1 HOUR TENANT SEPARATION WALL</b> DOUBLE 2X STUD WALL W/ 1 LAYER FIRE RATED 5/8" GYP. BD. ON OUTER SIDES AND 1 LAYER 1/2" PLYWOOD ON INSIDE OF ONE WALL. PROVIDE TWO LAYERS R-13 BATT INSULATION. BUILD WALL IN ACCORDANCE W/ UL #341.
	<b>INTERIOR WALL PARTITION</b> 2X4 WOOD STUDS W/ 1 LAYER OF 1/2" GYP. BD. EACH SIDE.
	<b>INTERIOR WALL PARTITION</b> 2X6 WOOD STUDS W/ 1 LAYER OF 1/2" GYP. BD. EACH SIDE.

EJ = EXPANSION JOINT

- NOTES:
1. REFER TO STRUCTURAL DRAWINGS FOR STUD SPACING ON ALL WALLS.
  2. 1/2" GYP. BD. IS TO BE USED IN LIEU OF 5/8" GYP. BD. AT ALL NON-RATED PARTITIONS
  3. SEE A6 SHEETS FOR ENLARGED UNIT PLANS

1A		1 - HOUR RATED WALL, UL# U356
1B		1 - HOUR RATED WALL, UL# U341

MBI

MBI COMPANIES INC.  
100 COLONIAL CENTER SUITE 230  
LAKE MARY, FL 32746  
PHONE: (407) 585-0330  
FAX: (407) 585-0336  
WEB: mbicompanies.com  
ARCHITECTURE NO.: AA26000828  
INTERIORS NO.: IB26000665

CONSULTANT  
MECHANICAL ENGINEER:

MBI COMPANIES INC.  
298 N. WEISGARBER ROAD  
KNOXVILLE, TN 37919  
PHONE: (865) 584-0999  
FAX: (865) 584-5213  
WEB: mbicompanies.com

SEAL

COPYRIGHT © MBI COMPANIES INC. 2019  
THE DESIGN PROFESSIONAL DENIES ANY AND ALL RESPONSIBILITY AND LIABILITY FOR PROBLEMS WHICH ARISE FROM FAILURE TO FOLLOW THESE PLANS, SPECIFICATIONS AND THE DESIGN INTENT THEY CONVEY, OR PROBLEMS WHICH ARISE FROM OTHERS' FAILURE TO OBTAIN AND/OR FOLLOW THE DESIGN PROFESSIONAL'S GUIDANCE WITH RESPECT TO ANY ERRORS, OMISSIONS, INCONSISTENCIES, AMBIGUITIES OR CONFLICTS WHICH ARE ALLEGED.

### PROJECT INFORMATION

PROJECT:

### WESTWOOD AT WINTER HAVEN APARTMENTS

PROJECT ADDRESS:

Avenue G  
Winter Haven, FL 36801  
HUD# 067-35554

PROJECT NO.: 180888

### ACTIVE DESIGN PHASE

- ☐ FOR REVIEW ONLY  
☐ FOR PERMITTING ONLY  
☐ SCHEMATIC DESIGN  
☐ DESIGN DEVELOPMENT  
☐ CONSTRUCTION BIDDING  
☒ CONSTRUCTION DOCUMENTS  
☐ AS-BUILT RECORD SET

### REVISION INFORMATION

NO.	DATE	DESCRIPTION

### KEY PLAN

### SHEET INFORMATION

SHEET ISSUED: 03-25-19  
DESIGNED BY: Designer  
DRAWN BY: Author  
REVIEWED BY: Checker  
SHEET TITLE:

BUILDING TYPE 4  
GROUND AND SECOND  
FLOOR - WASTE

SHEET NO.:

P104-1