

C:\Users\jmc\Documents\180888_Annotation_jmc\PEA03.rvt
5/20/2019 4:07:23 PM

ARCH D

8

7

6

5

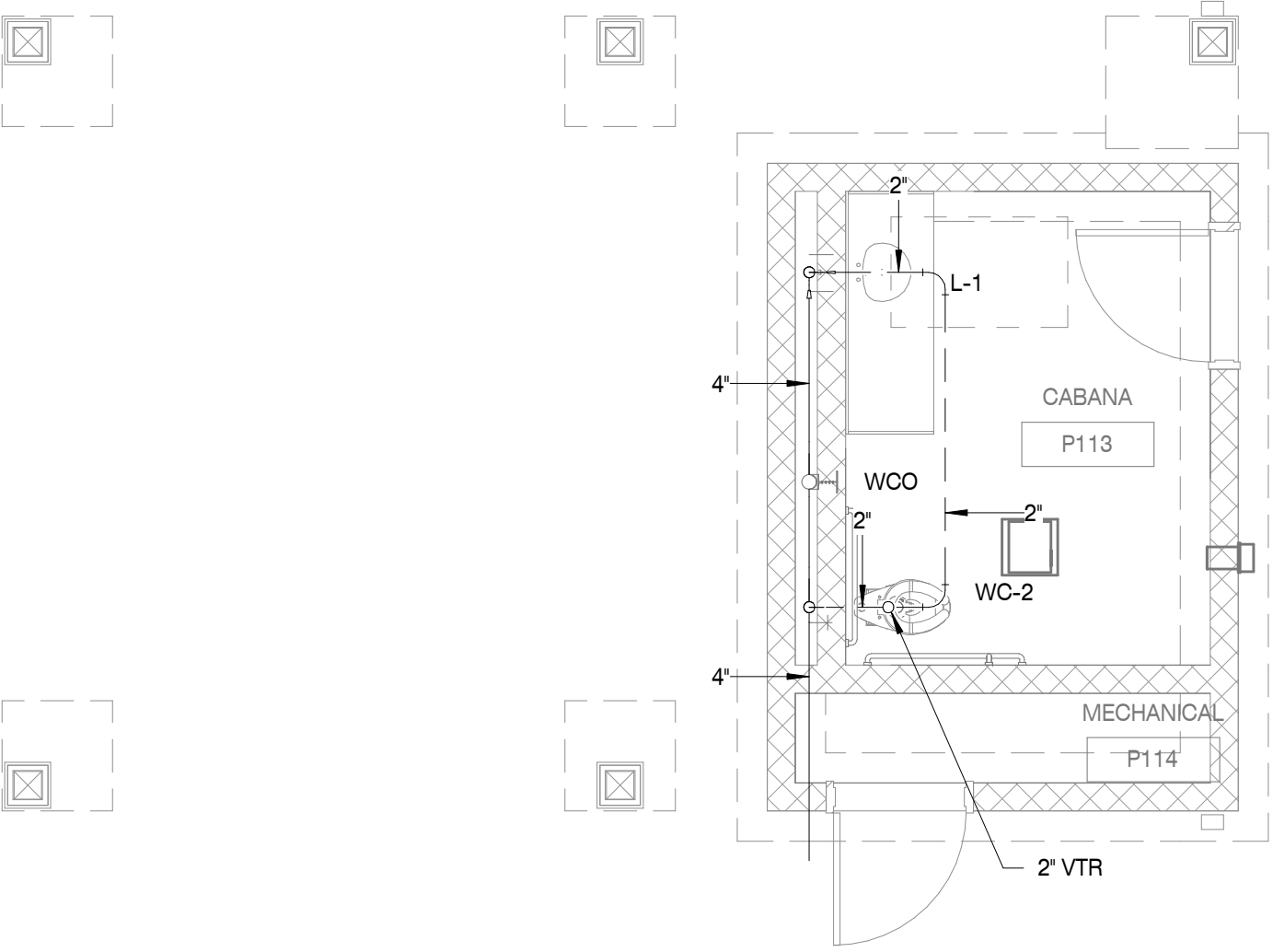
4

3

2

1

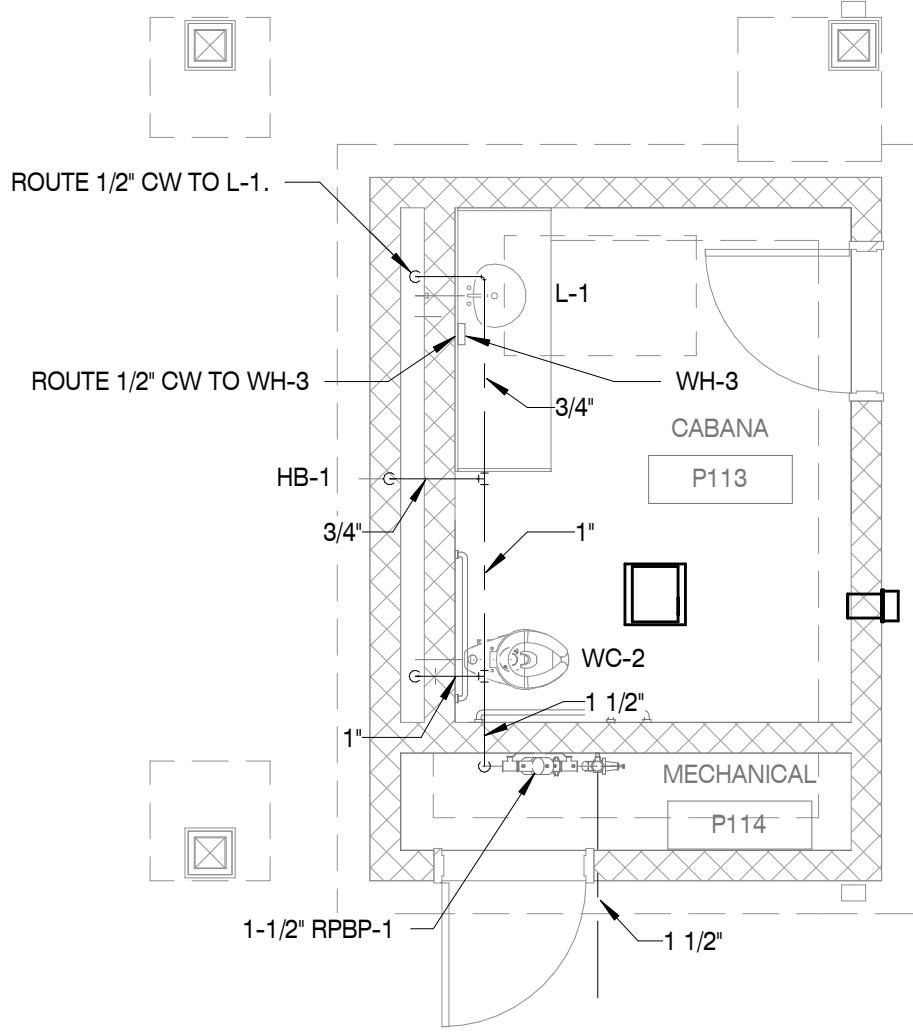
A B C D E F G H J K L M



CABANA FLOOR PLAN - WASTE

SCALE : 1/4" = 1'-0"

1

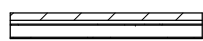


CABANA FLOOR PLAN - WATER

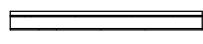
SCALE : 1/4" = 1'-0"

2

WALL LEGEND



EXTERIOR WALL
STONE VENEER OVER HOUSE WRAP OVER 1/2" EXTERIOR SHEATHING ON 2X6 WOOD STUDS W/ 1/2" GYP. BD. ON INTERIOR. PROVIDE R-23 BATT INSULATION. REFER TO EXTERIOR ELEVATIONS FOR STONE VENEER HEIGHTS



EXTERIOR WALL
STONE VENEER OVER HOUSE WRAP OVER 1/2" EXTERIOR SHEATHING ON 2X6 WOOD STUDS W/ 1/2" GYP. BD. ON INTERIOR. PROVIDE R-13 BATT INSULATION. REFER TO EXTERIOR ELEVATIONS FOR BRICK VENEER HEIGHTS



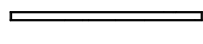
EXTERIOR WALL
SIDING OVER HOUSE WRAP OVER 1/2" EXTERIOR SHEATHING ON 2X6 WD STUDS W/ 1/2" GYP. BD. ON INTERIOR. PROVIDE R-13 BATT INSULATION.



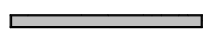
1 HOUR RATED BREEZEWAY WALL
SIDING OVER HOUSE WRAP OVER 1/2" EXTERIOR SHEATHING ON 2X6 WD STUDS W/ 5/8" FIRE RATED GYP. BD. ON INTERIOR. PROVIDE R-13 BATT INSULATION. BUILD IN ACCORDANCE WITH UL#356



1 HOUR TENANT SEPARATION WALL
DOUBLE 2X STUD WALL W/ 1 LAYER FIRE RATED 5/8" GYP. BD. ON OUTER SIDES AND 1 LAYER 1/2" PLYWOOD ON INSIDE OF ONE WALL. PROVIDE TWO LAYERS R-13 BATT INSULATION. BUILD WALL IN ACCORDANCE W/ UL #341.



INTERIOR WALL PARTITION
2X4 WOOD STUDS MAX W/ 1 LAYER OF 1/2" GYP. BD. EACH SIDE.



INTERIOR WALL PARTITION
2X6 WOOD STUDS MAX W/ 1 LAYER OF 1/2" GYP. BD. EACH SIDE.

EJ = EXPANSION JOINT

NOTES:

1. REFER TO STRUCTURAL DRAWINGS FOR STUD SPACING ON ALL WALLS.
2. 1/2" GYP. BD. IS TO BE USED IN LIEU OF 5/8" GYP. BD. AT ALL NON-RATED PARTITIONS
3. SEE A6 SHEETS FOR ENLARGED UNIT PLANS

1A

1B

1 - HOUR RATED WALL, UL# U356

1 - HOUR RATED WALL, UL# U341

MBI

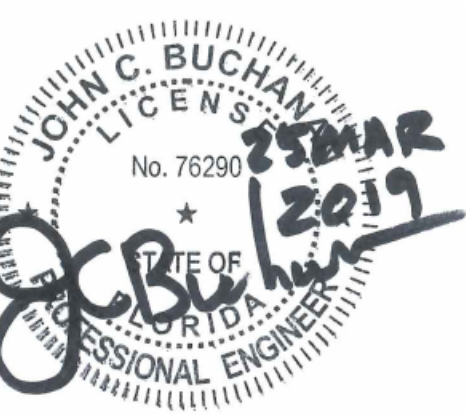
MBI COMPANIES INC.
299 N. WEISGARBER ROAD
KNOXVILLE, TN 37919
PHONE: (865) 584-0999
FAX: (865) 584-5213
WEB: mbicompanies.com

CONSULTANT

MECHANICAL ENGINEER:

MBI COMPANIES INC.
299 N. WEISGARBER ROAD
KNOXVILLE, TN 37919
PHONE: (865) 584-0999
FAX: (865) 584-5213
WEB: mbicompanies.com

SEAL



COPYRIGHT © MBI COMPANIES INC. 2019

THE DESIGN PROFESSIONAL DENIES ANY AND ALL RESPONSIBILITY AND LIABILITY FOR PROBLEMS WHICH ARISE FROM FAILURE TO FOLLOW THESE PLANS, SPECIFICATIONS AND THE DESIGN INTENT THEY CONVEY, OR PROBLEMS WHICH ARISE FROM OTHERS' FAILURE TO OBTAIN AND/ OR FOLLOW THE DESIGN PROFESSIONAL'S GUIDANCE WITH RESPECT TO ANY ERRORS, OMISSIONS, INCONSISTENCIES, AMBIGUITIES OR CONFLICTS WHICH ARE ALLEGED.

PROJECT INFORMATION

PROJECT:

WESTWOOD AT
WINTER HAVEN
APARTMENTS

PROJECT ADDRESS:

Avenue G
Winter Haven, FL 36801
HUD# 067-35554

PROJECT NO.: 180888

ACTIVE DESIGN PHASE

- ☐ FOR REVIEW ONLY
- ☐ FOR PERMITTING ONLY
- ☐ SCHEMATIC DESIGN
- ☐ DESIGN DEVELOPMENT
- ☐ CONSTRUCTION BIDDING
- ☒ CONSTRUCTION DOCUMENTS
- ☐ AS-BUILT RECORD SET

REVISION INFORMATION

NO. DATE DESCRIPTION

KEY PLAN



SHEET INFORMATION

SHEET ISSUED: 03-25-19
DESIGNED BY: JIEJ
DRAWN BY: JIEJ
REVIEWED BY: JCB
SHEET TITLE:

CABANA FLOOR PLAN -
PLUMBING

SHEET NO.:

P106