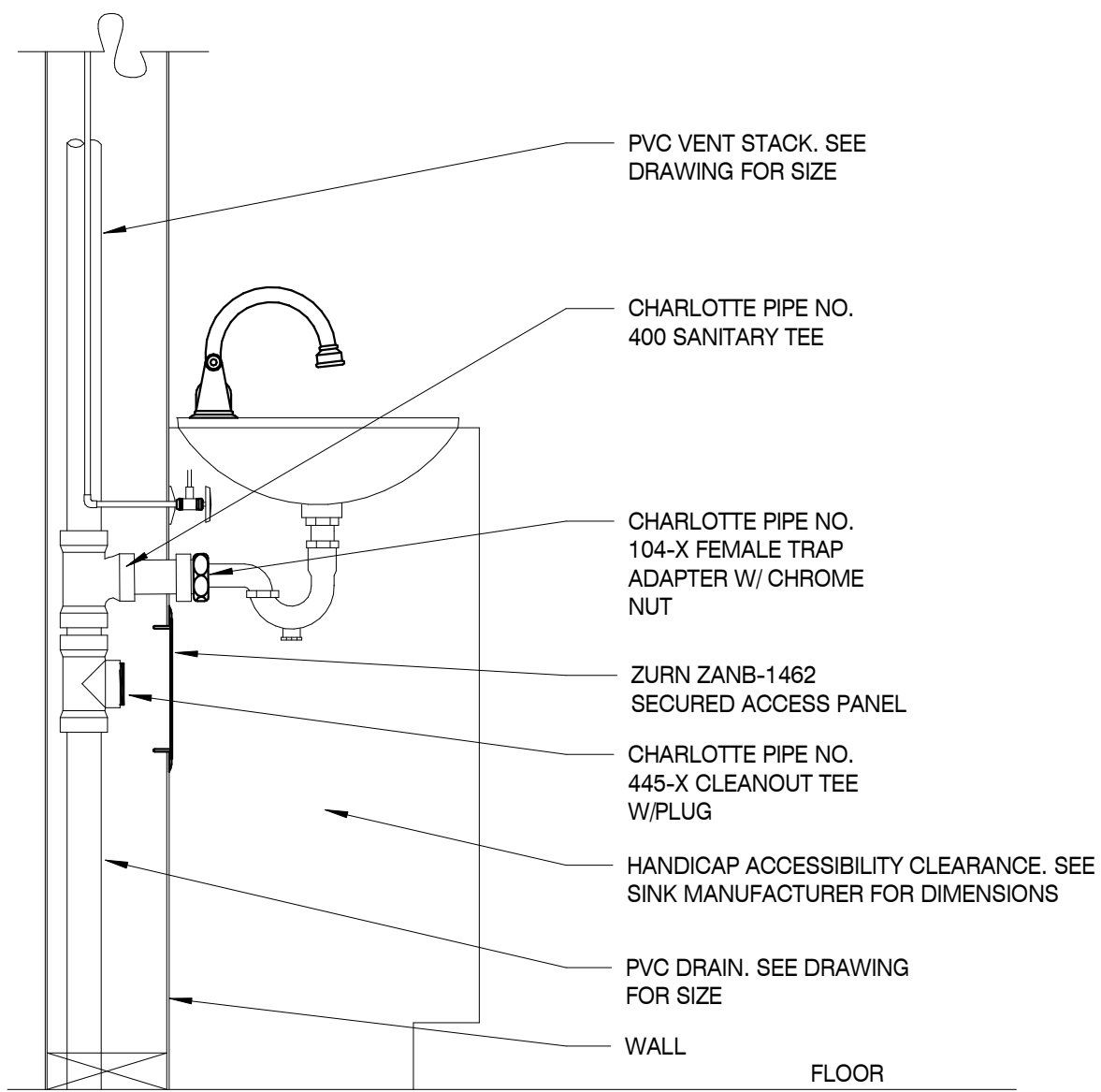


C:\Users\james\Documents\180888\_Annotation\_james\PEA03.vrt  
5/2/2019 4:07:03 PM

ARCH D

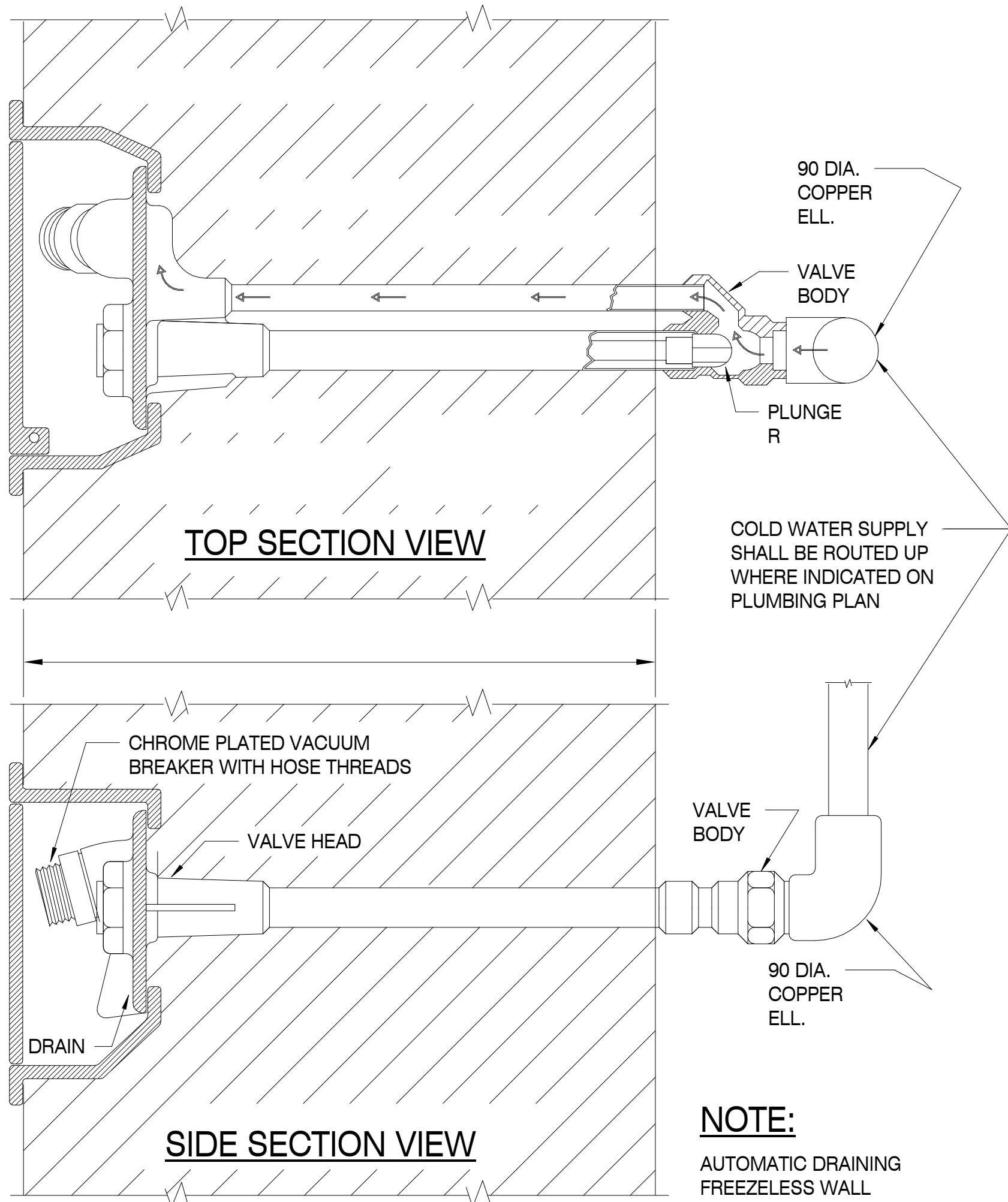
A B C D E F G H J K L M



STACK CLEANOUT DETAIL

SCALE : 1/8" = 1'-0"

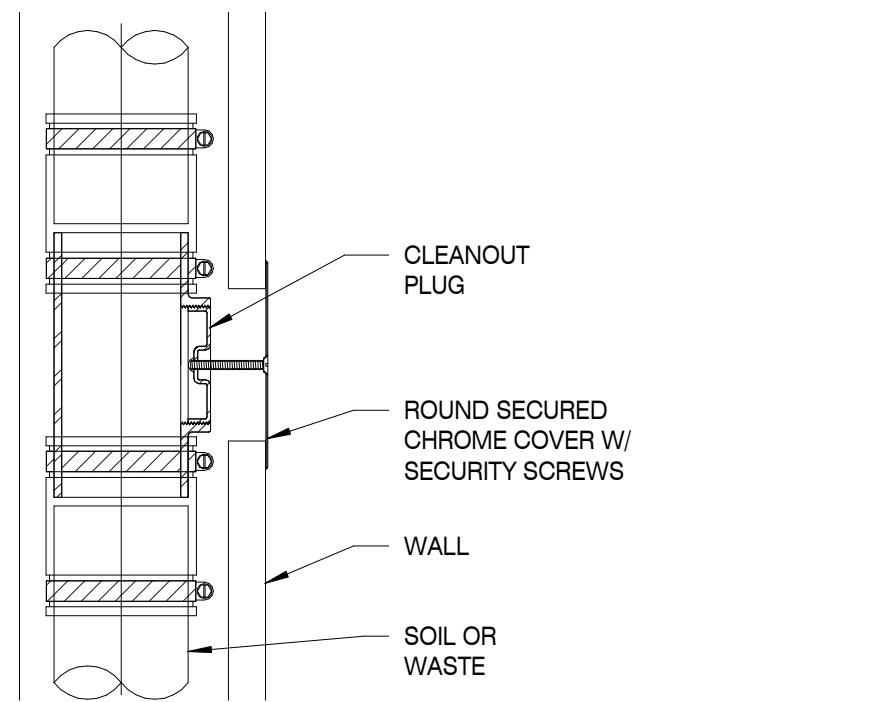
6



WALL HYDRANT

SCALE :N.T.S.

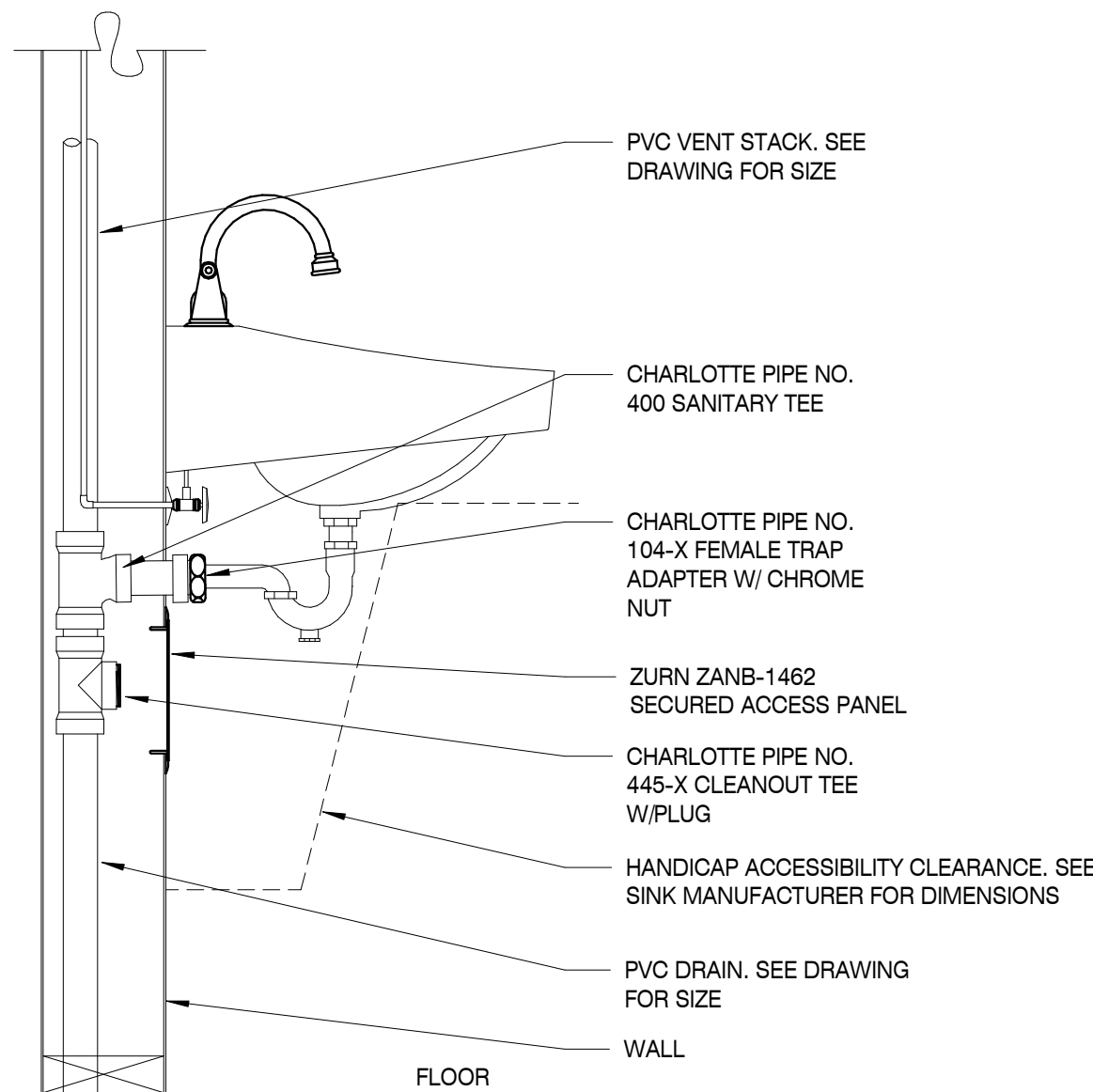
3



WALL CLEANOUT

SCALE :N.T.S.

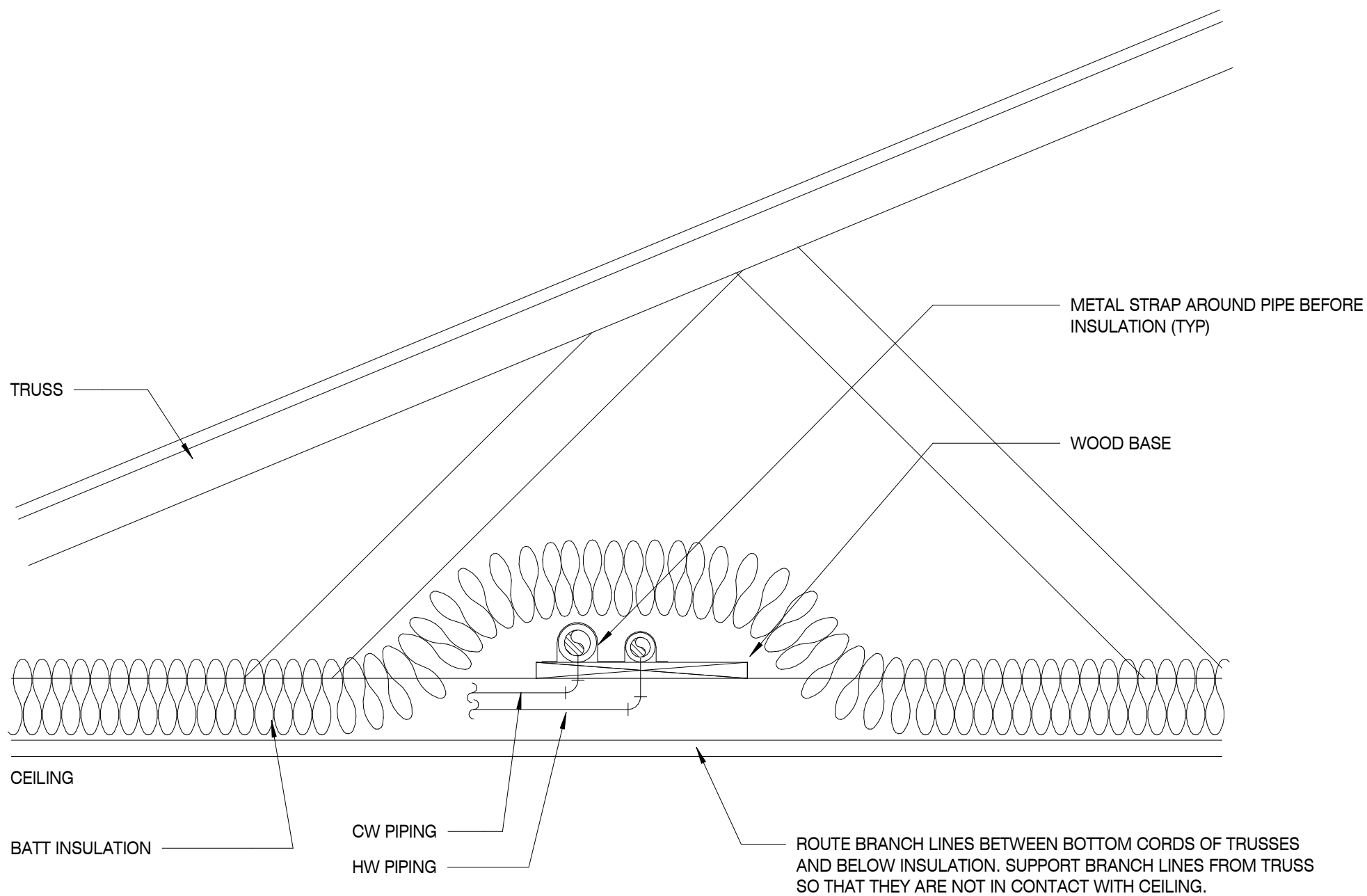
1



STACK CLEANOUT DETAIL

SCALE : 1/8" = 1'-0"

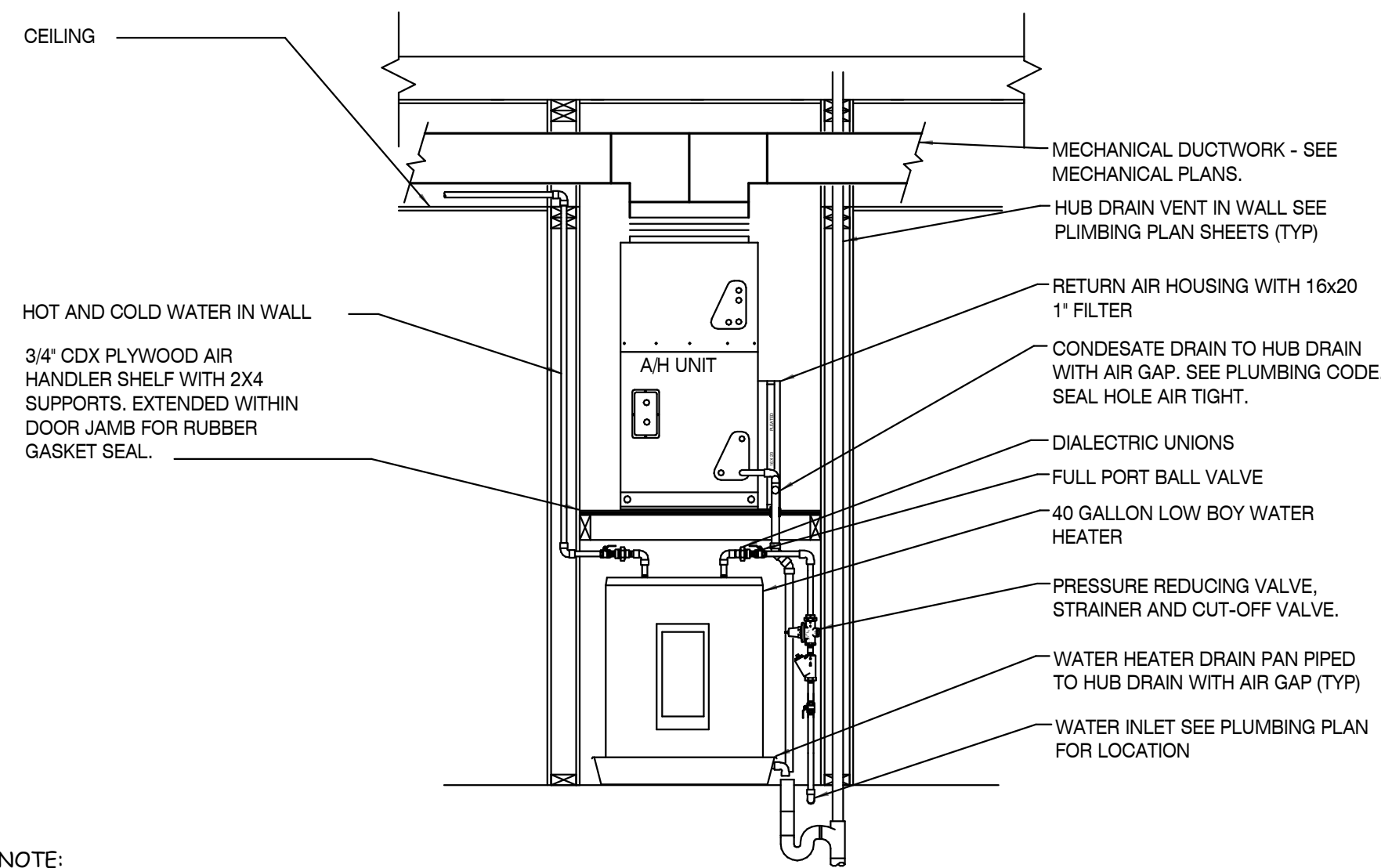
2



WATER PIPING ABOVE CEILING

SCALE :N.T.S.

7

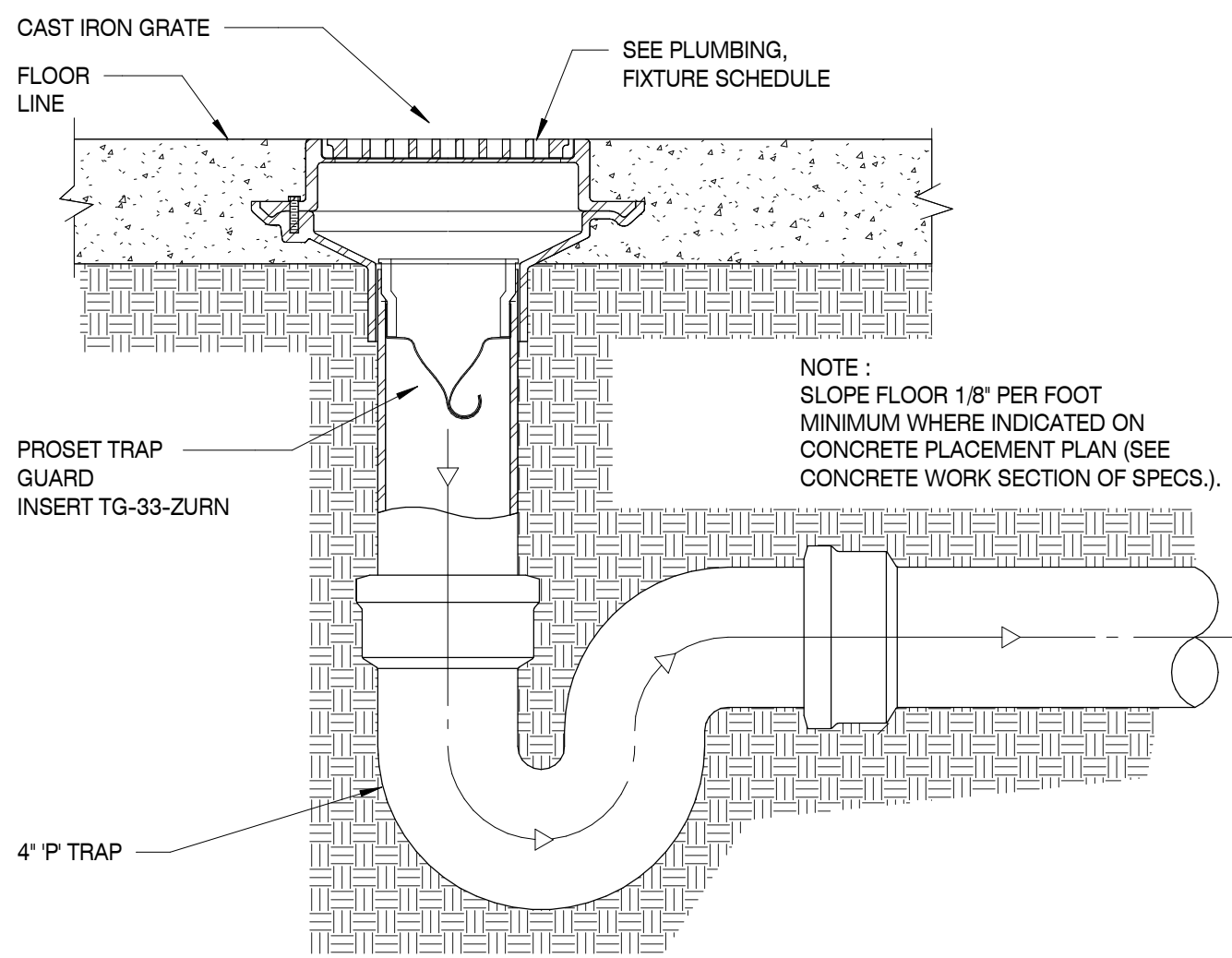


NOTE:  
RELIEF VALVE SHALL BE PIPED TO DRAIN PAN WITH AIR GAP. (TYP)

MECHANICAL CLOSET DETAIL

SCALE :N.T.S.

5



FLOOR DRAIN DETAIL

SCALE :N.T.S.

4

MBI

MBI COMPANIES INC.  
100 COLONIAL CENTER SUITE 230  
LAKE MARY, FL 32746  
PHONE: (407) 585-0330  
FAX: (407) 585-0336  
WEB: mbicompanies.com  
ARCHITECTURE NO.: AA26000828  
INTERIORS NO.: IB26000665

CONSULTANT  
MECHANICAL ENGINEER:

MBI COMPANIES INC.  
298 N. WEISGARBER ROAD  
KNOXVILLE, TN 37919  
PHONE: (865) 584-0999  
FAX: (865) 584-5213  
WEB: mbicompanies.com

SEAL



COPYRIGHT © MBI COMPANIES INC. 2019  
THE DESIGN PROFESSIONAL DENIES ANY AND ALL RESPONSIBILITY AND LIABILITY FOR PROBLEMS WHICH ARISE FROM FAILURE TO FOLLOW THESE PLANS, SPECIFICATIONS AND THE DESIGN INTENT THEY CONVEY, OR PROBLEMS WHICH ARISE FROM OTHERS' FAILURE TO OBTAIN AND/OR FOLLOW THE DESIGN PROFESSIONAL'S GUIDANCE WITH RESPECT TO ANY ERRORS, OMISSIONS, INCONSISTENCIES, AMBIGUITIES OR CONFLICTS WHICH ARE ALLEGED.

PROJECT INFORMATION

PROJECT:

WESTWOOD AT  
WINTER HAVEN  
APARTMENTS

PROJECT ADDRESS:

Avenue G  
Winter Haven, FL 36801  
HUD# 067-35554

PROJECT NO.: 180888

ACTIVE DESIGN PHASE

- ☐ FOR REVIEW ONLY
- ☐ FOR PERMITTING ONLY
- ☐ SCHEMATIC DESIGN
- ☐ DESIGN DEVELOPMENT
- ☐ CONSTRUCTION BIDDING
- ☒ CONSTRUCTION DOCUMENTS
- ☐ AS-BUILT RECORD SET

REVISION INFORMATION

NO.	DATE	DESCRIPTION

KEY PLAN

SHEET INFORMATION

SHEET ISSUED: 03-25-19  
DESIGNED BY: RTB  
DRAWN BY: RTB  
REVIEWED BY: JCB  
SHEET TITLE:

PLUMBING DETAILS

SHEET NO.:

P201