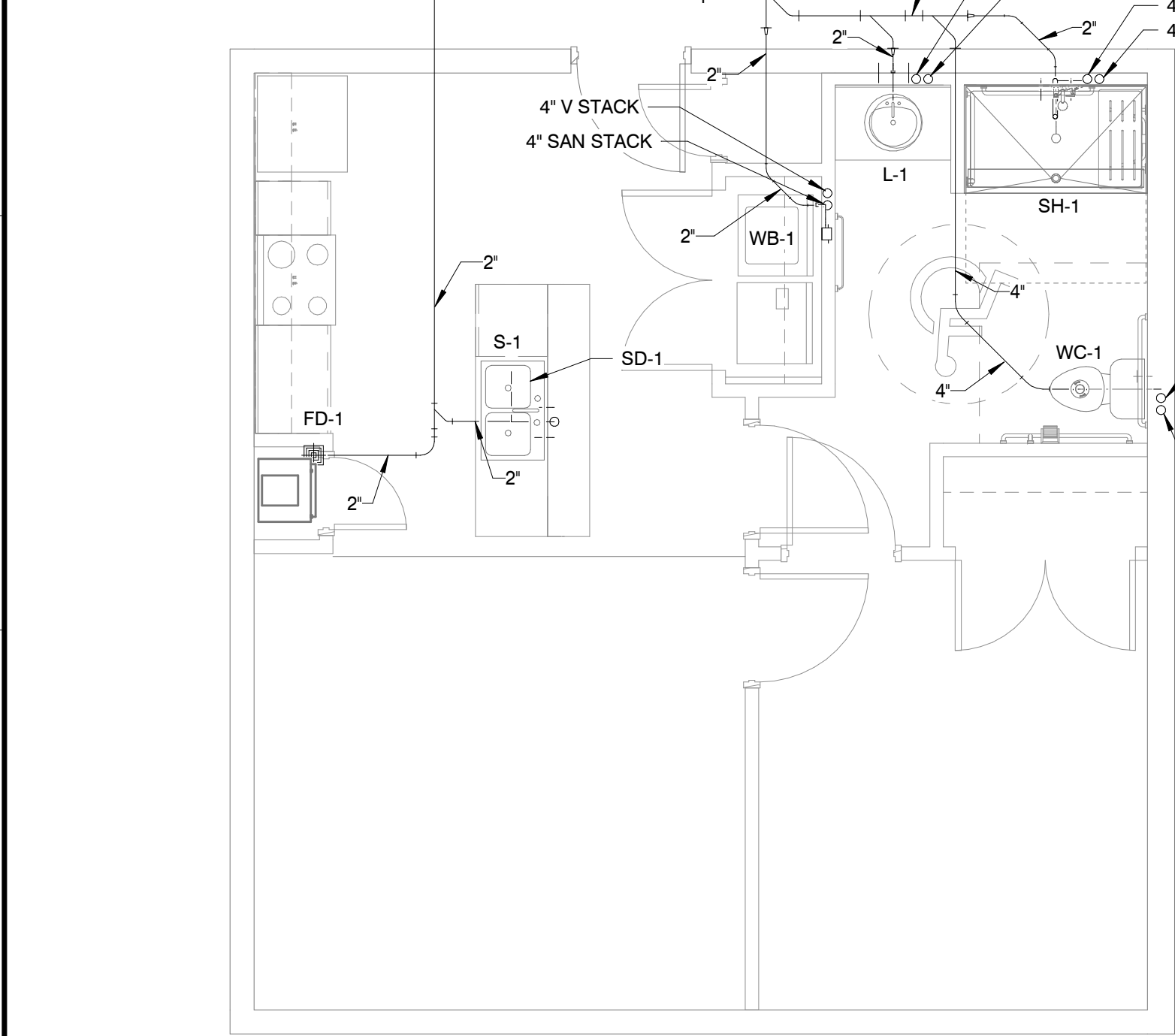


C:\Users\jcb\Documents\180888\_Annotation\_jcb\PEA03.rvt  
5/2/2019 4:07:25 PM

ARCH D

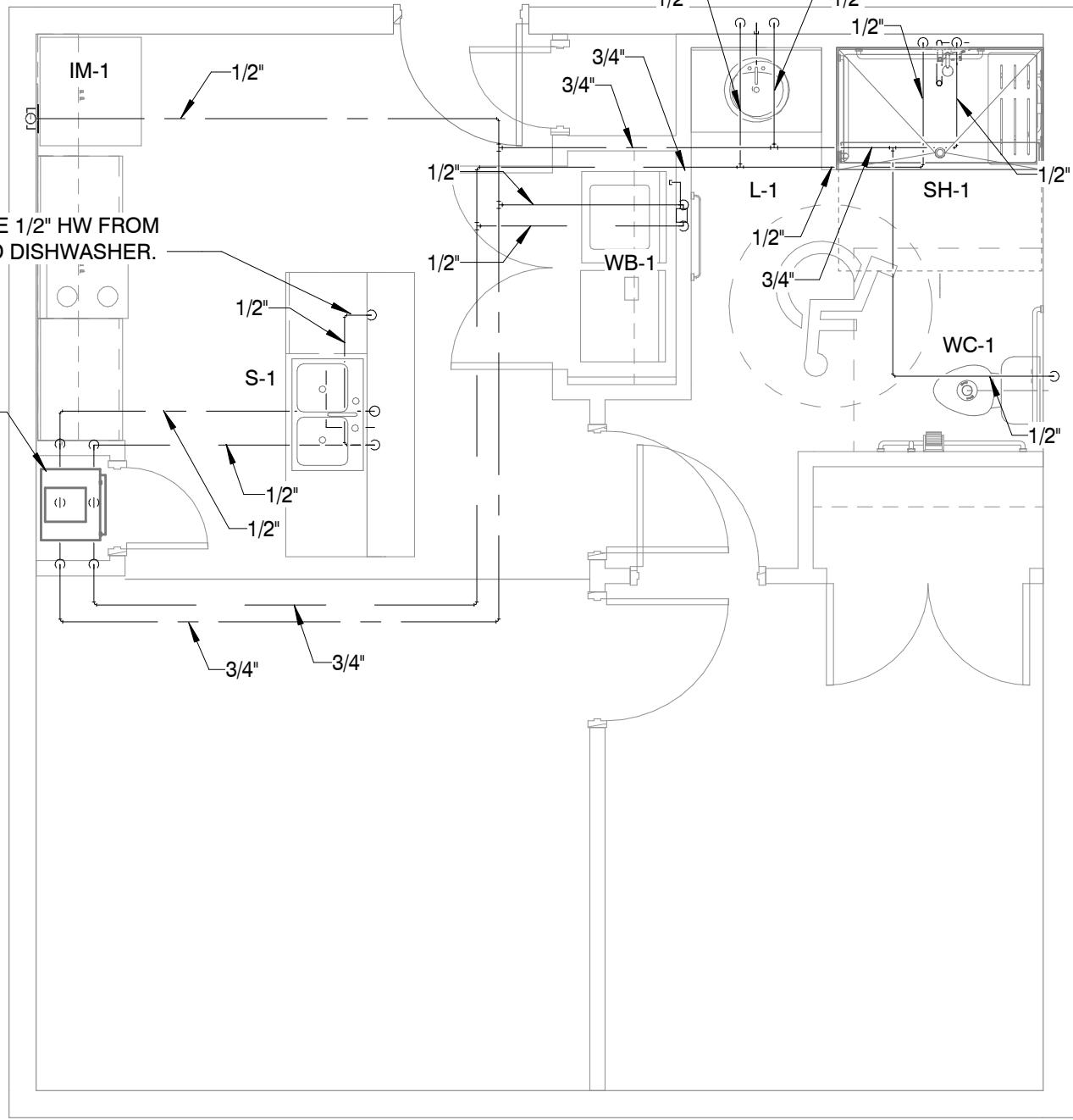
A B C D E F G H J K L M



TYPICAL 1 BR ADA - SANITARY

SCALE : 1/4" = 1'-0"

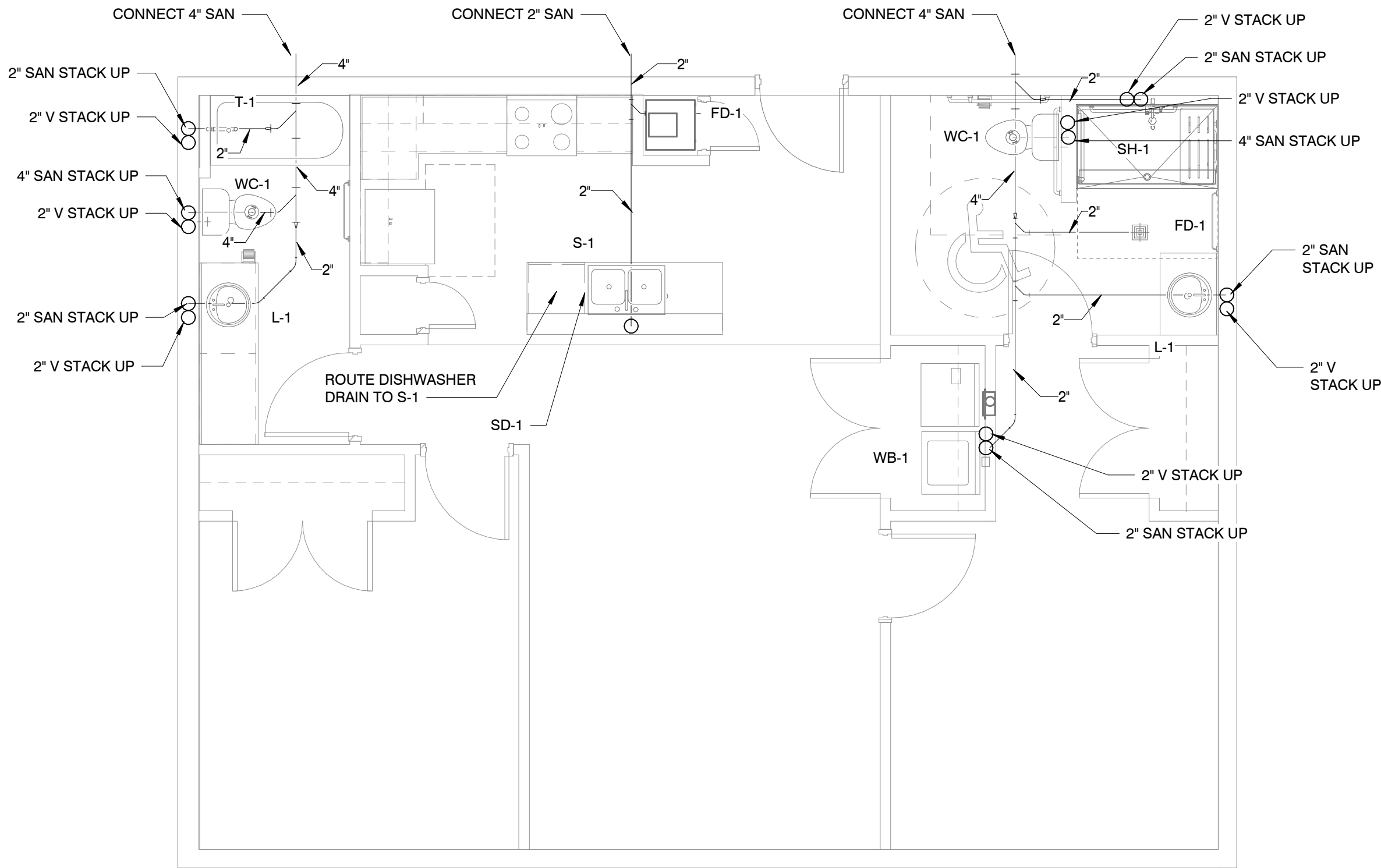
1



TYPICAL 1 BR ADA - WATER

SCALE : 1/4" = 1'-0"

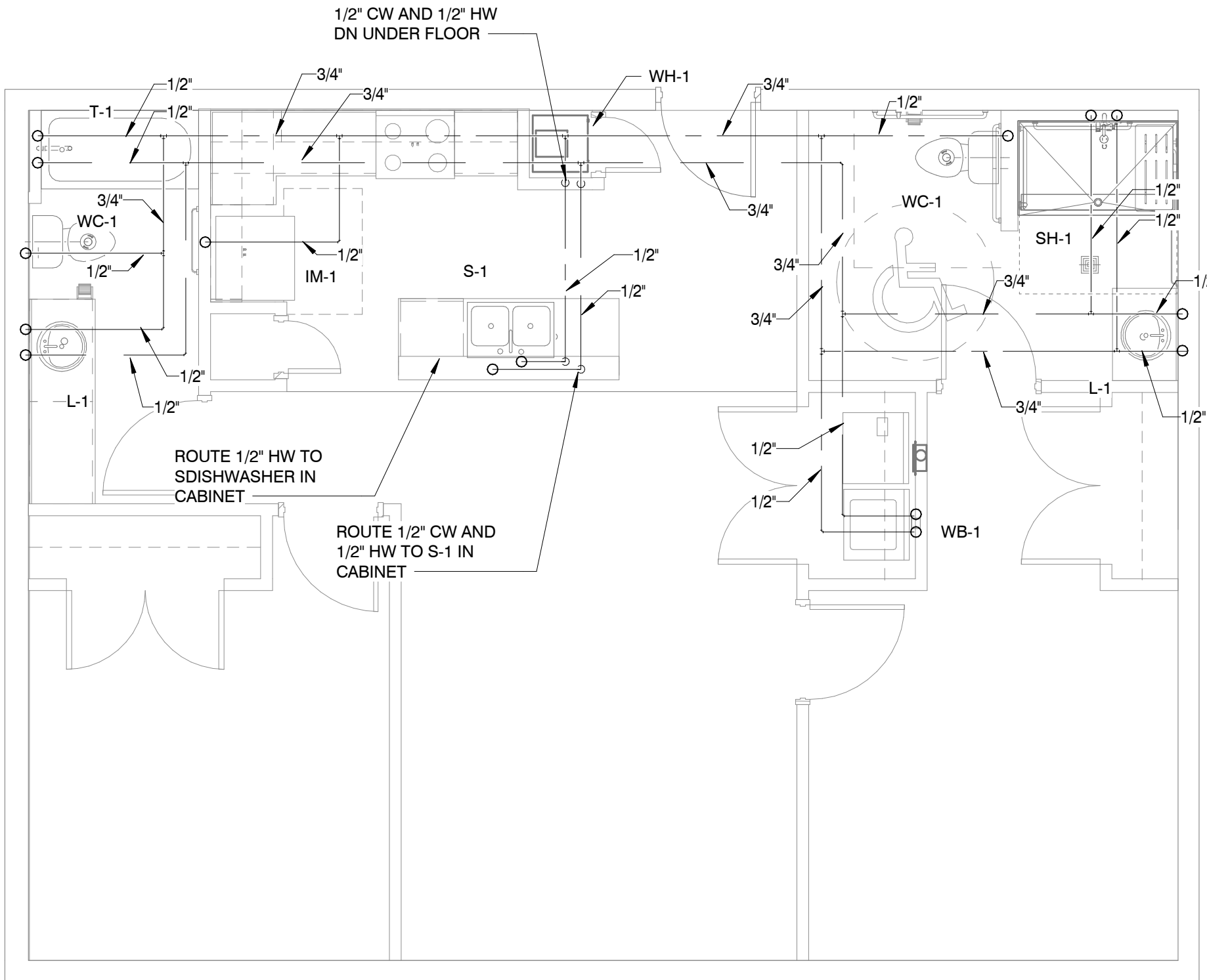
2



TYPICAL 2 BR ADA - SANITARY

SCALE : 1/4" = 1'-0"

3



TYPICAL 2 BR ADA - WATER

SCALE : 1/4" = 1'-0"

4

MBI

MBI COMPANIES INC.  
299 N. WEISGARBER ROAD  
KNOXVILLE, TN 37919  
PHONE: (865) 584-0999  
FAX: (865) 584-5213  
WEB: mbicompanies.com

CONSULTANT  
MECHANICAL ENGINEER:

MBI COMPANIES INC.  
299 N. WEISGARBER ROAD  
KNOXVILLE, TN 37919  
PHONE: (865) 584-0999  
FAX: (865) 584-5213  
WEB: mbicompanies.com

SEAL



COPYRIGHT © MBI COMPANIES INC. 2019  
THE DESIGN PROFESSIONAL DENIES ANY AND ALL  
RESPONSIBILITY AND LIABILITY FOR PROBLEMS WHICH  
ARISE FROM FAILURE TO FOLLOW THESE PLANS,  
SPECIFICATIONS AND THE DESIGN INTENT THEY  
CONVEY, OR PROBLEMS WHICH ARISE FROM OTHERS'  
FAILURE TO OBTAIN AND/OR FOLLOW THE DESIGN  
PROFESSIONAL'S GUIDANCE WITH RESPECT TO ANY  
ERRORS, OMISSIONS, INCONSISTENCIES, AMBIGUITIES  
OR CONFLICTS WHICH ARE ALLEGED.

PROJECT INFORMATION

PROJECT:

WESTWOOD AT  
WINTER HAVEN  
APARTMENTS

PROJECT ADDRESS:

Avenue G  
Winter Haven, FL 36801  
HUD# 067-35554

PROJECT NO.: 180888

ACTIVE DESIGN PHASE

- ☐ FOR REVIEW ONLY  
☐ FOR PERMITTING ONLY  
☐ SCHEMATIC DESIGN  
☐ DESIGN DEVELOPMENT  
☐ CONSTRUCTION BIDDING  
☒ CONSTRUCTION DOCUMENTS  
☐ AS-BUILT RECORD SET

REVISION INFORMATION

NO.	DATE	DESCRIPTION

KEY PLAN

SHEET INFORMATION

SHEET ISSUED: 03-25-19  
DESIGNED BY: JEJ  
DRAWN BY: JEJ  
REVIEWED BY: JCB  
SHEET TITLE:

ENLARGED ADA  
BEDROOMS

SHEET NO.:

P401