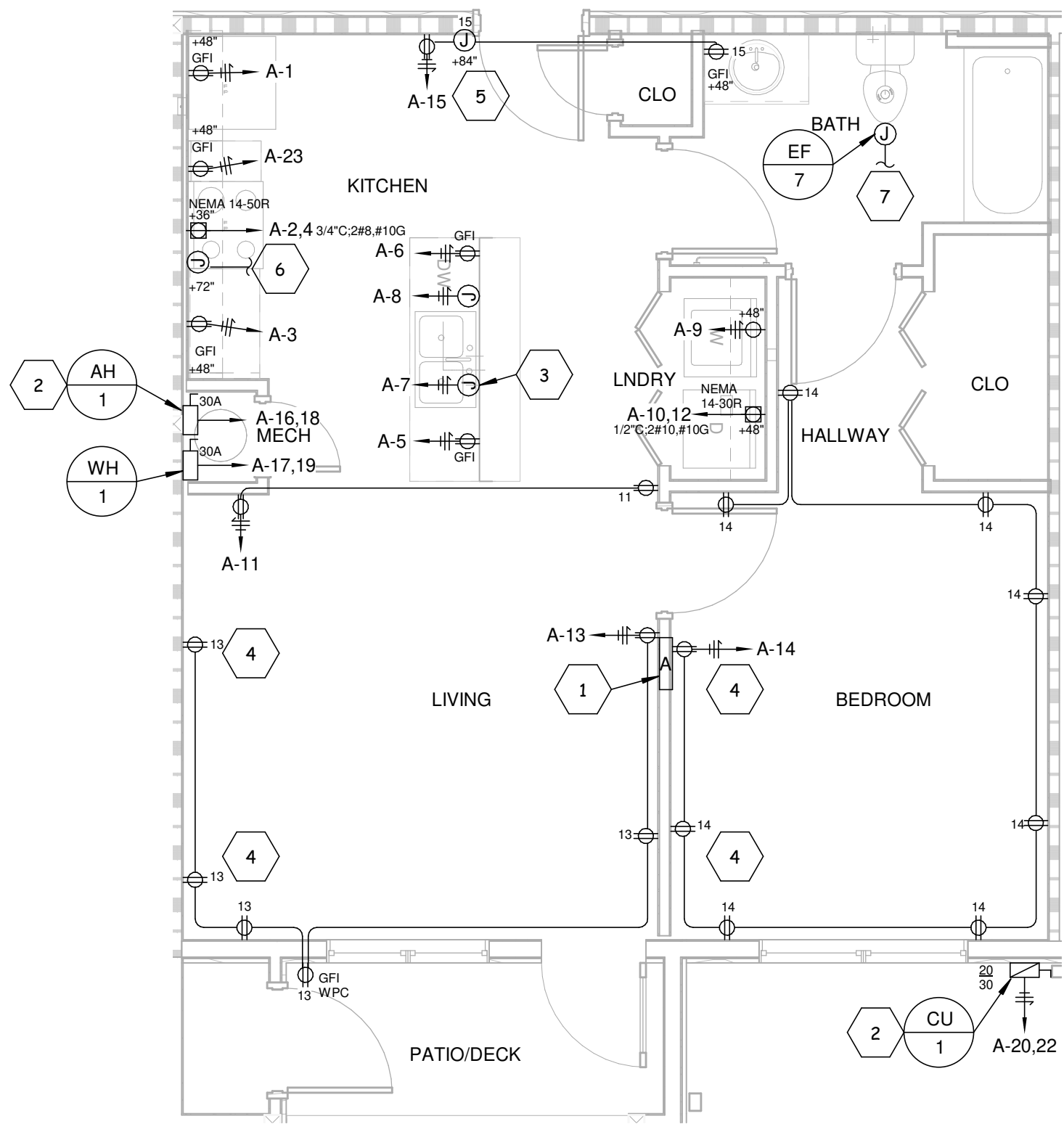


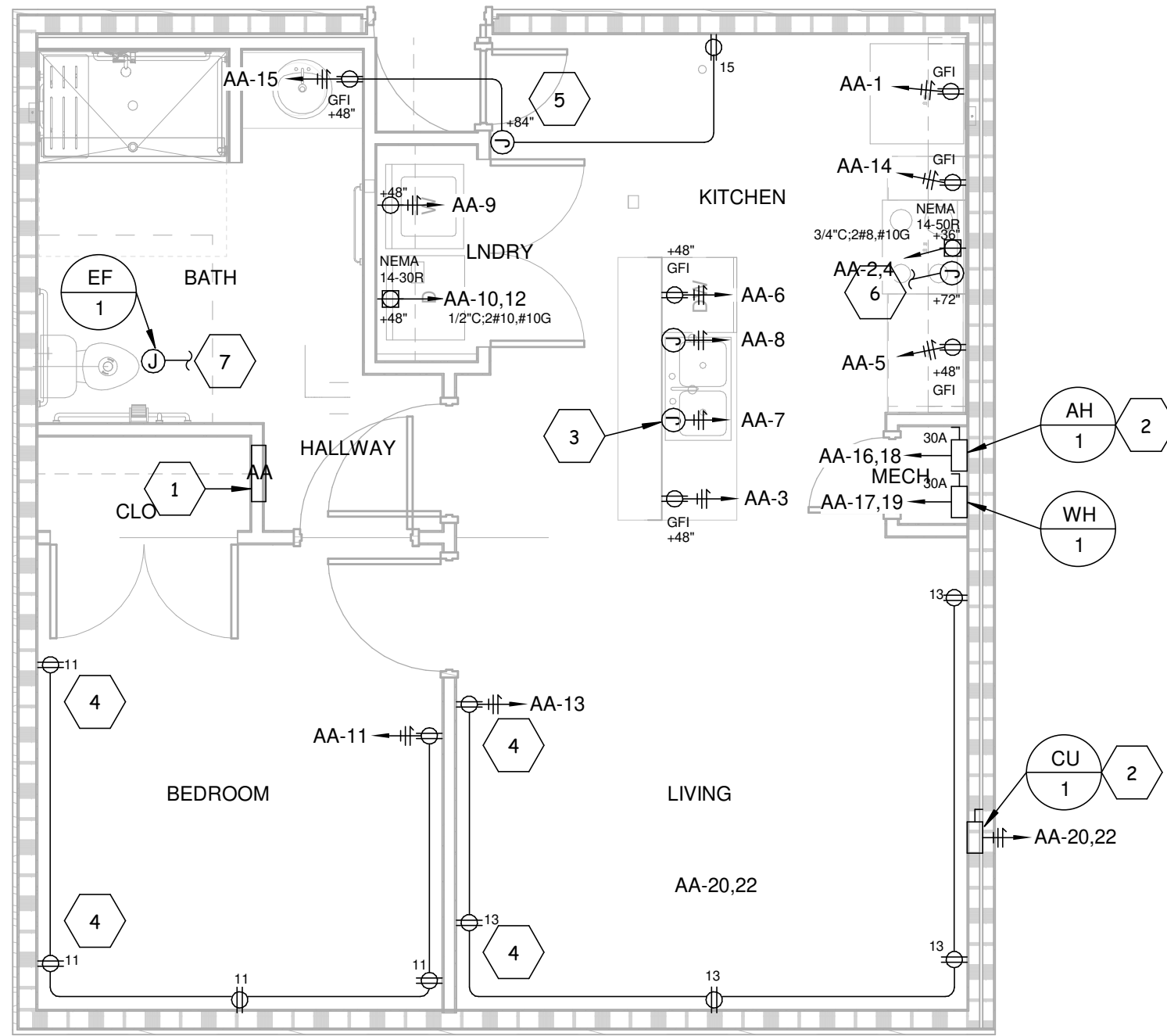
P:\DWG\2014\03\161\08088_Winterhaven Apartments\08 Electrical\08088_Electrical.rvt
5/8/2014 10:22:22 PM



TYP. UNIT PLAN 1BR - POWER

SCALE: 1/4" = 1'-0"

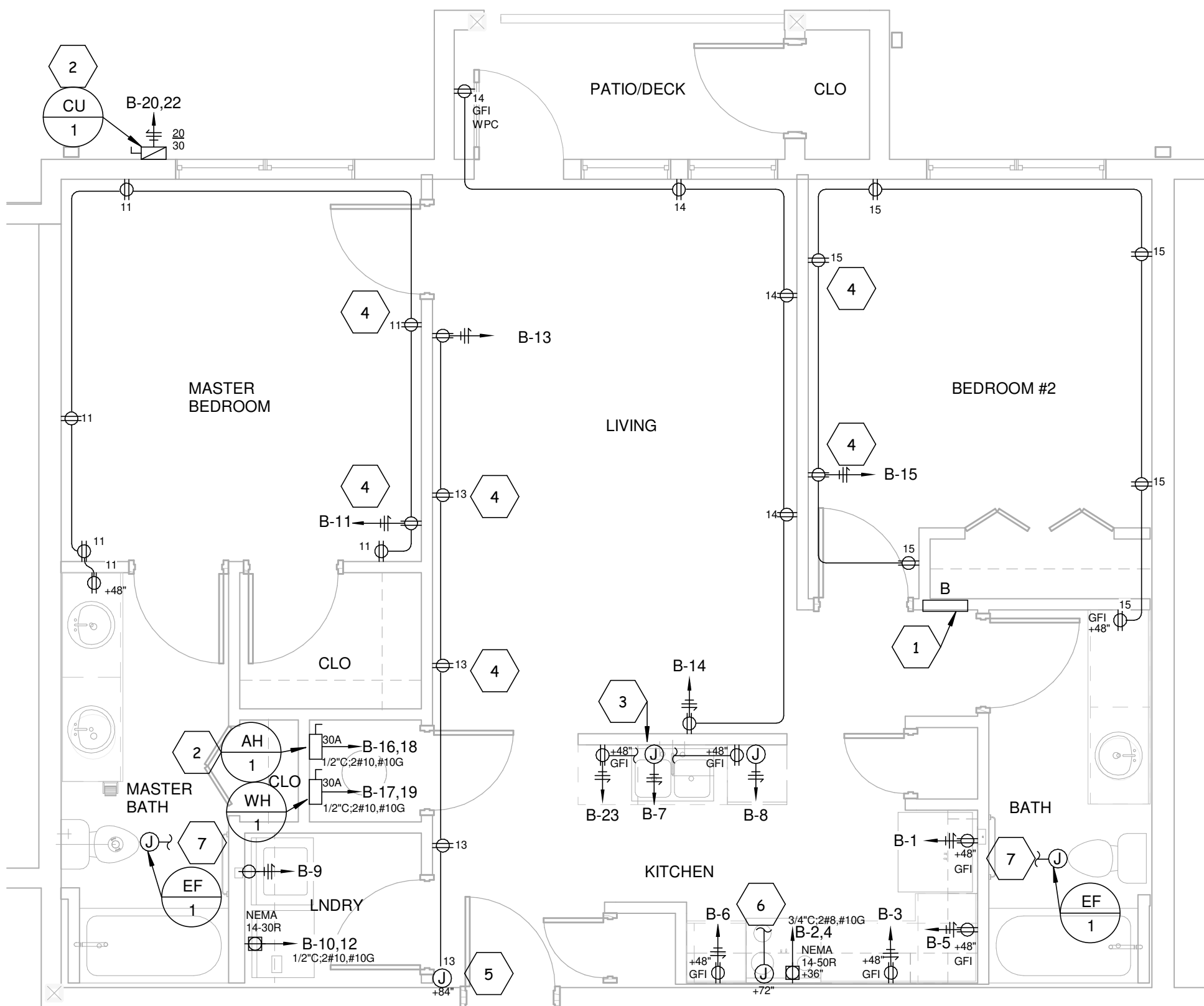
1



TYP. UNIT PLAN 1BR ADA - POWER

SCALE: 1/4" = 1'-0"

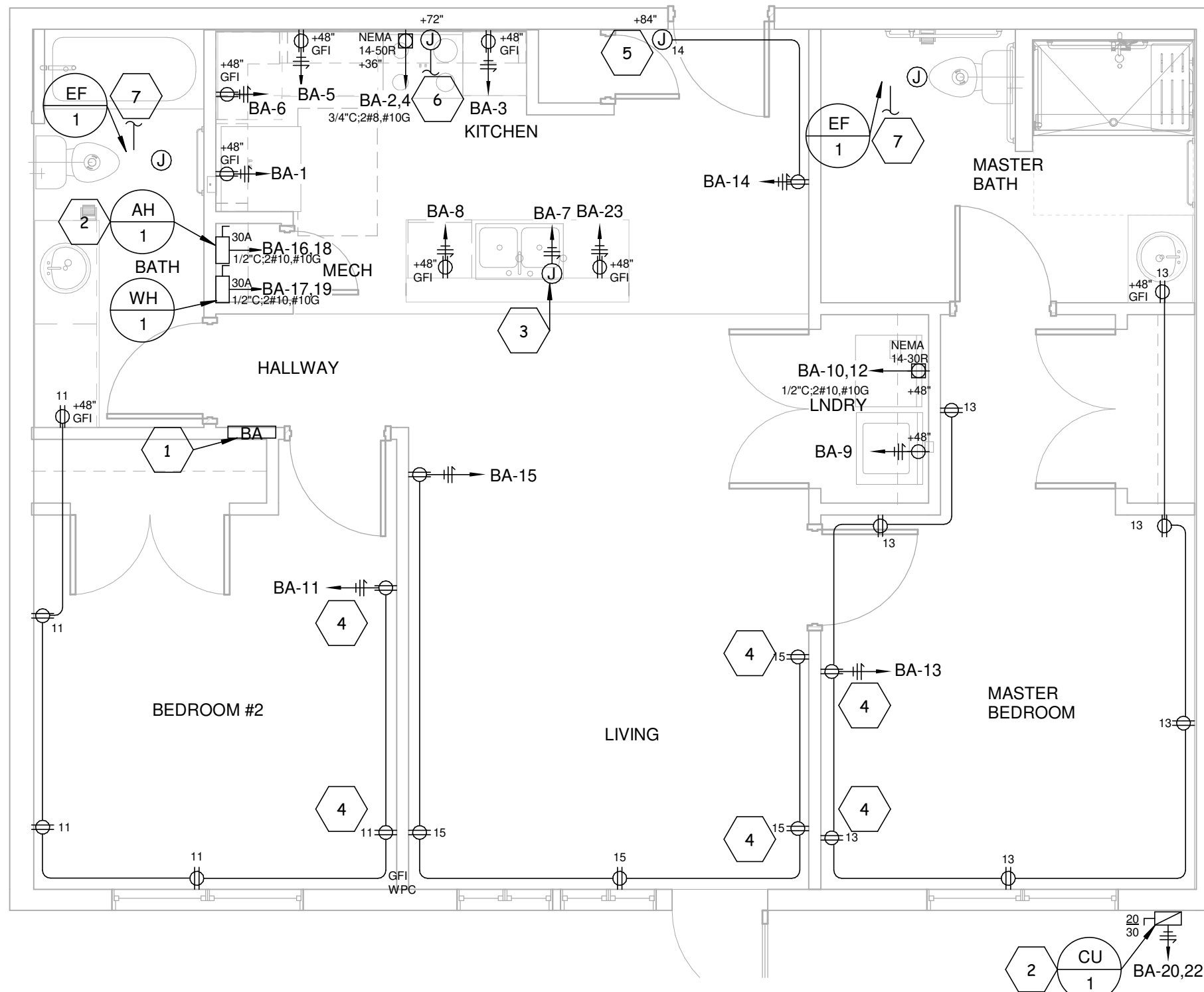
2



TYP. UNIT PLAN 2BR - POWER

SCALE: 1/4" = 1'-0"

3



TYP. UNIT PLAN 2BR ADA - POWER

SCALE: 1/4" = 1'-0"

4

GENERAL SHEET NOTES

- SEE SHEET E001 FOR ELECTRICAL LEGEND AND GENERAL NOTES.
- IN DWELLING UNITS ALL 15A AND 20A, 120V BRANCH CIRCUITS (OTHER THAN GFCI TYPE) SHALL BE PROTECTED BY A LISTED AFCI DEVICE OF THE COMBINATION TYPE PER NEC 210.12. AND BE TAMPER RESISTANT PER NEC 406.11.
- SEE OVERALL BUILDING PLANS ON SHEETS E101 THROUGH E105 FOR INDIVIDUAL UNIT LAYOUT FOR EACH BUILDING TYPE.
- SEE MECHANICAL PLANS FOR HVAC CONTROL TYPES, QUANTITIES, AND LOCATIONS.
- COORDINATE KITCHEN COUNTER RECEPTACLE HEIGHTS. RECEPTACLES SHALL BE MOUNTED 3" ABOVE BACKSPASH, ORIENT RECEPTACLES HORIZONTALLY IF REQUIRED PER FIELD CONDITIONS.

KEYED SHEET NOTES

- PANELBOARD "A" IS TYPICAL FOR ALL ONE BEDROOM UNITS. PANELBOARD "AA" IS TYPICAL FOR ALL ONE BEDROOM ADA UNITS. PANELBOARD "B" IS TYPICAL FOR ALL TWO BEDROOM UNITS. PANELBOARD "BA" IS TYPICAL FOR ALL TWO BEDROOM ADA UNITS. PANELBOARD "C" IS TYPICAL FOR ALL THREE BEDROOM UNITS. PANELBOARD "CA" IS TYPICAL FOR ALL THREE BEDROOM ADA UNITS.
- HEAT PUMP SYSTEM "HP-1" WITH INDOOR AIR HANDLING UNIT "AH-1" AND OUTDOOR CONDENSING UNIT "CU-1" ARE TYPICAL FOR ALL UNITS. SEE MECHANICAL PLANS FOR ADDITIONAL INFORMATION.
- PROVIDE SWITCH NEXT TO SINK ABOVE COUNTERTOP BACKSPASH FOR GARBAGE DISPOSAL.
- REMOVE RECEPTACLE TAB TO ALLOW BOTTOM HALF OF RECEPTACLE TO BE CONTROLLED BY A WALL SWITCH. SEE LIGHTING PLANS FOR SWITCH LOCATIONS.
- PROVIDE JUNCTION BOX FOR DOORBELL BUZZER AND TRANSFORMER POWER. MOUNT PUSH BUTTON ON OUTSIDE OF UNIT ENTRANCE DOOR.
- PROVIDE JUNCTION BOX FOR POWER TO RANGE EXHAUST HOOD. CONNECT TO LIGHTING CIRCUIT. HOOD SHALL HAVE LIGHT AND LIGHT SWITCH. IN ADA UNITS MOUNT HOOD SWITCHES AT 48" A.F.F.
- PROVIDE JUNCTION BOX FOR POWER TO BATHROOM EXHAUST FAN. CONNECT TO BATHROOM LIGHTING CIRCUIT AND SWITCH.

MBI

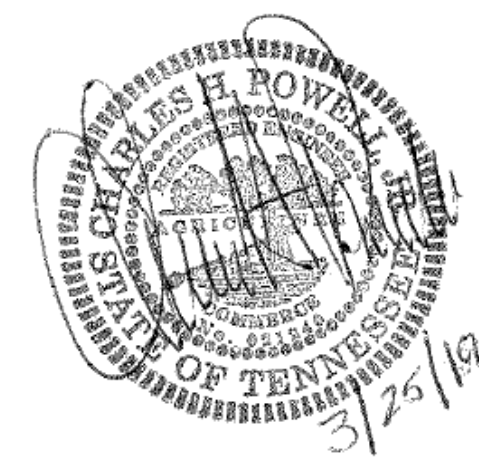
MBI COMPANIES INC.
299 N. WEISGARBER ROAD
KNOXVILLE, TN 37919
PHONE: (865) 584-0999
FAX: (865) 584-5213
WEB: mbicompanies.com

ELECTRICAL ENGINEER:

CHARLES H. POWELL JR.

MBI COMPANIES INC.
299 N. WEISGARBER RD
KNOXVILLE, TN 37919
PHONE: (865) 584-0999
FAX: (865) 584-5213
WEB: mbicompanies.com

SEAL



COPYRIGHT © MBI COMPANIES INC. 2019

THE DESIGN PROFESSIONAL DENIES ANY AND ALL RESPONSIBILITY AND LIABILITY FOR PROBLEMS WHICH ARISE FROM FAILURE TO FOLLOW THESE PLANS, SPECIFICATIONS AND THE DESIGN INTENT THEY CONVEY, OR PROBLEMS WHICH ARISE FROM OTHERS' FAILURE TO OBTAIN AND/OR FOLLOW THE DESIGN PROFESSIONAL'S GUIDANCE WITH RESPECT TO ANY ERRORS, OMISSIONS, INCONSISTENCIES, AMBIGUITIES OR CONFLICTS WHICH ARE ALLEGED.

PROJECT INFORMATION

PROJECT:

WESTWOOD AT WINTER HAVEN

PROJECT ADDRESS:

xxxx Avenue G
Winter Haven, FL 36901

PROJECT NO.: 180888

ACTIVE DESIGN PHASE

- ☐ FOR REVIEW ONLY
☐ FOR PERMITTING ONLY
☐ SCHEMATIC DESIGN
☐ DESIGN DEVELOPMENT
☐ CONSTRUCTION BIDDING
☒ CONSTRUCTION DOCUMENTS
☐ AS-BUILT RECORD SET

REVISION INFORMATION

NO.	DATE	DESCRIPTION

KEY PLAN

SHEET INFORMATION

SHEET ISSUED: 3-25-19
DESIGNED BY: WAH
DRAWN BY: WAH
REVIEWED BY: CHP
SHEET TITLE:

TYPICAL UNIT PLANS - POWER

SHEET NO.:

E106