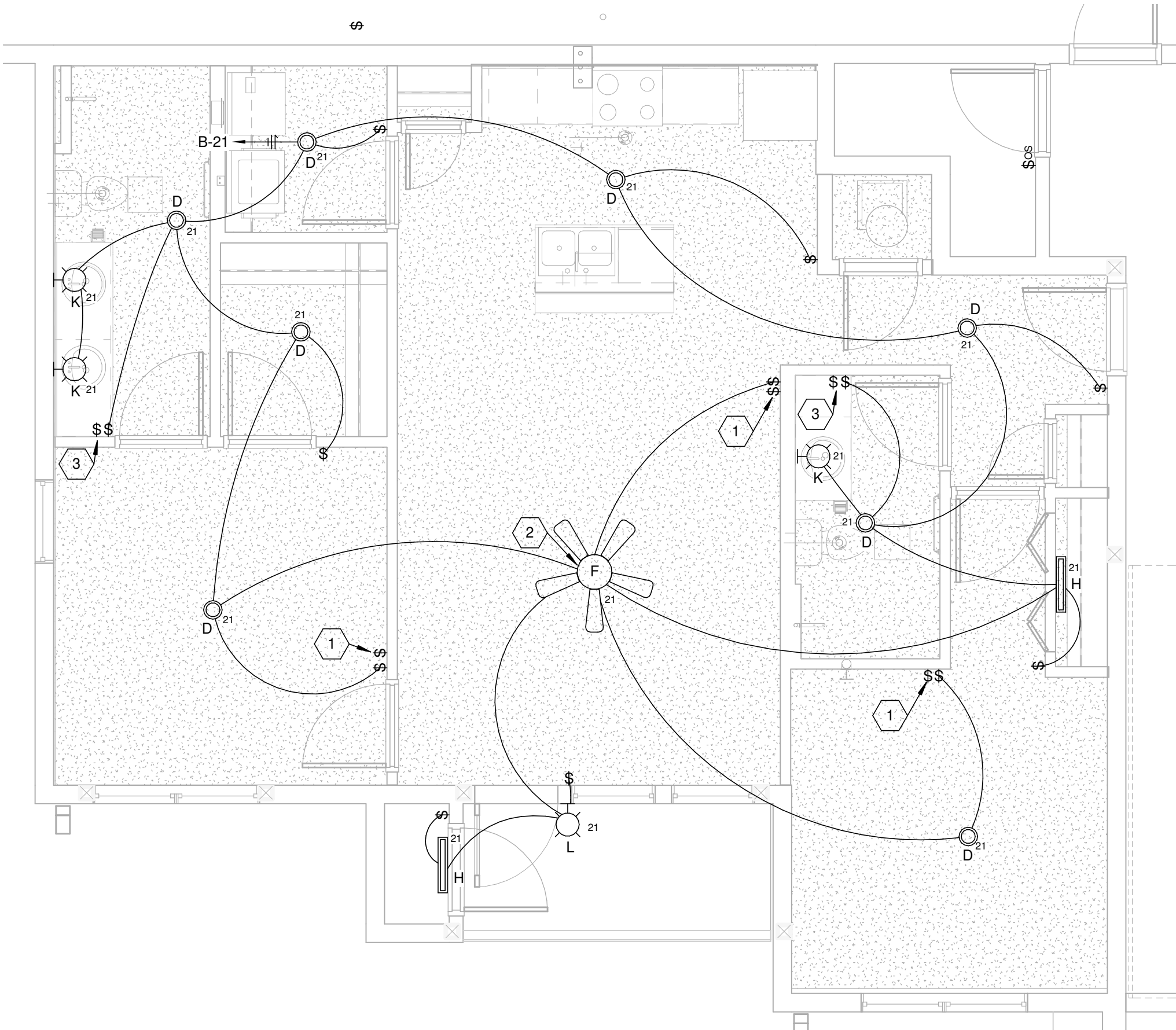


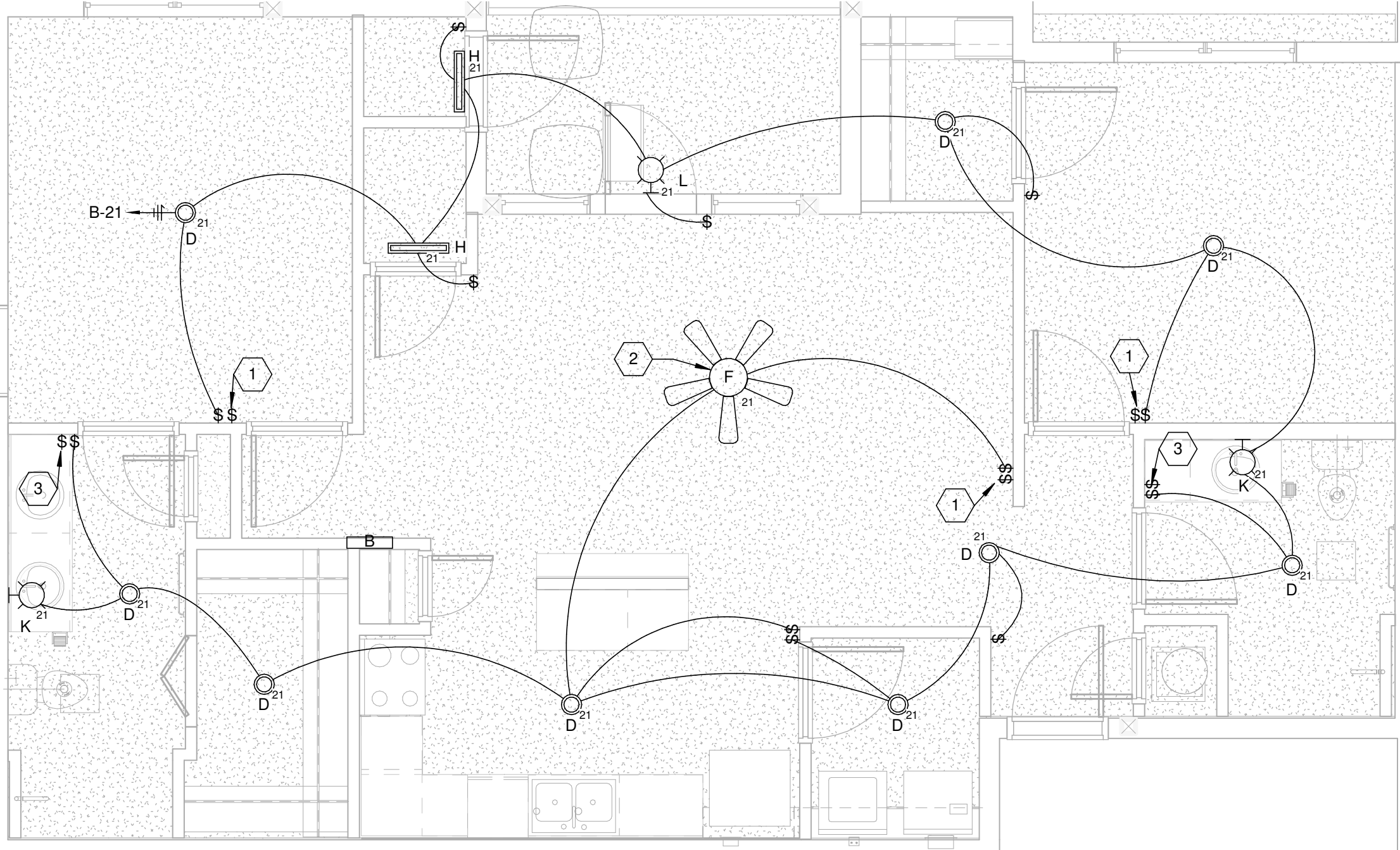
P:\04\Projects\2019\190809\_Winterhaven Apartments\05 Electrical\190809\_Electrical.rvt  
5/3/2019 3:58:24 PM



TYP. UNIT PLAN 2BR 2B - LIGHTING

SCALE: 1/4" = 1'-0"

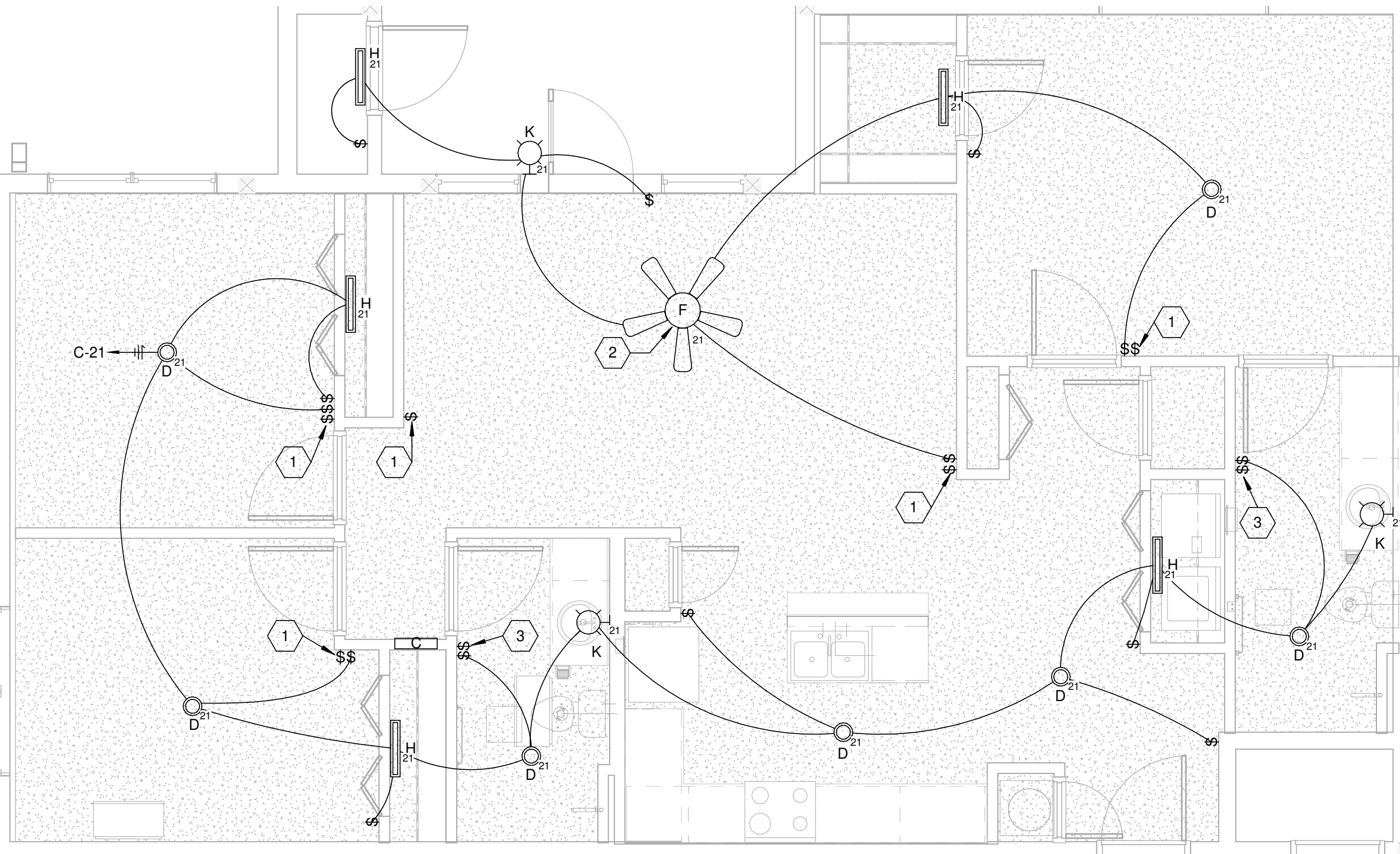
1



TYP. UNIT PLAN 2BR 3B - LIGHTING

SCALE: 1/4" = 1'-0"

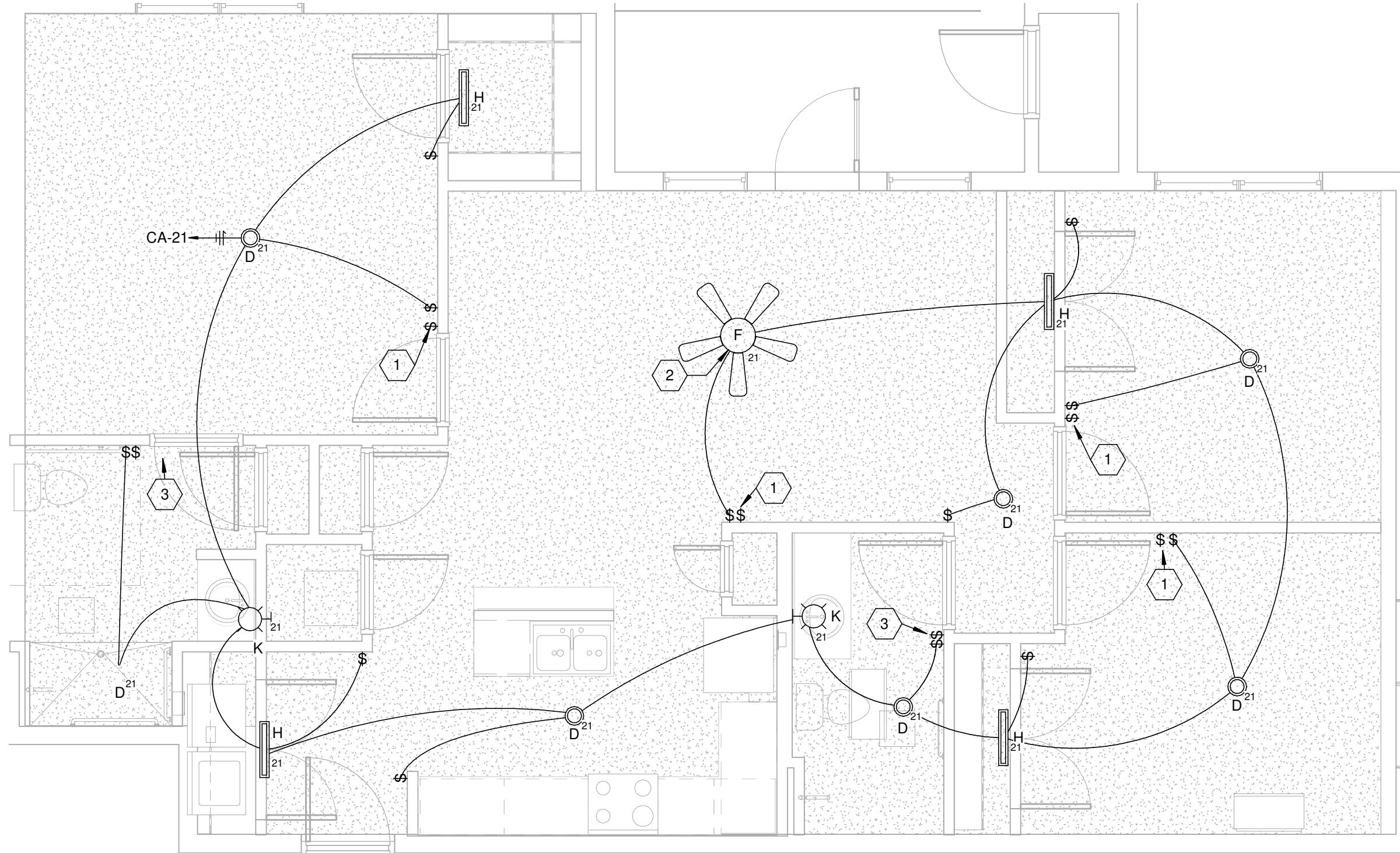
2



TYP. UNIT PLAN 3BR - LIGHTING

SCALE: 1/4" = 1'-0"

3



TYP. UNIT PLAN 3BR ADA - LIGHTING

SCALE: 1/4" = 1'-0"

4

## GENERAL SHEET NOTES

- SEE SHEET E001 FOR ELECTRICAL LEGEND AND GENERAL NOTES.
- IN DWELLING UNITS ALL 15A AND 20A, 120V BRANCH CIRCUITS (OTHER THAN AFCI TYPE) SHALL BE PROTECTED BY A LISTED AFCI DEVICE OF THE COMBINATION TYPE PER NEC 210.12. AND BE TAMPER RESISTANT PER NEC 406.11.
- SEE OVERALL BUILDING PLANS ON SHEETS E101 THROUGH E105 FOR INDIVIDUAL UNIT LAYOUT FOR EACH BUILDING TYPE.

## KEYED SHEET NOTES

- WALL SWITCH SHALL CONTROL THE BOTTOM HALF OF DESIGNATED RECEPTACLES IN SAME ROOM AS SWITCH. SEE CORRESPONDING POWER PLAN FOR RECEPTACLE LOCATIONS.
- PROVIDE ADEQUATE BRACING AND BACK BOX APPROVED FOR FAN/CHANDELIER USE. PROVIDE TWO SWITCHES FOR FAN/LIGHT COMBO. ONE SWITCH FOR FAN AND ONE SWITCH FOR LIGHT.
- PROVIDE SEPERATE SWITCH FOR BATHROOM EXHAUST FAN. SEE CORRESPONDING POWER PLAN FOR EXHAUST FAN CONNECTIONS

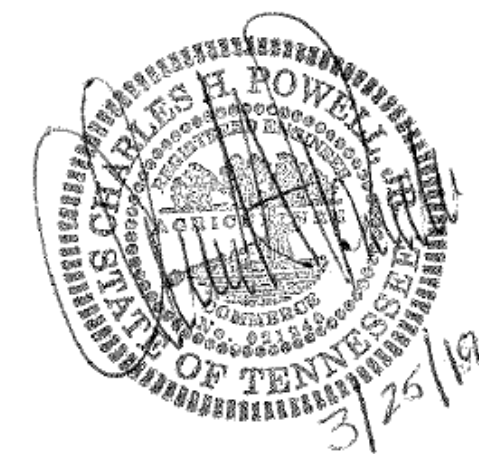
MBI

MBI COMPANIES INC.  
299 N. WEISGARBER ROAD  
KNOXVILLE, TN 37919  
PHONE: (865) 584-0999  
FAX: (865) 584-5213  
WEB: mbicompanies.com

ELECTRICAL ENGINEER:  
CHARLES H. POWELL JR.

MBI COMPANIES INC.  
299 N. WEISGARBER RD  
KNOXVILLE, TN 37919  
PHONE: (865) 584-0999  
FAX: (865) 584-5213  
WEB: mbicompanies.com

SEAL



COPYRIGHT © MBI COMPANIES INC. 2019  
THE DESIGN PROFESSIONAL DENIES ANY AND ALL RESPONSIBILITY AND LIABILITY FOR PROBLEMS WHICH ARISE FROM FAILURE TO FOLLOW THESE PLANS, SPECIFICATIONS AND THE DESIGN INTENT THEY CONVEY, OR PROBLEMS WHICH ARISE FROM OTHERS' FAILURE TO OBTAIN AND/OR FOLLOW THE DESIGN PROFESSIONAL'S GUIDANCE WITH RESPECT TO ANY ERRORS, OMISSIONS, INCONSISTENCIES, AMBIGUITIES OR CONFLICTS WHICH ARE ALLEGED.

## PROJECT INFORMATION

PROJECT:

WESTWOOD AT  
WINTER HAVEN

PROJECT ADDRESS:

xxxx Avenue G  
Winter Haven, FL 36901  
PROJECT NO.: 180888

## ACTIVE DESIGN PHASE

- ☐ FOR REVIEW ONLY  
☐ FOR PERMITTING ONLY  
☐ SCHEMATIC DESIGN  
☐ DESIGN DEVELOPMENT  
☐ CONSTRUCTION BIDDING  
☒ CONSTRUCTION DOCUMENTS  
☐ AS-BUILT RECORD SET

## REVISION INFORMATION

NO.	DATE	DESCRIPTION

## KEY PLAN

## SHEET INFORMATION

SHEET ISSUED: 3-25-19  
DESIGNED BY: WAH  
DRAWN BY: WAH  
REVIEWED BY: CHP  
SHEET TITLE:

TYPICAL UNIT PLANS -  
LIGHTING

SHEET NO.:

E202