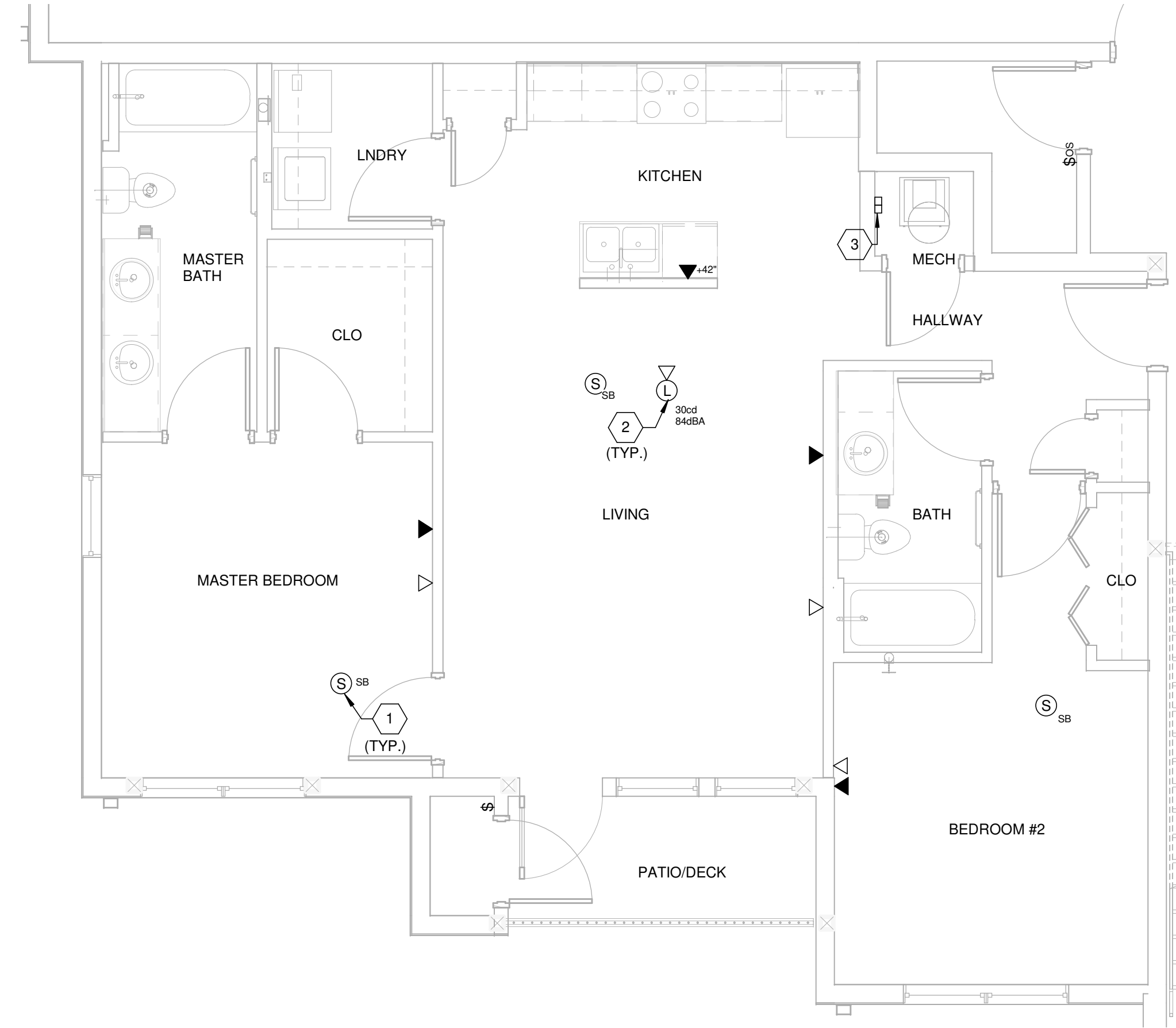


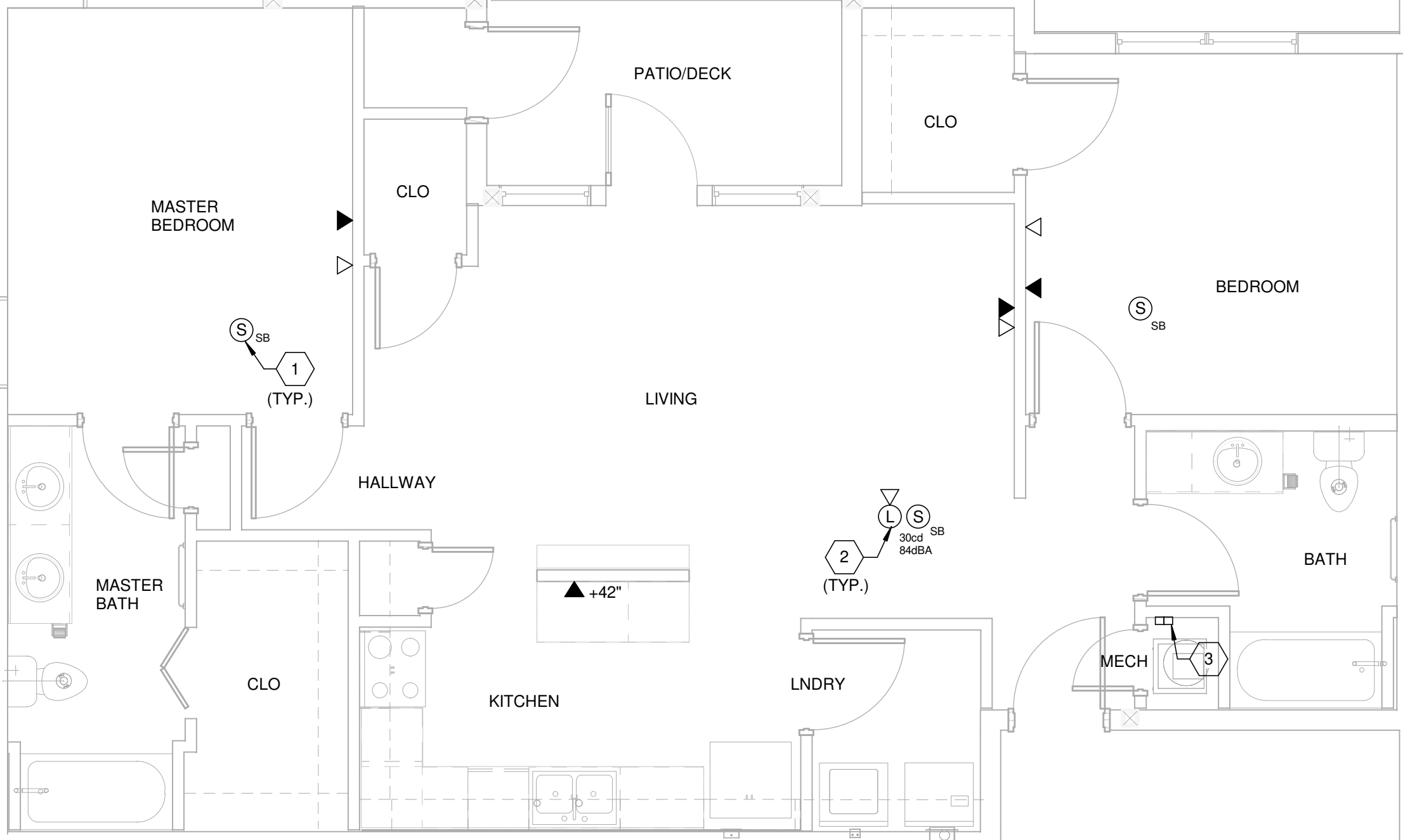
P:\Draws\Projects\161160888_Winterhaven Apartments\05 Electrical\160888_Electrical.rvt
5/3/2016 3:58:52 PM



TYP. UNIT PLAN 2BR 2B - COMM AND FIRE

SCALE: 1/4" = 1'-0"

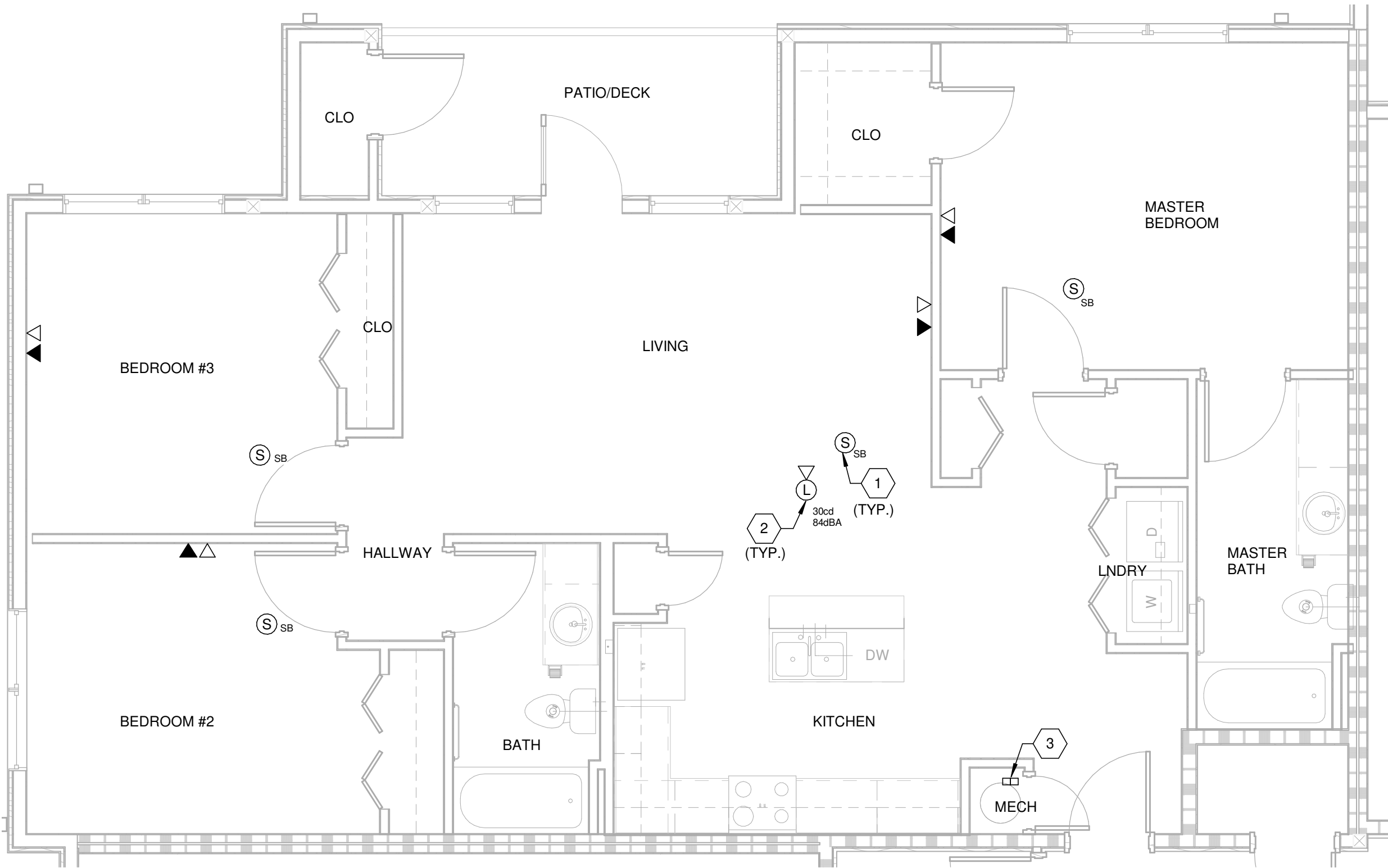
3



TYP. UNIT PLAN 2BR 3B - COMM AND FIRE

SCALE: 1/4" = 1'-0"

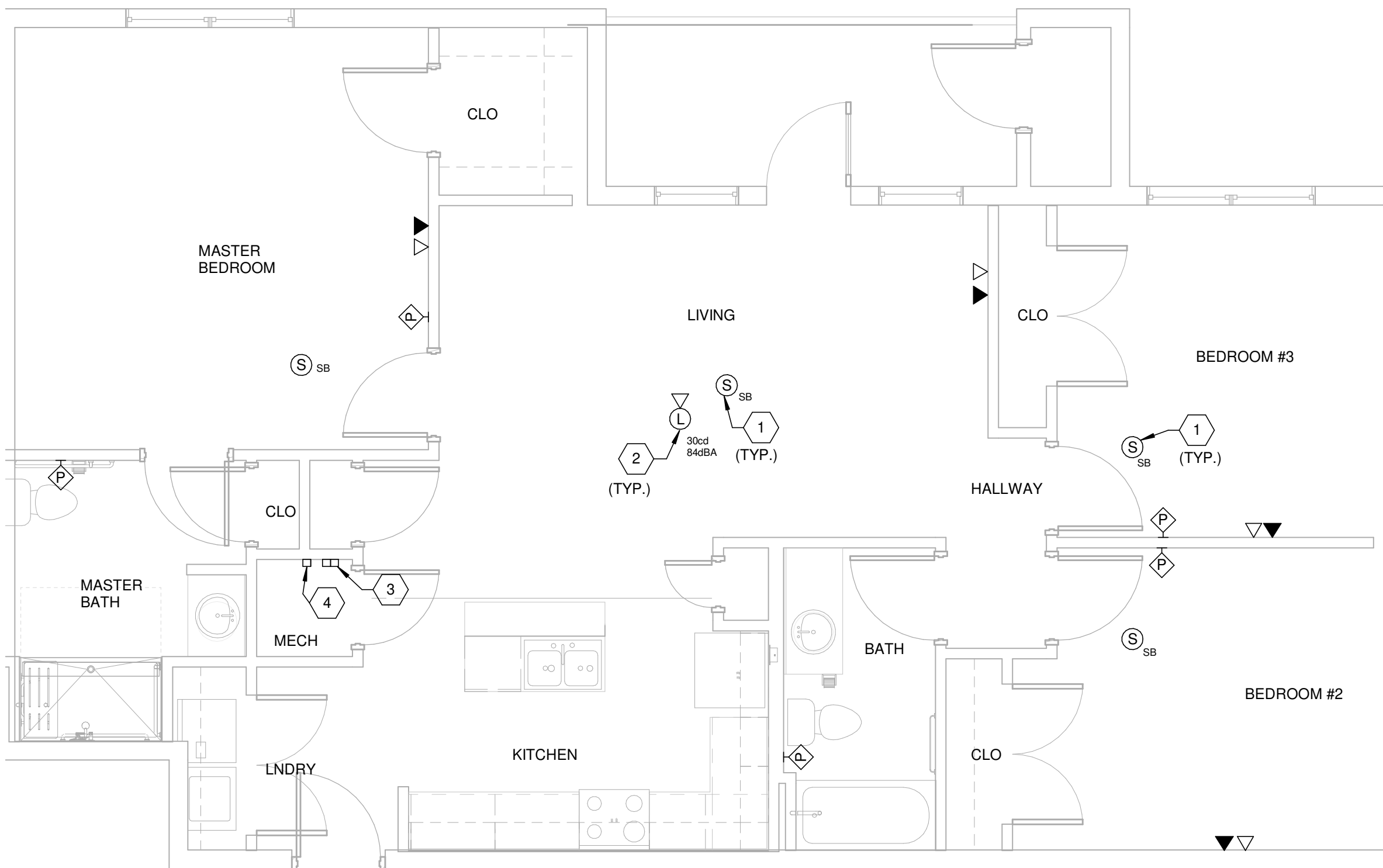
4



TYP. UNIT PLAN 3BR - COMM AND FIRE

SCALE: 1/4" = 1'-0"

1



TYP. UNIT PLAN 3BR ADA - COMM AND FIRE

SCALE: 1/4" = 1'-0"

2

GENERAL SHEET NOTES

- SEE SHEET E001 FOR ELECTRICAL LEGEND AND GENERAL NOTES.
- SEE OVERALL BUILDING PLANS ON SHEETS E101 THROUGH E105 FOR MAIN TELEPHONE AND CATV EQUIPMENT CABINET LOCATIONS. SEE CORRESPONDING BUILDING RISER DIAGRAM FOR ADDITIONAL INFORMATION.

KEYED SHEET NOTES

- SMOKE DETECTORS INSIDE APARTMENTS WITH AUDIBLE BASE (SOUNDER BASE) SHALL BE INTERCONNECTED WITH THE BUILDING FIRE ALARM CONTROL PANEL (FACP). A SEPARATELY CONTROLLED 'NAC' CIRCUIT VIA SIGNALING MODULE (AT CONTROL PANEL) SHOULD BE APPLIED TO EACH APARTMENT. THIS WILL ENABLE THE FACP TO OPERATE THE LIVING ROOM STROBE AND INITIATE ALARM AT THE SMOKE DETECTOR AUDIBLE BASES DURING A GENERAL BUILDING EVACUATION ALARM AS WELL AS DURING A LOCAL APARTMENT FIRE OR SMOKE EVENT. THE FACP WILL SEND A COMMAND TO ACTIVATE ONLY THE AUDIBLE BASES AND STROBE IN A GIVEN APARTMENT WHERE THE DETECTION WAS MADE (TANDEM OPERATION) AND WILL NOT GENERATE A GENERAL EVACUATION SIGNAL. IT IS IMPORTANT THAT THE PROGRAMMING FOR THE AUDIBLE BASE BE SET AT 'SUPERVISORY, NON-LATCHING' SO THAT THE SIGNALING COMMAND WILL STOP AS SOON AS THE SMOKE CLEARS FROM THE DEVICE.
- FIRE ALARM A/V DEVICE INSIDE AND OUTSIDE APARTMENTS ARE FOR BUILDING WIDE GENERAL EVACUATION SIGNAL. A/V DEVICE IN APARTMENT SHALL SIGNAL FOR BOTH A GENERAL BUILDING EVACUATION AND A FIRE/SMOKE DETECTION WITHIN THE APARTMENT. ALL FIRE DETECTION AND SIGNALING DEVICES SHALL BE TIED INTO THE BUILDING FACP. FACP AND DETECTION DEVICES SHALL PROGRAMMED TO ENABLE EACH APARTMENT TO OPERATE AS A STAND ALONE ENTITY WITH REGARDS TO SMOKE/FIRE DETECTION, CREATING AN ANNUNCIATION (AT THE FACP) OF THE APARTMENT INVOLVED, AND CAUSING AN ALARM SIGNAL AT THE DEVICES WITHIN ONLY THE APARTMENT WHERE DETECTION WAS MADE.
- TELEPHONE AND CATV TERMINATION/INTERFACE BOX. VERIFY EXACT LOCATION AND BOX TYPE WITH OWNER BEFORE ROUGH-IN.
- EMERGENCY CALL SYSTEM POWER AND CONTROL PANEL. CONNECT TO NEAREST RECEPTACLE CIRCUIT. INSTALL PANEL AND ALL ASSOCIATED EQUIPMENT AND CABLING PER MANUFACTURERS INSTRUCTIONS FOR A COMPLETE INSTALLATION OF EMERGENCY CALL SYSTEM. EDWARDS OR EQUAL.

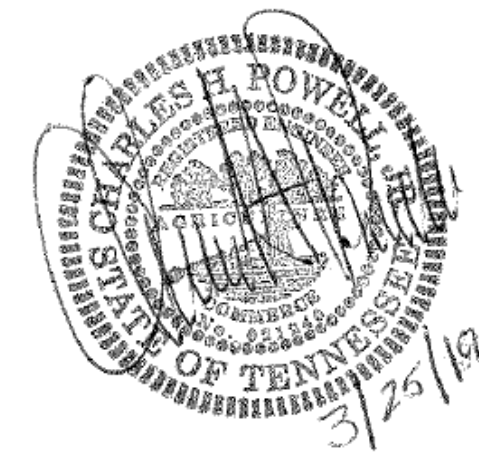
MBI

MBI COMPANIES INC.
299 N. WEISGARBER ROAD
KNOXVILLE, TN 37919
PHONE: (865) 584-0999
FAX: (865) 584-5213
WEB: mbicompanies.com

ELECTRICAL ENGINEER:
CHARLES H. POWELL JR.

MBI COMPANIES INC.
299 N. WEISGARBER RD
KNOXVILLE, TN 37919
PHONE: (865) 584-0999
FAX: (865) 584-5213
WEB: mbicompanies.com

SEAL



COPYRIGHT © MBI COMPANIES INC. 2019
THE DESIGN PROFESSIONAL DENIES ANY AND ALL RESPONSIBILITY AND LIABILITY FOR PROBLEMS WHICH ARISE FROM FAILURE TO FOLLOW THESE PLANS, SPECIFICATIONS AND THE DESIGN INTENT THEY CONVEY, OR PROBLEMS WHICH ARISE FROM OTHERS' FAILURE TO OBTAIN AND/OR FOLLOW THE DESIGN PROFESSIONAL'S GUIDANCE WITH RESPECT TO ANY ERRORS, OMISSIONS, INCONSISTENCIES, AMBIGUITIES OR CONFLICTS WHICH ARE ALLEGED.

PROJECT INFORMATION

PROJECT:

WESTWOOD AT
WINTER HAVEN

PROJECT ADDRESS:

xxxx Avenue G
Winter Haven, FL 36901

PROJECT NO.: 180888

ACTIVE DESIGN PHASE

- | | |
|-------------------------------------|------------------------|
| <input type="checkbox"/> | FOR REVIEW ONLY |
| <input type="checkbox"/> | FOR PERMITTING ONLY |
| <input type="checkbox"/> | SCHEMATIC DESIGN |
| <input type="checkbox"/> | DESIGN DEVELOPMENT |
| <input type="checkbox"/> | CONSTRUCTION BIDDING |
| <input checked="" type="checkbox"/> | CONSTRUCTION DOCUMENTS |
| <input type="checkbox"/> | AS-BUILT RECORD SET |

REVISION INFORMATION

NO.	DATE	DESCRIPTION

KEY PLAN

SHEET INFORMATION

SHEET ISSUED: 3-25-19
DESIGNED BY: WAH
DRAWN BY: WAH
REVIEWED BY: CHP
SHEET TITLE:

TYPICAL UNIT PLANS -
COMMUNICATION AND
FIRE ALARM

SHEET NO.:

E302